

## **Hinesburg Road, Huntington Road, and Kenyon Road Speed Study**

### **1. Introduction**

The Town of Richmond requested the Chittenden County Regional Planning Commission (CCRPC) staff to investigate and evaluate the posted speed limits on Hinesburg Road, Huntington Road, and Kenyon Road. In order for a legislative body to determine a safe and reasonable speed on town highways, a traffic engineering investigation (speed study) is required by the Vermont Statutes Annotated Title 23, § 1007. This document provides supporting findings that were used to develop recommendations for establishing speed limits on Hinesburg Road, Huntington Road, and Kenyon Road.

### **2. Existing Conditions**

#### **Hinesburg Road**

Hinesburg Road is a paved road classified by the state as a Class II Town Highway and functionally classified as a Major Collector. The study area for this road extends from the intersection of Huntington Road to the Hinesburg Townline. The CCRPC staff installed an Automatic Traffic Recorder (ATR) along Hinesburg Road at the location shown in Figure 1 to collect traffic volume and speed data. Data were collected between June 09, 2021 and June 17, 2021. Figure 1 shows the study area and ATR location.



**Figure 1: Hinesburg Road and ATR Location**

#### **Windshield Survey**

A windshield reconnaissance survey was conducted in both travel directions along Hinesburg Road by the team to identify safety related issues, roadway characteristics and roadside safety hazards. The following is a list of findings from the survey:

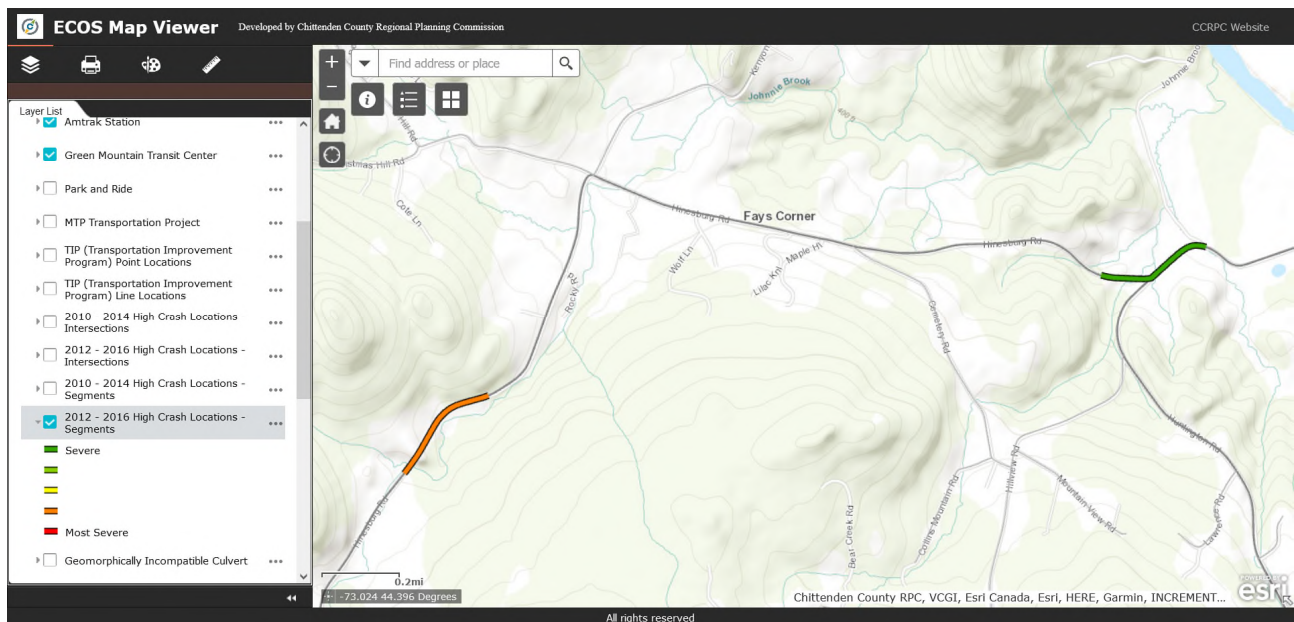
1. The study area section of the road is paved, and roadway width varies between 20 and 24 ft.
2. Very narrow asphalt/grass shoulders exist on both sides of travel lanes.
3. Shoulders are not marked along the road.
4. The posted speed limit is 45 mph.
5. The traffic at the intersection of Hinesburg Road, E Hill Road and Kenyon Road (Fays Corner) is controlled by STOP signs on E Hill Road (west approach) and Kenyon Road (north approach),

whereas Hinesburg Road has free movement for the northbound and westbound traffic. Traffic from the south and east approaches navigate a sharp 90-degree curve to continue to travel on Hinesburg Road.

6. A warning sharp curve sign supplemented with an advisory speed of 15 mph is posted on both south and east approaches.
7. Some driveways are obscured due to vegetation at some locations along the study area.
8. Significant embankment slope along an edge of the road at some locations in the study area.

**Crash History**

There were 46 crashes, including a fatal crash, reported in the last five years along Hinesburg Road. A crash report summary is attached in the Appendix. Most of the crashes were reported as single vehicle crashes with property damage only. Most common contributing circumstances for crashes were reported as distracted driving, driving too fast for conditions and failed to yield right of way. There are two high crash segments along Hinesburg Road: 1) at the intersection of Huntington Road and 2) south of Mansfield Way on a curve segment shown in the figure below.



**Figure 2: High Crash Segments along Hinesburg Road**

**Speed Data**

Traffic volume and speed data (attached in the Appendix) were collected using an ATR on Hinesburg Road from 06/09/2021 to 06/17/2021. Table 1 below shows a summary of speed data for Hinesburg Road.

**Table 1: Speed Data on Hinesburg Road**

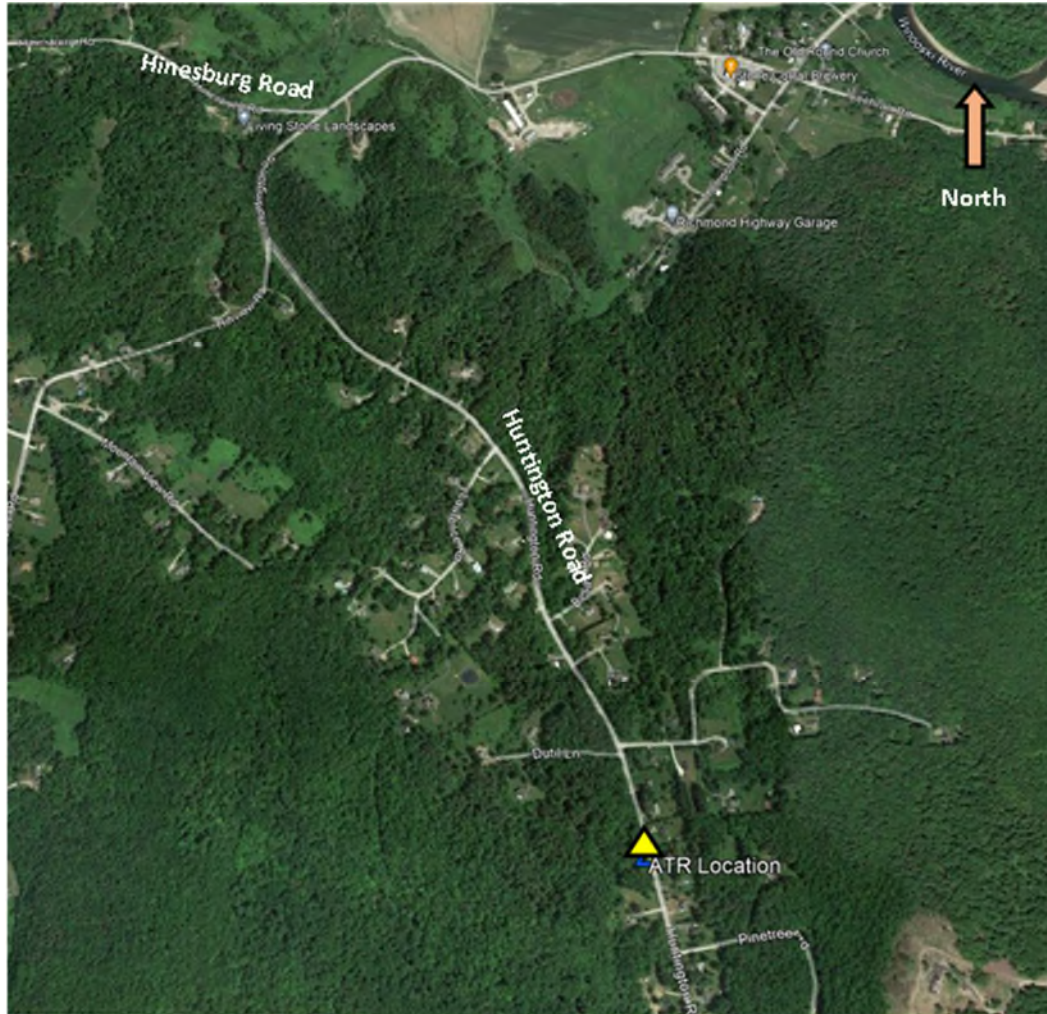
Speed Data	Eastbound	Westbound	Combined
Average Speed	44 mph	45 mph	44 mph
10 mph Pace Speed	40-49 mph	41-50 mph	41-50 mph
85 <sup>th</sup> Percentile Speed	53 mph	53 mph	53 mph

The 85<sup>th</sup> percentile speed for the eastbound and westbound directions was consistent at 53 mph, and therefore the combined 85<sup>th</sup> percentile speed associated with the traffic counts was 53 mph. The posted

speed limit is 45 mph. This indicates that a majority (85 percent) of drivers are driving at or below 53 mph (8 mph over the posted speed limit) along Hinesburg Road.

### **Huntington Road**

Huntington Road is a paved road classified by the state as a Class II Town Highway and functionally classified as a Major Collector. The study area for this road extends from the intersection of Hinesburg Road to the Huntington Townline. The CCRPC staff installed an Automatic Traffic Recorder (ATR) along Huntington Road at the location shown in Figure 3 to collect traffic volume and speed data. Data were collected between July 14, 2021 and July 21, 2021. Figure 3 shows the study area and ATR location.



**Figure 3: Huntington Road and ATR Location**

### **Windshield Survey**

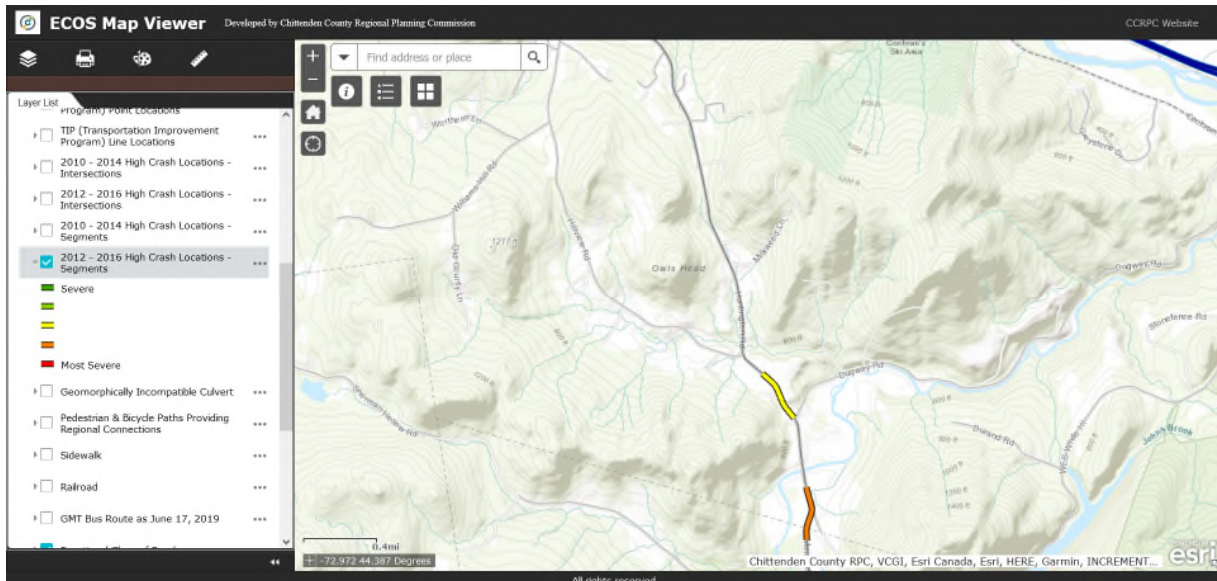
A windshield reconnaissance survey was conducted in both travel directions along the study area by the team to identify safety related issues, roadway characteristics and roadside safety hazards. The following is a list of findings from the survey:

1. The study area of the road section is paved, and the roadway width varies between 24 and 30 ft.
  2. Very narrow asphalt/grass shoulders exist on both sides of travel lanes.
  3. Shoulders are not marked along the road.
-

4. The posted speed limit is 40 mph between Hinesburg Road and Besaw Rd., and 45 mph between Besaw Rd. and the Townline.
5. As per the observed posted speed limit signs, the speed limit is not consistent for northbound and southbound traffic between Besaw Rd., and Dutil Ln. In other words, for about 1,000 feet, the southbound speed limit is 45 mph while the northbound speed limit is 40 mph.
6. Chevron signs along Huntington Road at the lower Hillview Road curve are too short and provide inadequate visibility, especially for northbound motorists.
7. Some driveways are obscured due to vegetation at some locations along the study area.
8. Mailboxes are located near the edge of pavement in some locations along the road.

**Crash History**

There were 34 crashes reported in the last five years along Huntington Road. A crash report summary is attached in Appendix. Most of the crashes were reported as a single vehicle crash and property damage only. The most common contributing circumstances for crashes were reported as failure to keep in proper lane and driving too fast for conditions. There were 12 injury crashes and two fatal (on 03/11/2019 at approximately 3912 Huntington Road, and 07/22/21 at approximately 1153 Huntington Road) in the last five years along Huntington Road. The investigation officers for both fatal crashes determined that alcohol or drug impairment and driving under influence, speed and lack of control appear to be contributing factors for the crashes. There are two high crash segments along Huntington Road: 1) a segment north of the Dugway Road intersection, and 2) north of the Huntington Town line shown in the figure below.



**Figure 4: High Crash Segments along Huntington Road**

**Speed Data**

Traffic volume and speed data (attached in the Appendix) were collected using an ATR on Huntington Road from 07/14/2021 to 07/21/2021. Table 2 shows a summary of speed data for Huntington Road.

**Table 2: Speed Data on Huntington Road**

Speed Data	Northbound	Southbound	Combined
Average Speed	45 mph	48 mph	46 mph
10 mph Pace Speed	40 - 49 mph	45 - 54 mph	40 - 49 mph
85 <sup>th</sup> Percentile Speed	49 mph	52 mph	51 mph

The 85<sup>th</sup> percentile speed for the northbound and southbound directions was observed as 49 mph and 52 mph, respectively, and the combined 85<sup>th</sup> percentile speed was observed as 51 mph, whereas the posted speed limit in the study area is 45 mph. This indicates that 85 percent of drivers are comfortable driving at speeds at or below 51 mph (6 mph over the posted speed limit) along Huntington Road.

### Curve Safety Assessment

A curve safety assessment was conducted on December 14, 2021, to determine advisory speed to travel horizontal curves at three locations along Huntington Road; Hillview Road, Dugway Road and Mayo Road, using a slope meter (ball-bank indicator). The following figure shows the study horizontal curves on Huntington Road.



**Figure 5: Horizontal Curves along Huntington Road**

Ball-bank indicator field testing is the most common and feasible method of determining a safe traveling speed at which a curve may be negotiated under average vehicle operation, roadway geometry, road surface and environmental conditions. During field testing, a ball-bank indicator was mounted on dashboard of the test vehicle and deflection angle of the solid ball in the device is recorded at different speeds along the three study curves in both travel directions to determine the safe traveling speed. Test runs were conducted maintaining 45, 40, and 35 mph traveling speed along the three horizontal curves and corresponding ball-bank indicator readings were recorded. The following Table 3 shows the ball-bank readings at the three horizontal curves at different operating speeds.

**Table 3: Ball-Bank Readings at Three Horizontal Curves on Huntington Road**

Curve No.	Existing Advisory Speed (mph)	Driving Direction	Recorded Ball Bank Reading									
			Speed (mph)									
			15	20	25	30	35	40	45	50	55	60
at Mayo Rd.	None	Northbound					12	16	20			
	None	Southbound					9	13	16			
at Dugway Rd.	None	Northbound					8	9	13			
	None	Southbound					7	8	11			
at Hillview Rd.	None	Northbound					12	15	20			
	None	Southbound					12	13	19			

The Manual on Uniform Traffic Control Devices (MUTCD) for streets and highways defines the standards and provides guidance to governing bodies, municipalities, road managers to install and maintain traffic control devices on all public roads, local streets, bikeways, and private roads open to public travel. Section 2C.08 of the MUTCD provides standards and guidance for installing an advisory speed plaque that can be used to supplement any warning sign to indicate the advisory speed for a condition. Table 4 shows the maximum ball-bank reading to be used for determining safe traveling speed for curves, as provided in Section 2C.08.

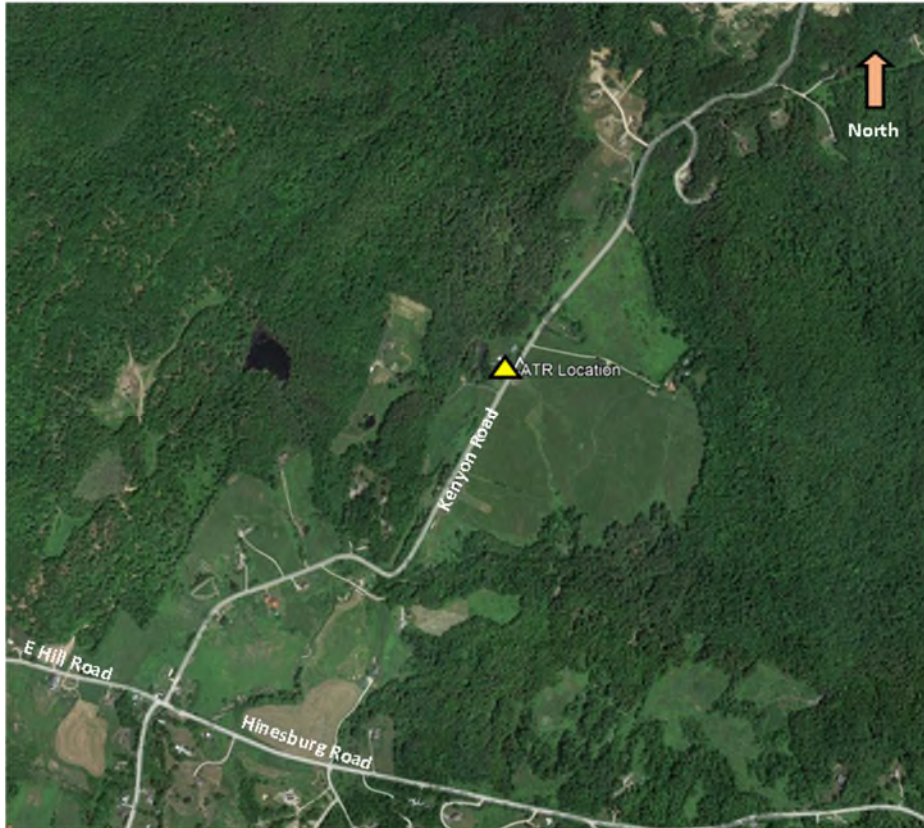
**Table 4: Maximum Ball-Bank Readings**

Speed Range	Maximum Ball-Bank Reading
<= 20 mph	16 <sup>o</sup>
25 – 30 mph	14 <sup>o</sup>
>= 35 mph	12 <sup>o</sup>

It is evident from the observed ball-banking readings that motorists are highly likely to experience discomfort while navigating these three curves along Huntington Road when traveling at or above 35 mph. Motorists may experience further discomfort and high potential of swaying away from travel lane in severe weather conditions such as in rain and snow conditions while navigating the three curves.

### **Kenyon Road**

Kenyon Road is an unpaved road classified by the state as a Class III Town Highway and functionally classified as a Local Road. The study area for this road extends from the intersection of US Route 2 to the intersection of Hinesburg Road. The CCRPC staff installed an Automatic Traffic Recorder (ATR) on Kenyon Road at the location shown in Figure 5 to collect traffic volume and speed data. Data were collected between June 17, 2021 and June 22, 2021. Figure 5 shows the study area and ATR location.



**Figure 6: Kenyon Road and ATR Location**

### Windshield Survey

A windshield reconnaissance survey was conducted in both travel directions along the road by the team to identify safety related issues, roadway characteristics and roadside safety hazards. The following is a list of findings from the survey:

1. The road surface is unpaved with its width varying between 20 and 24 ft.
2. Very narrow native gravel/grass shoulders exist on both sides of travel lanes.
3. The northern segment of road from US Route 2 to Sylvan Knoll Road is posted at 25 mph and the remaining segment to the intersection of Hinesburg is posted at 35 mph.
4. Sharp curve warning signs with advisory speed signs are installed along curved segments of the road.

### Crash History

There were 18 crashes reported in the last five years along Kenyon Road. A crash report summary is attached in Appendix. Most of the crashes were reported as single vehicle crashes and property damage only. Most common contributing circumstances for crashes were reported as failure to keep in proper lane and driving too fast for conditions.

### Speed Data

Traffic volume and speed data (attached in the Appendix) were collected using an ATR on Kenyon Road from 06/17/2021 to 06/22/2021. Table 5 shows a summary of speed data for Kenyon Road.

---

**Table 5: Speed Data on Kenyon Road**

<b>Speed Data</b>	<b>Northbound</b>	<b>Southbound</b>	<b>Combined</b>
Average Speed	33 mph	32 mph	32 mph
10 mph Pace Speed	28 - 37 mph	27 - 36 mph	27 - 36 mph
85 <sup>th</sup> Percentile Speed	40 mph	40 mph	40 mph

The 85<sup>th</sup> percentile speed for both the northbound and southbound direction was observed as 40 mph and the combined 85<sup>th</sup> percentile speed was also observed as 40 mph. This indicates that 85 percent of drivers are comfortable driving at speeds of 40 mph or less (5 mph over the posted speed limit) along Kenyon Road.

### **3. Speed Data Analysis**

A widely used metric in setting speed limits is the 85<sup>th</sup> percentile speed. This is defined as the speed in which 85% of motorists are traveling at or below. Based on the best available evidence and previous research, speed limits set using the 85<sup>th</sup> percentile speed data are not only acceptable by the majority of motorists, but also fall within the speed range where crash risk is lowest<sup>1</sup>. The Manual on Uniform Traffic Control Devices (MUTCD), which is adopted as the standard for all traffic control devices in Vermont (Title 23 V.S.A. Section 1025), recommends setting speed limits within 5 mph of the 85<sup>th</sup> percentile speed while taking into consideration other factors such as roadway characteristics, shoulder condition, grade, the 10 mph pace speed, land uses, development setbacks, parking, crash history, and bicycle/pedestrian activity.

A research study in Kansas found that a majority of motorists driving on gravel roads tend to judge their speed based on a variety of conditions, including road surface and width, weather, sight distance etc., instead of strictly complying with posted speed limits<sup>2</sup>. As per the Federal Highway Administration (FHWA) safety office, *“speeding issues on gravel roads will be best addressed through the use of a combination of engineering, enforcement and education countermeasures.”*

### **4. Pedestrian Activity and Other Factors**

As mentioned above, other factors should be considered in determining a safe and reasonable speed limit. Based on research work in other states, the prevailing speeds may be reduced by 5 percent when the total pedestrian traffic exceeds 10 people per hour for any three hours within any eight-hour period. Pedestrian volume data are not available for the study areas. However, anecdotal information from general field observation indicates that pedestrian volume in the study areas is unlikely to exceed 10 people per hour for any three hours in a day.

### **5. Findings and Recommendations**

In general, the Town should consider implementing site specific traffic calming measures such as radar speed feedback signs, dynamic pavement striping, gateway treatments etc., with a combination of countermeasures such as public outreach and education, safety awareness campaign and increasing enforcement targeted at changing driver behavior who are driving 10 mph above the speed limit on town highways.

---

<sup>1</sup> Synthesis of Speed Zoning Practice, FHWA-RD-85-096, Technical Summary.

<sup>2</sup> [https://safety.fhwa.dot.gov/local\\_rural/training/fhwasa010413spmgt/speedmanagementguide.pdf](https://safety.fhwa.dot.gov/local_rural/training/fhwasa010413spmgt/speedmanagementguide.pdf)



### **Hinesburg Road**

Hinesburg Road is paved and exhibits narrow shoulders with steep embankments along the edge of pavement at some locations. As per the observed bidirectional 85<sup>th</sup> percentile speed data, the majority of drivers are traveling at or below 53 mph on Hinesburg Road within the study area.

Despite the observed 85<sup>th</sup> percentile speeds, when considering the roadway characteristics and lack of shoulders and steep embankment slopes, rural residential land use, and high number of crashes with high crash segments, **it is recommended to lower the speed limit to 40 mph on Hinesburg Road from the intersection of Huntington Road to approximately 0.5 miles south of Mansfield Way.** It is also recommended to strip an edge line along Hinesburg Road maintaining at least 10 ft travel lane width in both directions.

### **Huntington Road**

Huntington Road is paved and exhibits narrow shoulders with steep embankments along the edge of the roadway at certain locations within the study area. As per the observed bidirectional 85<sup>th</sup> percentile speed data, a majority of drivers are traveling at or below 52 mph on Huntington Road.

Despite the observed 85<sup>th</sup> percentile speeds, when considering roadway characteristics and lack of shoulders and steep embankment slopes, rural residential land use, and high number of crashes with high crash segments, **it is recommended to extend the 40 mph speed limit zone southward to approximately 0.3 miles north of the Dugway Road intersection.**

The following are additional recommendations based on field observations and ball-banking data analysis:

- Install curve sign supplemented with 35 mph advisory speed plaque along curves in both directions on Huntington Road at Mayo Road and Dugway Road locations. (see Figure 5 for location reference)
- Install an additional chevron sign along the east side of the curve section at Mayo Road.
- Increase the height of chevron signs along the curve section at lower Hillview Road so that the bottom of the signs are 5 ft above the edge of pavement.
- Install a fog line/edge line maintaining at least 10 ft travel lane width in both directions.

### **Kenyon Road**

Kenyon Road is an unpaved road with narrow shoulders. Generally, most motorists tend to drive at speeds lower than the posted speed limit on unpaved/gravel roads. Therefore, the Vermont Agency of Transportation (VTTrans) does not recommend setting speed limits for Class III unpaved roads<sup>3</sup>.

Warning chevron signs and advisory speed signs were installed at appropriate locations along the road. By clearing or trimming vegetation along narrow curves and in the vicinity of driveway approaches, sight distance and safety for all users will be improved.

With the observed 85<sup>th</sup> percentile speeds and considering the roadway characteristics and narrow shoulders, rural residential land use, and lack of significant pedestrian and bicycle activities, **it is recommended to maintain the existing speed limits on Kenyon Road.**

---

<sup>3</sup><https://localroads.vermont.gov/sites/localroads/files/files/resources/materials/SettingSpeedLimitsGuideUpdateAugust2016.pdf>

---

**Table 6: Technical Summary**

Municipality:	Town of Richmond
Road Name:	Hinesburg Road, Huntington Road and Kenyon Road
Recommended Speed Limit:	<ul style="list-style-type: none"> <li>• <b>40 mph for Hinesburg Rd. between Huntington Road and 0.5 miles south of Mansfield Way</b></li> <li>• <b>Extend 40 mph zone on Huntington Road southward approximately 0.3 miles north of the Dugway Road intersection</b></li> <li>• <b>Maintain 35 mph for Kenyon Road</b></li> </ul>
Evaluation By:	Sai Sarepalli, P.E. Senior Transportation Planning Engineer
Final Report Document Date:	<b>02/07/2022</b>

85th Percentile Speed (mph):	<b>Hinesburg Road:</b> EB – 53 mph; WB – 53 mph <b>Huntington Road:</b> NB – 49 mph; SB – 52 mph <b>Kenyon Road:</b> NB – 40 mph; SB – 40 mph
10 mph Pace Speed (mph) & Percentage in the range	<b>Hinesburg Road:</b> EB (40-49mph, 64%); WB (41-50 mph, 67%) <b>Huntington Road:</b> NB (40-49mph, 74%); SB (45-54mph, 65%) <b>Kenyon Road:</b> NB (28-37mph, 64%); SB (27-36 mph, 69%)
Safety problem related to speed:	<ul style="list-style-type: none"> <li>• Motorists driving at excessive speeds along curves can pose safety hazard.</li> <li>• Driveways obscured due to vegetation can pose safety hazard for drivers.</li> </ul>
Average Daily Traffic (Vehicles per Day)	<b>Hinesburg Road:</b> 2,000 <b>Huntington Road:</b> 2,485 <b>Kenyon Road:</b> 750
Town Highway and Functional Classification for both roads	<b>Hinesburg Road:</b> Class II and Major Collector <b>Huntington Road:</b> Class II and Major Collector <b>Kenyon Road:</b> Class III and Local Road
Road Surface	Hinesburg Rd and Huntington Rd: Paved/Asphalt Kenyon Road: Unpaved/Gravel
Road Width	Varies between 18 and 20 ft. No Pavement Markings
Shoulder Surface	Hinesburg Rd and Huntington Rd: Asphalt/Gravel Kenyon Road: Grass/Gravel
Shoulder Width	Hinesburg Rd and Huntington Rd: 0.5 ft to 2 ft Kenyon Road: 0 ft to 1 ft
Parking	No Parking on all study roads
Pedestrian/Bicycles	No marked bike lanes on all study roads
Adjacent Land use	Rural Residential

**Appendix**

**Crash Data**

---

**Hinesburg Road**  
Crash Data  
01/01/2016 - 08/31/2021

Route	Reporting Agency/Incident No.	City/Town	Route	Mile Marker	Crash Date	Time	Weather	Contributing Circumstances	Direction Of Collision	Number of Injuries	Number of Fatalities	Number of Untimely Deaths	Direction	Crash Severity
FAS 0209	VT0040800/17RM01154	Richmond	Hinesburg Rd	0.4	11/11/2017	1:53 PM	Clear	No improper driving	Single Vehicle Crash	0	0	0	N	None
FAS 0209	VT0040800/17RM00111	Richmond	Hinesburg Rd	0.57	2/3/2017	8:24 PM	Snow	Driving too fast for conditions- Not Distracted	Single Vehicle Crash	0	0	0	S	None
FAS 0209	VT0040800/16RM01231	Richmond	Hinesburg Rd	1.03	11/19/2016	10:29 AM	Clear	Driving too fast for conditions- Other Inside Vehicle	Single Vehicle Crash	1	0	0	S	Suspected Minor
FAS 0209	VT0040800/16RM00228	Richmond	Hinesburg Rd	1.6	3/7/2016	10:34 AM	Snow	Driving too fast for conditions	Single Vehicle Crash	0	0	0	S	None
FAS 0209	VT0040800/17RM00228	Richmond	Hinesburg Rd	1.72	3/9/2017	7:00 AM	Snow	Driving too fast for conditions	Single Vehicle Crash	0	0	0	N	None
FAS 0209	VT0040800/19RM00402	Richmond	Hinesburg Rd	1.72	6/17/2019	7:35 AM	[No Weather]		[No Direction of Collision]	0	0	0	N	None
FAS 0209	VT0040800/17RM00271	Richmond	Hinesburg Rd	2	3/22/2017	11:28 AM	Cloudy	Driving too fast for conditions	Single Vehicle Crash	0	0	0	N	None
FAS 0209	VT0040800/16RM00555	Richmond	Hinesburg Rd	2.3	5/29/2016	3:50 PM	Rain	Under the influence of medication/drugs/alcohol	Single Vehicle Crash	0	0	0	E	None
FAS 0209	VT0040800/20RM00035	Richmond	Hinesburg Rd	2.41	1/19/2020	7:40 PM	[No Weather]		[No Direction of Collision]	0	0	0		[No Data]
FAS 0209	VTVSP0100/18A102971	Richmond	Hinesburg Rd	2.53	6/29/2018	8:11 PM	Clear		Single Vehicle Crash	0	0	0	W	None
FAS 0209	VTVSP0100/21A102454	Richmond	Hinesburg Rd	2.69	7/2/2021	5:45 AM	Rain	Fatigued- asleep	Single Vehicle Crash	0	0	0	W	None
FAS 0209	VT0040800/16RM01257	Richmond	Hinesburg Rd	3.28	11/24/2016	11:15 AM	Snow	Driving too fast for conditions	Single Vehicle Crash	0	0	0	E	None
FAS 0209	VT0040800/18RM00816	Richmond	Hinesburg Rd	3.6	8/28/2018	7:18 AM	Clear	Inattention	Single Vehicle Crash	0	0	0	W	None
FAS 0209	VT0040800/21RM00095	Richmond	Hinesburg Rd	3.65	3/29/2021	4:02 PM	Clear	Followed too closely- Operating vehicle in erratic- reckless	Rear End	0	0	0	E	None
FAS 0209	VT0040800/17RM01230	Richmond	Hinesburg Rd	3.8	12/4/2017	2:53 PM	Clear	Other improper action- No improper driving	Other - Explain in Narrative	0	0	0	W- E	None
FAS 0209	VT0040800/19RM00577	Richmond	Hinesburg Rd	3.9	8/23/2019	11:05 AM	[No Weather]		[No Direction of Collision]	0	0	0	W	None
FAS 0209	VT0040800/17RM00765	Richmond	Hinesburg Rd	3.91	7/26/2017	12:35 PM	Clear	Unknown	Single Vehicle Crash	0	0	0	S	None
FAS 0209	VT0041000/19RM00786	Richmond	Hinesburg Rd	3.92	11/11/2019	6:49 PM	[No Weather]		[No Direction of Collision]	0	0	0	E- W	None
FAS 0209	VT0040800/17RM00171	Richmond	Hinesburg Rd	3.94	2/20/2017	9:22 AM	Clear	No improper driving	Single Vehicle Crash	0	0	0	S	None
FAS 0209	VT0040800/16RM01302	Richmond	Hinesburg Rd	3.99	12/8/2016	10:17 AM	Cloudy	Under the influence of medication/drugs/alcohol- Driving	Single Vehicle Crash	0	0	0	S	None
FAS 0209	VTVSP0100/20A100230	Richmond	Hinesburg Rd	4.16	1/16/2020	7:40 AM	Snow	Driving too fast for conditions- No improper driving	Opp Direction Sideswipe	0	0	0	S- N	None
FAS 0209	VT0040800/17RM00938	Richmond	Hinesburg Rd	4.17	9/25/2017	7:45 PM	Clear	Exceeded authorized speed limit- Operating vehicle in err	Single Vehicle Crash	1	0	0	W	Suspected Serious
FAS 0209	VT0040800/18RM01050	Richmond	Hinesburg Rd	4.27	11/20/2018	4:14 AM	Snow	No improper driving	Single Vehicle Crash	0	0	0	W	None
FAS 0209	VT0040800/16RM01307	Richmond	Hinesburg Rd	4.37	12/9/2016	6:52 PM	Snow	No improper driving- Not Distracted	Single Vehicle Crash	0	0	0	E	None
FAS 0209	VT0040800/19RM00230	Richmond	Hinesburg Rd	4.46	3/27/2019	7:44 AM	Clear	Followed too closely- No improper driving	Rear End	0	0	0	E	None
FAS 0209	VT0040800/17RM00027	Richmond	Hinesburg Rd	4.51	1/8/2017	2:25 AM	Clear	Under the influence of medication/drugs/alcohol	Single Vehicle Crash	0	0	0	S	None
FAS 0209	VT0040800/20RM00080	Richmond	Hinesburg Rd	4.58	2/12/2020	2:12 PM	Clear	Failed to yield right of way- No improper driving	Left Turn and Thru- Angle Broadside -->v--	1	0	0	W- N	Possible
FAS 0209	VT0040800/16RM01077	Richmond	Hinesburg Rd	4.6	9/30/2016	5:27 PM	Cloudy	Disregarded traffic signs- signals- markings- Not Distracted	Opp Direction Sideswipe	0	0	0	N- S	None
FAS 0209	VT0040800/18RM00216	Richmond	Hinesburg Rd	4.87	3/8/2018	8:41 AM	Snow	Disregarded traffic signs- signals- markings	Single Vehicle Crash	0	0	0	S	None
FAS 0209	VT0040800/19RM00382	Richmond	Hinesburg Rd	4.93	6/3/2019	11:11 AM	[No Weather]		[No Direction of Collision]	0	0	0		[No Data]
FAS 0209	VT0040800/19RM00611	Richmond	Hinesburg Rd	4.93	9/4/2019	4:19 PM	[No Weather]		[No Direction of Collision]	0	0	0		[No Data]
FAS 0209	VT0040800/19RM00687	Richmond	Hinesburg Rd	4.97	10/3/2019	7:24 PM	Rain	No improper driving- Not Distracted	Single Vehicle Crash	0	1	0	N	Fatality
FAS 0209	VT0040800/19RM00569	Richmond	Hinesburg Rd	5.02	8/19/2019	1:03 PM	[No Weather]		[No Direction of Collision]	0	0	0	S	None
FAS 0209	VT0040800/17RM01137	Richmond	Hinesburg Rd	5.08	11/7/2017	7:28 AM	Clear	Followed too closely	Rear End	1	0	0	N	Suspected Minor
FAS 0209	VT0040800/17RM00947	Richmond	Hinesburg Rd	5.09	9/14/2017	3:30 PM	Cloudy	Inattention- No improper driving	Other - Explain in Narrative	0	0	0	S- W	None
FAS 0209	VT0040800/20RM00580	Richmond	Hinesburg Rd	5.13	12/16/2020	4:35 PM	Clear	Inattention	Rear-to-rear	0	0	0	E- P	None
FAS 0209	VT0040800/17RM00327	Richmond	Hinesburg Rd	5.14	4/7/2017	11:23 AM	Other - Ex	Failed to yield right of way- No improper driving	Left Turn and Thru- Angle Broadside -->v--	0	0	0	N- S	None
FAS 0209	VT0040800/18RM00468	Richmond	Hinesburg Rd	5.15	5/15/2018	8:41 AM	Rain	Inattention- No improper driving	No Turns- Thru moves only- Broadside ^<	0	0	0	E	None
FAS 0209	VT0040800/16RM00615	Richmond	Hinesburg Rd	5.8	6/13/2016	11:07 AM	Clear	Failure to keep in proper lane	Single Vehicle Crash	0	0	0	S	None
FAS 0209	VT0040800/21RM00027	Richmond	Hinesburg Rd	5.82	1/21/2021	3:40 PM	Snow	Failure to keep in proper lane- No improper driving	Opp Direction Sideswipe	0	0	0	W- E	None
FAS 0209	VT0040800/17RM00168	Richmond	Hinesburg Rd	6.44	2/17/2017	8:15 AM	Cloudy	Driving too fast for conditions	Single Vehicle Crash	0	0	0	N	None
FAS 0209	VT0040800/19RM00131	Richmond	Hinesburg Rd	6.44	2/10/2019	8:19 PM	Clear	No improper driving	Same Direction Sideswipe	0	0	0	S	None
FAS 0209	VT0040800/18RM00299	Richmond	Hinesburg Rd	6.91	3/28/2018	5:21 PM	Clear	No improper driving- Followed too closely- Not Distracted	Rear End	0	0	0	S	None
FAS 0209	VT0040800/18RM00555	Richmond	Hinesburg Rd	7.29	6/5/2018	8:01 AM	Cloudy	Followed too closely	Rear End	0	0	0	N	None
FAS 0209	VT0040800/16RM01101	Richmond	Hinesburg Rd	7.42	10/7/2016	7:13 AM	Clear	Failure to keep in proper lane- Inattention	Single Vehicle Crash	0	0	0	N	None
FAS 0209	VT0040800/19RM00771	Richmond	Hinesburg Rd	999.99	11/7/2019	3:17 PM	[No Weather]		[No Direction of Collision]	0	0	0		[No Data]

### Huntington Road

Crash Data

01/01/2016 - 08/31/2021

Route	Reporting Agency/Incident No.	City/Town	Route	Mile Marker	Crash Date	Time	Weather	Contributing Circumstances	Direction Of Collision	Number of Injuries	Number of Fatalities	Number of Untimely Deaths	Direction	Crash Severity
FAS 0211	VT0040800/17RM00557	Richmond	Huntington Rd	0.18	6/12/2017	4:50 PM	Clear	Exceeded authorized speed limit	Single Vehicle Crash	0	0	0	N	None
FAS 0211	VT0040800/17RM000951	Richmond	Huntington Rd	0.18	9/16/2017	2:09 PM	Clear	Inattention	Single Vehicle Crash	1	0	0	N	Suspected Minor
FAS 0211	VT0040800/18RM00954	Richmond	Huntington Rd	0.18	10/19/2018	12:37 PM	Clear	Driving too fast for conditions	Single Vehicle Crash	0	0	0	N	None
FAS 0211	VT0040800/19RM00193	Richmond	Huntington Rd	0.18	3/11/2019	6:21 PM	Cloudy	Exceeded authorized speed limit- Operating vehicle in erratic- reckless- careless	Single Vehicle Crash	0	1	0	S	Fatality
FAS 0211	VT0040800/17RM01236	Richmond	Huntington Rd	0.34	12/7/2017	2:21 PM	Clear	Unknown	Single Vehicle Crash	1	0	0	S	Possible
FAS 0211	VT0040800/17RM00471	Richmond	Huntington Rd	0.43	5/19/2017	5:45 AM	Clear	Failure to keep in proper lane	Single Vehicle Crash	0	0	0	N	None
FAS 0211	VTVSP0100/21A103205	Richmond	Huntington Rd	0.59	8/29/2021	11:06 PM	Clear	No improper driving- Fatigued- asleep	Head On	0	0	0	S	Unknown
FAS 0211	VT0040800/18RM01073	Richmond	Huntington Rd	0.61	11/27/2018	8:29 AM	Snow	Driving too fast for conditions	Single Vehicle Crash	0	0	0	W	None
FAS 0211	VT0040800/18RM00488	Richmond	Huntington Rd	0.64	5/19/2018	11:58 AM	Cloudy	Other improper action- Followed too closely	Rear End	0	0	0	S	None
FAS 0211	VTVSP0100/18A104867	Richmond	Huntington Rd	0.69	10/28/2018	8:12 PM	Clear	Driving too fast for conditions	[No Direction of Collision]	0	0	0	S	None
FAS 0211	VT0040800/16RM00434	Richmond	Huntington Rd	0.73	4/29/2016	7:28 PM	Clear	No improper driving	Single Vehicle Crash	0	0	0	S	None
FAS 0211	VT0040800/17RM01228	Richmond	Huntington Rd	0.73	12/4/2017	7:47 AM	Clear	Driving too fast for conditions	Single Vehicle Crash	0	0	0	N	None
FAS 0211	VT0040800/16RM00215	Richmond	Huntington Rd	0.82	3/2/2016	4:01 PM	Cloudy	Failure to keep in proper lane- Other Inside Vehicle	Single Vehicle Crash	0	0	0	N	None
FAS 0211	VT0040800/19RM00377	Richmond	Huntington Rd	0.83	5/30/2019	4:27 PM	[No Weather]		[No Direction of Collision]	0	0	0	S	None
FAS 0211	VT0040800/19RM00549	Richmond	Huntington Rd	1.2	8/9/2019	11:35 AM	Clear	Other Activity- Electronic Device	Single Vehicle Crash	0	0	0	S	None
FAS 0211	VT0040800/16RM00867	Richmond	Huntington Rd	1.4	8/6/2016	8:02 AM	Clear	Fatigued- asleep	Single Vehicle Crash	1	0	0	S	Suspected Minor
FAS 0211	VT0040800/20RM00031	Richmond	Huntington Rd	1.46	1/17/2020	6:50 PM	Clear	No improper driving	Single Vehicle Crash	0	0	0	N	[No Data]
FAS 0211	VT0040800/16RM00204	Richmond	Huntington Rd	1.8	2/27/2016	2:58 AM	Cloudy	Under the influence of medication/drugs/alcohol- Operating vehicle in erratic- r	Single Vehicle Crash	1	0	0	S	Suspected Minor
FAS 0211	VT0040800/17RM00944	Richmond	Huntington Rd	2.19	9/14/2017	5:37 AM	Cloudy	Failure to keep in proper lane	Single Vehicle Crash	0	0	0	N	None
FAS 0211	VTVSP0100/18A203989	Richmond	Huntington Rd	2.31	8/11/2018	7:43 PM	Cloudy	Failure to keep in proper lane	Single Vehicle Crash	1	0	0	N	Possible
FAS 0211	VT0040800/17RM00659	Richmond	Huntington Rd	2.51	7/2/2017	9:36 AM	Cloudy	Under the influence of medication/drugs/alcohol	Single Vehicle Crash	1	0	0	S	Suspected Minor
FAS 0211	VT0040800/17RM00123	Richmond	Huntington Rd	2.59	2/7/2017	8:12 AM	Snow	Driving too fast for conditions	Single Vehicle Crash	0	0	0	S	None
FAS 0211	VT0040800/19RM00221	Richmond	Huntington Rd	2.61	3/22/2019	11:10 AM	Snow	Driving too fast for conditions- No improper driving	Head On	2	0	0	N- S	Suspected Serious
FAS 0211	VT0040800/19RM00849	Richmond	Huntington Rd	2.61	12/7/2019	10:34 AM	[No Weather]		[No Direction of Collision]	0	0	0	N- S	None
FAS 0211	VT0040800/18RM00113	Richmond	Huntington Rd	2.74	2/3/2018	3:27 AM	Cloudy	Under the influence of medication/drugs/alcohol- Not Distracted	Single Vehicle Crash	1	0	0	S	Suspected Serious
FAS 0211	VT0040800/17RM00013	Richmond	Huntington Rd	2.81	1/4/2017	6:20 AM	Snow		Single Vehicle Crash	0	0	0	S	None
FAS 0211	VT0040800/18RM00449	Richmond	Huntington Rd	2.87	5/9/2018	8:35 AM	Clear	Fatigued- asleep- Failure to keep in proper lane- No improper driving	Head On	3	0	0	S- N	Suspected Serious
FAS 0211	VT0040800/18RM00347	Richmond	Huntington Rd	2.91	4/12/2018	5:21 PM	Rain	No improper driving	Opp Direction Sideswipe	0	0	0	N- S	None
FAS 0211	VTVSP0100/21A102730	Richmond	Huntington Rd	3	7/22/2021	12:17 AM	Not Report	Exceeded authorized speed limit- Operating vehicle in erratic- reckless- careless	Single Vehicle Crash	0	1	0	S	Fatality
FAS 0211	VT0040800/18RM00859	Richmond	Huntington Rd	3.22	9/8/2018	3:07 PM	Clear	Driving too fast for conditions	Single Vehicle Crash	1	0	0	S	Possible
FAS 0211	VT0041000/19WT00486	Richmond	Huntington Rd	3.41	2/3/2019	8:27 PM	Sleet- Hail	Swerving or avoiding due to wind- slippery surface- vehicle- object- non-motoris	Head On	3	0	0	N- S	Suspected Minor
FAS 0211	VTVSP0100/19A100368	Richmond	Huntington Rd	3.47	1/21/2019	6:31 PM	Snow	Driving too fast for conditions- No improper driving	Other - Explain in Narrative	0	0	0	N- S	None
FAS 0211	VT0040800/19RM00093	Richmond	Huntington Rd	3.47	1/27/2019	4:51 PM	[No Weather]		[No Direction of Collision]	0	0	0		[No Data]
FAS 0211	VTVSP0100/20A100269	Richmond	Huntington Rd	3.47	1/17/2020	8:04 AM	Cloudy	Driving too fast for conditions- No improper driving	Rear End	0	0	0	S- N	None

**Kenyon Road**  
Crash Data  
01/01/2016 - 08/31/2021

Reporting Agency/Incident No.	Town	Route	Crash Date	Time	Weather	Contributing Circumstances	Direction of Collision	Number of Injuries	Number of Fatalities	Number of Untimely Deaths	Location	Injury Type
VT0040800/16RM00092	Richmond	T0008	1/29/2016	6:45 PM	Snow	Driving too fast for conditions	Single Vehicle Crash	0	0	0	Kenyon Road at Hinesburg Road	None
VT0040800/16RM00188	Richmond	T0008	2/23/2016	7:48 PM	Cloudy	No improper driving	Single Vehicle Crash	1	0	0	421 Kenyon Road at Turkey Hill Road	Possible
VT0040800/16RM00584	Richmond	T0008	6/3/2016	10:28 PM	Clear	Driving too fast for conditions	Single Vehicle Crash	1	0	0	1724 Kenyon Road at 1492 Kenyon Road	Possible
VT0040800/17RM01295	Richmond	T0008	12/21/2017	6:34 PM	Cloudy	No improper driving- Not Distracted	Single Vehicle Crash	0	0	0	Kenyon Road at Hinesburg Rd	None
VT0040800/18RM00068	Richmond	T0008	1/19/2018	7:50 AM	Cloudy	Failure to keep in proper lane	Single Vehicle Crash	0	0	0	1250 Kenyon Rd at Route 2	None
VT0040800/18RM00215	Richmond	T0008	3/8/2018	7:31 AM	Snow	Driving too fast for conditions- No improper driving	Opp Direction Sideswipe	1	0	0	1722 Kenyon Rd at Fays Corner	Suspected Minor
VT0040800/19RM00042	Richmond	T0008	1/11/2019	11:10 PM	Clear	Unknown	Single Vehicle Crash	0	0	0	932 Kenyon Rd at Sylvan Ridge Rd	[No Data]
VT0040800/19RM00528	Richmond	T0008	7/31/2019	3:00 PM	[No Weather]		[No Direction of Collision]	0	0	0	2300 KENYON ROAD at HINESBURG ROAD	None
VT0040800/19RM00548	Richmond	T0008	8/8/2019	5:15 PM	[No Weather]		[No Direction of Collision]	0	0	0	KENYON RD at	[No Data]
VT0040800/19RM00787	Richmond	T0008	11/12/2019	9:11 AM	[No Weather]		[No Direction of Collision]	0	0	0	725 KENYON ROAD at TURKEY HILL LA	None
VT0040800/19RM00842	Richmond	T0008	12/5/2019	7:44 PM	Snow	Driving too fast for conditions	Single Vehicle Crash	0	0	0	1724 Kenyon Rd at 1724 Kenyon Rd	None
VT0040800/19RM00843	Richmond	T0008	12/6/2019	4:03 PM	Snow	Driving too fast for conditions	Single Vehicle Crash	0	0	0	1722 Kenyon Road at Hinesburg Road	None
VT0040800/19RM00848	Richmond	T0008	12/7/2019	10:20 AM	[No Weather]		[No Direction of Collision]	0	0	0	777 KENYON ROAD at SYLVAN RIDGE	None
VT0040800/19RM00862	Richmond	T0008	12/13/2019	7:15 AM	[No Weather]		[No Direction of Collision]	1	0	0	1193 KENYON ROAD at BOX 1193	Possible
VT0040800/20RM00104	Richmond	T0008	2/28/2020	12:00 PM	Cloudy	Driving too fast for conditions- No improper driving	Opp Direction Sideswipe	0	0	0	Kenyon Road at Hinesburg Road	None
VTVSP0100/20A102163	Richmond	T0008	5/17/2020	9:25 AM	[No Weather]		[No Direction of Collision]	0	0	0	Kenyon Rd	[No Data]
VT0040800/20RM00217	Richmond	T0008	5/17/2020	8:49 AM	[No Weather]		[No Direction of Collision]	0	0	0	Kenyon Rd	[No Data]
VT0040800/20RM00367	Richmond	T0008	7/22/2020	12:56 PM	Cloudy	Driving too fast for conditions	Single Vehicle Crash	0	0	0	32 Turkey Hill Rd at Turkey Hill Rd	None

**Speed Data**

---

# Chittenden County RPC

110 W Canal St  
Winooski, VT 05404

Site Code: RICH20  
 Station ID:  
 Location 1: Hinesburg Rd, Richmond VT  
 Location 2: Between Wild Apple Ln and Lilac Knoll  
 Direction: East, A to B

File Name: RICH20  
 Date Printed: 6/22/2021  
 Start Date: 6/10/2021  
 End Date: 6/15/2021

6/10/2021	> 15 - 20	> 20 - 25	> 25 - 30	> 30 - 35	> 35 - 40	> 40 - 45	> 45 - 50	> 50 - 55	> 55 - 60	> 60 - 65	> 65 - 70	> 70 MPH	Total
Time	0 - 15 MPH	MPH	MPH	MPH	MPH	MPH	MPH	MPH	MPH	MPH	MPH	MPH	
12:00 AM	0	0	0	0	0	0	0	1	0	0	0	0	1
1:00	0	0	0	0	0	0	1	0	0	0	1	0	2
2:00	0	0	0	0	0	1	0	0	0	0	0	0	1
3:00	0	0	0	0	0	1	0	1	0	0	0	0	2
4:00	0	0	0	0	1	1	0	2	1	1	0	0	6
5:00	0	0	1	0	0	3	4	1	3	0	0	0	12
6:00	0	1	1	0	0	1	5	4	6	3	0	0	21
7:00	1	0	1	0	5	5	23	23	10	2	1	0	71
8:00	1	0	1	0	1	4	14	25	7	1	2	0	56
9:00	0	2	0	1	0	8	13	21	7	0	0	0	52
10:00	0	0	1	0	0	5	20	24	5	1	0	0	56
11:00	0	1	1	0	2	5	17	18	9	1	0	0	54
12:00 PM	0	0	2	0	1	11	26	16	8	2	0	0	66
1:00	0	0	4	1	0	4	26	25	4	2	0	0	66
2:00	0	1	0	0	1	7	28	29	6	1	0	0	73
3:00	0	0	4	0	3	12	46	43	12	0	0	0	120
4:00	0	0	0	0	0	4	35	52	9	3	0	0	103
5:00	1	0	2	0	0	7	38	53	15	3	0	1	120
6:00	0	3	0	0	0	7	12	30	20	1	1	0	74
7:00	0	0	1	0	2	1	18	22	12	0	0	0	57
8:00	0	2	0	0	0	5	16	14	1	0	0	0	38
9:00	0	0	0	0	1	7	7	4	4	1	1	0	25
10:00	0	0	0	0	0	1	3	3	2	0	0	0	9
11:00	0	0	0	0	0	0	2	4	0	1	0	0	7
<b>Total</b>	<b>3</b>	<b>10</b>	<b>19</b>	<b>2</b>	<b>17</b>	<b>100</b>	<b>354</b>	<b>415</b>	<b>141</b>	<b>23</b>	<b>6</b>	<b>1</b>	<b>1092</b>



# Chittenden County RPC

110 W Canal St  
Winooski, VT 05404

Site Code: RICH20  
Station ID:  
Location 1: Hinesburg Rd, Richmond VT  
Location 2: Between Wild Apple Ln and Lilac Knoll  
Direction: East, A to B

File Name: RICH20  
Date Printed: 6/22/2021  
Start Date: 6/10/2021  
End Date: 6/15/2021

6/11/2021	> 15 - 20	> 20 - 25	> 25 - 30	> 30 - 35	> 35 - 40	> 40 - 45	> 45 - 50	> 50 - 55	> 55 - 60	> 60 - 65	> 65 - 70	> 70 MPH	Total
Time	0 - 15 MPH	MPH	MPH	MPH	MPH	MPH	MPH	MPH	MPH	MPH	MPH	MPH	
12:00 AM	0	0	0	0	0	1	0	1	0	0	0	0	2
1:00	0	0	0	0	0	0	0	0	0	0	0	0	0
2:00	0	0	0	0	0	0	0	0	0	0	0	0	0
3:00	0	0	0	0	0	0	0	0	0	0	0	0	0
4:00	0	0	0	0	0	2	0	1	1	0	0	0	4
5:00	0	0	0	0	0	1	2	5	3	1	0	0	12
6:00	0	0	1	0	0	0	3	4	4	0	0	0	12
7:00	1	0	2	0	1	14	25	29	6	1	0	1	81
8:00	0	2	0	0	0	4	14	12	10	6	0	0	48
9:00	0	0	0	2	0	6	24	22	11	0	0	0	65
10:00	1	1	0	0	0	2	10	12	3	1	0	0	30
11:00	1	0	0	0	0	12	15	26	6	1	0	0	61
12:00 PM	0	0	1	0	1	10	20	24	12	3	1	0	72
1:00	0	1	0	0	1	7	31	29	5	0	0	0	74
2:00	0	0	0	0	0	7	27	39	12	2	0	1	88
3:00	0	0	1	0	0	11	35	27	21	0	0	0	95
4:00	2	1	1	0	5	11	43	46	15	6	0	0	130
5:00	0	1	1	0	1	8	37	44	17	3	0	0	112
6:00	1	1	0	1	0	8	18	22	5	0	0	1	57
7:00	1	0	0	0	2	1	23	16	3	1	1	0	48
8:00	0	0	4	1	0	4	17	11	3	1	0	0	41
9:00	0	0	0	0	0	2	8	7	6	0	0	0	23
10:00	0	0	0	0	0	3	10	4	2	0	0	0	19
11:00	0	0	0	0	1	0	3	3	0	0	0	0	7
Total	7	7	11	4	12	114	365	384	145	26	2	3	1081

# Chittenden County RPC

110 W Canal St  
Winooski, VT 05404

Site Code: RICH20  
Station ID:  
Location 1: Hinesburg Rd, Richmond VT  
Location 2: Between Wild Apple Ln and Lilac Knoll  
Direction: East, A to B

File Name: RICH20  
Date Printed: 6/22/2021  
Start Date: 6/10/2021  
End Date: 6/15/2021

6/12/2021	> 15 - 20	> 20 - 25	> 25 - 30	> 30 - 35	> 35 - 40	> 40 - 45	> 45 - 50	> 50 - 55	> 55 - 60	> 60 - 65	> 65 - 70	> 70 MPH	Total
Time	0 - 15 MPH	MPH	MPH	MPH	MPH	MPH	MPH	MPH	MPH	MPH	MPH	MPH	
12:00 AM	0	0	0	0	0	0	1	0	3	0	0	0	4
1:00	0	0	0	0	0	0	0	0	0	0	0	0	0
2:00	0	0	0	0	0	0	0	0	0	0	0	0	0
3:00	0	0	0	0	0	0	1	0	0	0	0	0	1
4:00	0	0	0	0	0	0	2	0	1	1	0	0	4
5:00	0	0	0	0	0	1	0	3	0	0	1	0	5
6:00	0	0	0	0	0	1	1	6	4	2	0	0	14
7:00	0	0	0	0	0	2	11	12	6	2	0	0	34
8:00	0	1	0	0	3	3	10	16	9	3	0	0	45
9:00	0	0	0	1	1	4	19	27	14	4	0	0	70
10:00	0	2	1	0	0	10	18	24	9	0	0	0	64
11:00	2	1	1	0	1	6	23	20	9	1	0	0	64
12:00 PM	0	3	2	0	0	4	33	28	12	2	0	0	84
1:00	1	0	0	0	2	5	32	29	17	2	0	0	88
2:00	1	3	3	0	4	14	26	28	10	1	0	0	90
3:00	0	0	0	1	1	5	22	35	9	2	1	1	78
4:00	1	1	2	0	2	7	32	41	11	3	0	0	100
5:00	0	0	0	0	1	12	17	32	9	0	0	0	71
6:00	0	0	1	1	0	3	21	23	12	2	1	1	65
7:00	0	0	1	0	0	2	10	21	6	0	0	0	40
8:00	0	0	0	0	1	3	17	11	2	0	0	0	34
9:00	0	0	0	0	1	8	16	9	1	0	0	0	35
10:00	0	0	0	0	1	0	8	2	2	0	0	0	13
11:00	0	0	0	0	0	0	1	2	0	0	0	0	3
Total	5	11	11	3	18	90	321	369	146	25	3	2	1006

# Chittenden County RPC

110 W Canal St  
Winooski, VT 05404

Site Code: RICH20  
 Station ID:  
 Location 1: Hinesburg Rd, Richmond VT  
 Location 2: Between Wild Apple Ln and Lilac Knoll  
 Direction: East, A to B

File Name: RICH20  
 Date Printed: 6/22/2021  
 Start Date: 6/10/2021  
 End Date: 6/15/2021

6/13/2021	> 15 - 20	> 20 - 25	> 25 - 30	> 30 - 35	> 35 - 40	> 40 - 45	> 45 - 50	> 50 - 55	> 55 - 60	> 60 - 65	> 65 - 70	> 70 MPH	Total
Time	0 - 15 MPH	MPH	MPH	MPH	MPH	MPH	MPH	MPH	MPH	MPH	MPH	MPH	
12:00 AM	0	0	0	0	0	2	3	1	1	0	0	0	7
1:00	0	0	0	0	0	0	1	3	0	0	0	0	4
2:00	0	0	0	0	0	0	1	0	0	0	0	0	1
3:00	0	0	0	0	0	0	1	1	0	0	0	0	2
4:00	0	0	0	0	0	0	0	0	0	0	0	0	0
5:00	0	0	0	0	0	2	2	1	0	0	0	0	5
6:00	0	0	0	0	1	0	5	6	1	1	0	0	14
7:00	1	1	0	0	0	1	6	8	4	1	0	0	22
8:00	0	1	0	0	0	2	9	14	4	1	0	0	31
9:00	2	1	2	2	3	4	13	11	3	1	0	0	42
10:00	0	3	1	1	0	4	16	25	9	3	0	1	63
11:00	0	2	0	0	0	14	21	27	5	4	1	0	74
12:00 PM	1	1	4	3	3	12	30	16	8	3	1	0	82
1:00	1	0	2	2	3	13	29	18	8	0	0	0	76
2:00	3	0	0	2	0	12	30	28	12	0	0	0	87
3:00	0	3	0	1	2	10	30	39	4	1	0	0	90
4:00	1	1	1	1	1	1	25	38	11	3	1	0	84
5:00	0	1	0	1	0	4	23	38	8	2	0	0	77
6:00	0	0	1	1	0	8	29	21	9	1	0	1	71
7:00	0	1	0	0	0	4	18	16	5	1	0	0	45
8:00	0	0	0	0	0	4	15	9	4	1	0	0	33
9:00	0	0	0	1	0	3	10	2	2	0	0	0	18
10:00	0	0	0	0	0	1	4	1	1	0	0	0	7
11:00	0	0	0	0	0	2	1	0	1	0	0	0	4
<b>Total</b>	<b>9</b>	<b>15</b>	<b>11</b>	<b>15</b>	<b>13</b>	<b>103</b>	<b>322</b>	<b>323</b>	<b>100</b>	<b>23</b>	<b>3</b>	<b>2</b>	<b>939</b>

# Chittenden County RPC

110 W Canal St  
Winooski, VT 05404

Site Code: RICH20  
Station ID:  
Location 1: Hinesburg Rd, Richmond VT  
Location 2: Between Wild Apple Ln and Lilac Knoll  
Direction: East, A to B

File Name: RICH20  
Date Printed: 6/22/2021  
Start Date: 6/10/2021  
End Date: 6/15/2021

6/14/2021	> 15 - 20	> 20 - 25	> 25 - 30	> 30 - 35	> 35 - 40	> 40 - 45	> 45 - 50	> 50 - 55	> 55 - 60	> 60 - 65	> 65 - 70	> 70 MPH	Total
Time	0 - 15 MPH	MPH	MPH	MPH	MPH	MPH	MPH	MPH	MPH	MPH	MPH	MPH	
12:00 AM	0	0	0	0	0	2	0	0	0	0	0	0	2
1:00	0	0	0	0	0	0	0	0	0	0	0	0	0
2:00	0	0	0	0	0	0	0	0	0	1	0	0	1
3:00	0	0	0	0	1	0	0	0	0	0	0	0	1
4:00	0	0	0	0	0	1	0	0	0	0	0	0	1
5:00	0	0	0	0	0	5	6	0	4	0	0	0	15
6:00	0	0	1	0	0	0	0	12	2	0	0	0	15
7:00	0	0	0	0	2	12	27	23	4	1	0	0	69
8:00	0	0	0	0	0	2	17	21	10	1	0	0	51
9:00	0	0	0	0	1	7	13	17	4	0	1	0	43
10:00	0	0	0	0	2	6	16	9	5	0	0	0	38
11:00	0	0	0	0	1	5	28	13	2	2	0	0	51
12:00 PM	0	0	0	0	1	8	40	14	0	0	0	0	63
1:00	0	0	1	1	5	23	20	4	2	0	0	0	56
2:00	0	0	0	2	14	33	17	0	0	0	0	0	66
3:00	0	0	0	0	13	46	9	0	0	0	0	0	68
4:00	0	0	0	4	35	42	13	0	0	0	0	0	94
5:00	0	0	0	1	18	31	10	0	0	0	0	0	60
6:00	0	0	0	1	11	28	4	0	0	0	0	0	44
7:00	0	0	0	0	4	14	2	1	0	0	0	0	21
8:00	0	0	0	1	1	0	0	0	0	0	0	0	2
9:00	0	0	0	0	0	1	0	0	0	0	0	0	1
10:00	0	0	0	0	0	1	0	0	0	0	0	0	1
11:00	0	0	0	0	0	0	0	0	0	0	0	0	0
Total	0	0	2	10	109	267	222	114	33	5	1	0	763
Grand Total	24	43	54	34	169	674	1584	1605	565	102	15	8	4881

Stats	Percentile	15th	50th	85th	95th
Speed		44.6	49.9	53.3	
Mean Speed (Average)		44.3			
10 MPH Pace Speed		40-49			
Number in Pace		3723			
Percent in Pace		64.0%			
Number > 45 MPH		2299			
Percent > 45 MPH		47.3%			

# Chittenden County RPC

110 W Canal St  
Winooski, VT 05404

Site Code: RICH20  
Station ID:  
Location 1: Hinesburg Rd, Richmond VT  
Location 2: Between Wild Apple Ln and Lilac Knoll  
Direction: West, B to A

File Name: RICH20  
Date Printed: 6/22/2021  
Start Date: 6/10/2021  
End Date: 6/15/2021

6/10/2021	> 15 - 20	> 20 - 25	> 25 - 30	> 30 - 35	> 35 - 40	> 40 - 45	> 45 - 50	> 50 - 55	> 55 - 60	> 60 - 65	> 65 - 70	> 70 MPH	Total
Time	0 - 15 MPH	MPH	MPH	MPH	MPH	MPH	MPH	MPH	MPH	MPH	MPH	MPH	
12:00 AM	0	0	0	0	0	0	0	0	0	0	0	0	0
1:00	0	0	0	0	0	0	0	0	0	0	0	0	0
2:00	0	0	0	0	0	0	0	0	0	0	0	0	1
3:00	0	0	0	0	0	0	0	1	1	0	0	0	2
4:00	0	0	0	0	1	2	2	0	0	0	0	0	5
5:00	0	0	0	0	0	1	6	3	0	3	1	0	14
6:00	0	1	1	0	0	7	12	15	10	3	0	0	49
7:00	0	1	0	0	0	5	26	41	32	4	0	2	111
8:00	0	0	0	1	2	10	32	36	18	2	0	0	101
9:00	1	0	0	0	1	7	17	20	10	2	0	0	58
10:00	0	0	0	0	1	9	11	25	7	2	0	0	55
11:00	0	1	1	0	1	9	11	10	11	1	0	0	45
12:00 PM	0	1	0	0	1	14	22	18	8	0	0	0	64
1:00	0	1	0	0	1	6	15	18	5	0	0	0	46
2:00	1	0	0	0	2	7	31	28	12	1	0	0	82
3:00	0	0	0	0	2	6	34	32	10	3	1	0	88
4:00	0	5	0	1	1	5	33	37	9	1	0	0	92
5:00	1	1	0	1	3	5	29	30	13	2	0	0	85
6:00	3	0	0	0	3	8	24	36	7	1	0	0	82
7:00	1	0	0	0	2	9	22	14	3	3	0	0	54
8:00	0	0	0	0	0	5	11	16	6	0	0	0	38
9:00	0	0	0	0	1	4	4	9	2	0	0	0	20
10:00	0	0	0	0	0	2	3	6	0	0	0	0	11
11:00	0	0	0	0	0	2	0	3	1	0	0	0	6
<b>Total</b>	<b>7</b>	<b>11</b>	<b>2</b>	<b>3</b>	<b>22</b>	<b>123</b>	<b>345</b>	<b>398</b>	<b>165</b>	<b>29</b>	<b>2</b>	<b>2</b>	<b>1109</b>

# Chittenden County RPC

110 W Canal St  
Winooski, VT 05404

Site Code: RICH20  
Station ID:  
Location 1: Hinesburg Rd, Richmond VT  
Location 2: Between Wild Apple Ln and Lilac Knoll  
Direction: West, B to A

File Name: RICH20  
Date Printed: 6/22/2021  
Start Date: 6/10/2021  
End Date: 6/15/2021

6/11/2021	> 15 - 20	> 20 - 25	> 25 - 30	> 30 - 35	> 35 - 40	> 40 - 45	> 45 - 50	> 50 - 55	> 55 - 60	> 60 - 65	> 65 - 70	> 70 MPH	Total
Time	0 - 15 MPH	MPH	MPH	MPH	MPH	MPH	MPH	MPH	MPH	MPH	MPH	MPH	
12:00 AM	0	0	0	0	1	0	1	0	1	0	0	0	3
1:00	0	0	0	0	0	0	0	0	0	0	0	0	0
2:00	0	0	0	0	0	0	0	0	0	0	0	0	0
3:00	0	0	0	0	0	0	1	1	0	0	0	0	2
4:00	0	0	0	0	2	0	1	1	0	0	0	0	4
5:00	0	0	0	0	1	0	2	5	3	1	1	0	13
6:00	0	0	0	0	0	2	11	11	7	2	0	0	33
7:00	0	0	0	0	2	10	42	37	13	1	0	0	105
8:00	0	0	0	0	1	11	26	36	9	2	1	0	86
9:00	0	0	0	0	1	4	26	26	5	2	0	0	64
10:00	0	0	0	0	1	7	28	17	7	1	0	0	61
11:00	0	0	0	0	3	7	11	22	11	0	0	0	54
12:00 PM	0	0	0	0	3	3	21	28	11	1	1	2	70
1:00	0	1	2	0	6	5	21	25	11	4	0	0	75
2:00	0	0	0	0	1	10	25	23	11	0	0	0	70
3:00	0	0	0	1	1	10	26	42	6	1	3	0	90
4:00	0	0	2	0	4	9	32	41	9	1	0	0	98
5:00	1	0	0	1	1	6	24	28	19	3	1	1	85
6:00	0	0	0	1	2	9	16	30	8	0	0	0	66
7:00	0	1	0	0	0	3	23	25	1	1	0	0	54
8:00	1	0	0	0	1	4	18	15	2	0	0	1	42
9:00	0	0	0	0	1	3	10	7	2	1	0	0	24
10:00	0	0	1	0	1	1	4	3	2	0	0	0	12
11:00	0	0	0	0	0	1	3	2	2	0	0	0	8
<b>Total</b>	<b>2</b>	<b>2</b>	<b>5</b>	<b>3</b>	<b>33</b>	<b>105</b>	<b>372</b>	<b>425</b>	<b>140</b>	<b>21</b>	<b>7</b>	<b>4</b>	<b>1119</b>

# Chittenden County RPC

110 W Canal St  
Winooski, VT 05404

Site Code: RICH20  
Station ID:  
Location 1: Hinesburg Rd, Richmond VT  
Location 2: Between Wild Apple Ln and Lilac Knoll  
Direction: West, B to A

File Name: RICH20  
Date Printed: 6/22/2021  
Start Date: 6/10/2021  
End Date: 6/15/2021

6/12/2021	> 15 - 20	> 20 - 25	> 25 - 30	> 30 - 35	> 35 - 40	> 40 - 45	> 45 - 50	> 50 - 55	> 55 - 60	> 60 - 65	> 65 - 70	> 70 MPH	Total
Time	0 - 15 MPH	MPH	MPH	MPH	MPH	MPH	MPH	MPH	MPH	MPH	MPH	MPH	
12:00 AM	0	0	0	0	0	0	2	1	0	0	0	0	3
1:00	0	0	0	0	0	1	1	0	1	0	0	0	3
2:00	0	0	0	0	0	0	1	0	0	0	0	0	1
3:00	0	0	0	0	0	0	1	1	0	0	0	0	2
4:00	0	0	0	0	0	0	1	0	0	0	0	0	1
5:00	0	0	0	0	0	0	0	1	2	0	0	0	3
6:00	0	0	0	0	0	1	6	7	3	0	0	1	18
7:00	0	1	1	0	0	4	9	9	8	2	0	0	34
8:00	0	0	0	0	1	3	10	21	11	2	0	0	48
9:00	0	0	1	2	0	6	19	29	10	5	0	0	72
10:00	0	0	1	0	1	9	25	40	13	2	0	0	91
11:00	1	0	1	0	2	11	19	22	7	1	0	0	64
12:00 PM	2	3	0	0	5	15	27	28	13	1	0	0	94
1:00	2	2	1	0	1	11	26	31	10	1	0	0	85
2:00	1	2	0	0	1	8	26	19	9	2	0	0	68
3:00	0	1	1	1	0	12	27	20	9	2	0	0	73
4:00	0	0	1	0	1	7	31	24	5	1	1	0	71
5:00	0	3	0	1	1	12	22	35	18	1	0	1	94
6:00	0	0	0	0	2	9	22	24	1	5	0	0	63
7:00	1	0	0	0	1	6	20	12	1	0	0	0	41
8:00	0	1	0	0	2	8	15	12	3	0	0	0	41
9:00	0	0	0	0	3	6	11	6	2	0	0	0	28
10:00	0	0	0	0	1	2	3	3	0	0	1	0	10
11:00	0	0	0	0	1	0	1	1	0	0	0	0	3
Total	7	13	7	4	23	131	325	346	126	25	2	1	1011

# Chittenden County RPC

110 W Canal St  
Winooski, VT 05404

Site Code: RICH20  
 Station ID:  
 Location 1: Hinesburg Rd, Richmond VT  
 Location 2: Between Wild Apple Ln and Lilac Knoll  
 Direction: West, B to A

File Name: RICH20  
 Date Printed: 6/22/2021  
 Start Date: 6/10/2021  
 End Date: 6/15/2021

6/13/2021	> 15 - 20	> 20 - 25	> 25 - 30	> 30 - 35	> 35 - 40	> 40 - 45	> 45 - 50	> 50 - 55	> 55 - 60	> 60 - 65	> 65 - 70	> 70 MPH	Total
Time	0 - 15 MPH	MPH	MPH	MPH	MPH	MPH	MPH	MPH	MPH	MPH	MPH	MPH	
12:00 AM	0	0	0	0	1	0	2	2	0	0	0	0	5
1:00	0	0	0	0	0	0	0	1	1	0	0	0	2
2:00	0	0	0	0	0	0	0	0	0	0	0	0	0
3:00	0	0	0	0	0	0	3	1	0	0	0	0	4
4:00	0	0	0	0	1	0	0	0	0	0	0	0	1
5:00	0	0	0	0	0	0	2	2	0	0	0	0	4
6:00	0	0	0	0	0	0	3	6	1	0	0	0	10
7:00	0	0	0	0	0	3	9	5	2	0	0	0	19
8:00	0	0	0	0	2	3	11	18	8	0	1	0	43
9:00	2	1	0	3	0	7	20	18	7	0	1	0	59
10:00	0	2	0	0	1	10	31	22	10	2	0	0	78
11:00	1	1	1	1	1	9	15	31	10	1	1	0	72
12:00 PM	1	3	1	0	8	10	28	21	12	1	0	0	85
1:00	0	0	0	1	3	4	31	29	2	1	0	1	72
2:00	0	2	0	0	2	12	28	24	5	2	0	0	75
3:00	0	2	1	0	2	14	27	30	8	5	1	0	90
4:00	0	4	0	0	5	11	29	20	5	0	0	0	74
5:00	1	0	0	0	4	5	28	26	9	1	1	0	75
6:00	0	0	0	0	2	6	16	17	8	1	0	0	50
7:00	0	0	0	1	0	3	20	13	7	0	0	1	45
8:00	0	0	0	0	0	3	10	13	2	1	0	0	29
9:00	0	0	0	1	2	6	4	1	1	0	0	0	15
10:00	0	0	0	1	0	0	3	1	1	0	0	0	6
11:00	0	0	0	0	0	0	1	0	0	0	0	0	1
<b>Total</b>	<b>5</b>	<b>15</b>	<b>3</b>	<b>8</b>	<b>34</b>	<b>106</b>	<b>321</b>	<b>301</b>	<b>99</b>	<b>15</b>	<b>5</b>	<b>1</b>	<b>914</b>



# Chittenden County RPC

110 W Canal St  
Winooski, VT 05404

Site Code: RICH20  
Station ID:  
Location 1: Hinesburg Rd, Richmond VT  
Location 2: Between Wild Apple Ln and Lilac Knoll  
Direction: West, B to A

File Name: RICH20  
Date Printed: 6/22/2021  
Start Date: 6/10/2021  
End Date: 6/15/2021

6/14/2021	> 15 - 20	> 20 - 25	> 25 - 30	> 30 - 35	> 35 - 40	> 40 - 45	> 45 - 50	> 50 - 55	> 55 - 60	> 60 - 65	> 65 - 70	> 70 MPH	Total
Time	0 - 15 MPH	MPH	MPH	MPH	MPH	MPH	MPH	MPH	MPH	MPH	MPH	MPH	
12:00 AM	0	0	0	0	0	0	0	0	0	0	0	0	0
1:00	0	0	0	0	0	0	0	0	0	0	0	0	0
2:00	0	0	0	0	0	0	1	0	0	0	0	0	1
3:00	0	0	0	0	0	1	2	1	0	0	0	0	4
4:00	0	0	0	1	0	0	1	0	0	0	0	0	2
5:00	0	0	0	0	0	0	4	4	1	0	1	0	10
6:00	1	0	0	1	0	1	7	9	4	3	3	0	29
7:00	0	0	0	1	2	9	33	33	21	4	1	0	104
8:00	0	0	0	0	1	7	21	26	16	5	0	0	76
9:00	0	0	0	0	1	5	21	18	11	1	1	0	58
10:00	0	0	0	1	0	3	20	16	10	3	0	0	53
11:00	0	0	0	0	5	5	14	13	4	0	1	0	42
12:00 PM	0	0	0	0	0	6	15	20	10	3	0	0	54
1:00	0	0	0	0	0	0	2	3	2	0	0	0	7
2:00	0	0	0	0	0	0	0	0	0	0	0	0	0
3:00	0	0	0	0	0	0	0	0	0	0	0	0	0
4:00	0	0	0	1	0	0	0	0	0	0	0	0	1
5:00	0	0	0	0	0	0	0	0	0	0	0	0	0
6:00	0	0	0	0	0	0	0	0	0	0	0	0	0
7:00	0	0	0	0	0	0	0	0	0	0	0	0	0
8:00	0	0	0	0	0	0	0	0	0	0	0	0	0
9:00	0	0	0	0	0	0	0	0	0	0	0	0	0
10:00	0	0	0	0	0	0	0	0	0	0	0	0	0
11:00	0	0	0	0	0	0	0	0	0	0	0	0	0
<b>Total</b>	<b>1</b>	<b>0</b>	<b>0</b>	<b>5</b>	<b>9</b>	<b>37</b>	<b>141</b>	<b>143</b>	<b>79</b>	<b>19</b>	<b>7</b>	<b>0</b>	<b>441</b>
<b>Grand Total</b>	<b>22</b>	<b>41</b>	<b>17</b>	<b>23</b>	<b>121</b>	<b>502</b>	<b>1504</b>	<b>1613</b>	<b>609</b>	<b>109</b>	<b>23</b>	<b>8</b>	<b>4594</b>

Stats	Percentile	15th	50th	85th	95th
Speed		44.6	49.9	53.3	
Mean Speed (Average)		45.0			
10 MPH Pace Speed		41-50			
Number in Pace		3466			
Percent in Pace		67.0%			
Number > 45 MPH		2364			
Percent > 45 MPH		51.7%			

# Chittenden County RPC

110 W Canal St  
Winooski, VT 05404

Site Code: RICH20  
Station ID:  
Location 1: Hinesburg Rd, Richmond VT  
Location 2: Between Wild Apple Ln and Lilac Knoll  
Direction: Combined

File Name: RICH20  
Date Printed: 6/22/2021  
Start Date: 6/10/2021  
End Date: 6/15/2021

6/10/2021	> 15 - 20	> 20 - 25	> 25 - 30	> 30 - 35	> 35 - 40	> 40 - 45	> 45 - 50	> 50 - 55	> 55 - 60	> 60 - 65	> 65 - 70	> 70 MPH	Total
Time	0 - 15 MPH	MPH	MPH	MPH	MPH	MPH	MPH	MPH	MPH	MPH	MPH	MPH	
12:00 AM	0	0	0	0	0	0	0	1	0	0	0	0	1
1:00	0	0	0	0	0	0	1	0	0	0	1	0	2
2:00	0	0	0	0	0	1	0	0	0	1	0	0	2
3:00	0	0	0	0	0	1	0	2	1	0	0	0	4
4:00	0	0	0	0	2	3	2	2	1	1	0	0	11
5:00	0	0	1	0	0	4	10	4	3	3	1	0	26
6:00	0	2	2	0	0	8	17	19	16	6	0	0	70
7:00	1	1	1	0	5	10	49	64	42	6	1	2	182
8:00	1	0	1	1	3	14	46	61	25	3	2	0	157
9:00	1	2	0	1	1	15	30	41	17	2	0	0	110
10:00	0	0	1	0	1	14	31	49	12	3	0	0	111
11:00	0	2	2	0	3	14	28	28	20	2	0	0	99
12:00 PM	0	1	2	0	2	25	48	34	16	2	0	0	130
1:00	0	1	4	1	1	10	41	43	9	2	0	0	112
2:00	1	1	0	0	3	14	59	57	18	2	0	0	155
3:00	0	0	4	0	5	18	80	75	22	3	1	0	208
4:00	0	5	0	1	1	9	68	89	18	4	0	0	195
5:00	2	1	2	1	3	12	67	83	28	5	0	1	205
6:00	3	3	0	0	3	15	36	66	27	2	1	0	156
7:00	1	0	1	0	4	10	40	36	15	3	0	0	111
8:00	0	2	0	0	0	10	27	30	7	0	0	0	76
9:00	0	0	0	0	2	11	11	13	6	1	1	0	45
10:00	0	0	0	0	0	3	6	9	2	0	0	0	20
11:00	0	0	0	0	0	2	2	7	1	1	0	0	13
Total	10	21	21	5	39	223	699	813	306	52	8	3	2201

# Chittenden County RPC

110 W Canal St  
Winooski, VT 05404

Site Code: RICH20  
Station ID:  
Location 1: Hinesburg Rd, Richmond VT  
Location 2: Between Wild Apple Ln and Lilac Knoll  
Direction: Combined

File Name: RICH20  
Date Printed: 6/22/2021  
Start Date: 6/10/2021  
End Date: 6/15/2021

6/11/2021	> 15 - 20	> 20 - 25	> 25 - 30	> 30 - 35	> 35 - 40	> 40 - 45	> 45 - 50	> 50 - 55	> 55 - 60	> 60 - 65	> 65 - 70	> 70 MPH	Total	
Time	0 - 15 MPH	MPH	MPH	MPH	MPH	MPH	MPH	MPH	MPH	MPH	MPH	MPH		
12:00 AM	0	0	0	0	1	1	1	1	1	0	0	0	5	
1:00	0	0	0	0	0	0	0	0	0	0	0	0	0	
2:00	0	0	0	0	0	0	0	0	0	0	0	0	0	
3:00	0	0	0	0	0	1	1	0	0	0	0	0	2	
4:00	0	0	0	0	2	2	1	2	1	0	0	0	8	
5:00	0	0	0	0	1	1	4	10	6	2	1	0	25	
6:00	0	0	1	0	0	2	14	15	11	2	0	0	45	
7:00	1	0	2	0	3	24	67	66	19	2	0	1	186	
8:00	0	2	0	0	1	15	40	48	19	8	1	0	134	
9:00	0	0	0	2	1	10	50	48	16	2	0	0	129	
10:00	1	1	0	0	1	9	38	29	10	2	0	0	91	
11:00	1	0	0	0	3	19	26	48	17	1	0	0	115	
12:00 PM	0	0	1	0	4	13	41	52	23	4	2	2	142	
1:00	0	2	2	0	7	12	52	54	16	4	0	0	149	
2:00	0	0	0	0	1	17	52	62	23	2	0	1	158	
3:00	0	0	1	1	1	21	61	69	27	1	3	0	185	
4:00	2	1	3	0	9	20	75	87	24	7	0	0	228	
5:00	1	1	1	1	2	14	61	72	36	6	1	1	197	
6:00	1	1	0	2	2	17	34	52	13	0	0	1	123	
7:00	1	1	0	0	2	4	46	41	4	2	1	0	102	
8:00	1	0	4	1	1	8	35	26	5	1	0	1	83	
9:00	0	0	0	0	1	5	18	14	8	1	0	0	47	
10:00	0	0	1	0	1	4	14	7	4	0	0	0	31	
11:00	0	0	0	0	1	1	6	5	2	0	0	0	15	
Total	9	9	16	7	45	219	737	809	285	47	9	7	1	2200

# Chittenden County RPC

110 W Canal St  
Winooski, VT 05404

Site Code: RICH20  
Station ID:  
Location 1: Hinesburg Rd, Richmond VT  
Location 2: Between Wild Apple Ln and Lilac Knoll  
Direction: Combined

File Name: RICH20  
Date Printed: 6/22/2021  
Start Date: 6/10/2021  
End Date: 6/15/2021

6/12/2021	> 15 - 20	> 20 - 25	> 25 - 30	> 30 - 35	> 35 - 40	> 40 - 45	> 45 - 50	> 50 - 55	> 55 - 60	> 60 - 65	> 65 - 70	> 70 MPH	Total
Time	0 - 15 MPH	MPH	MPH	MPH	MPH	MPH	MPH	MPH	MPH	MPH	MPH	MPH	
12:00 AM	0	0	0	0	0	0	3	1	3	0	0	0	7
1:00	0	0	0	0	0	1	1	0	1	0	0	0	3
2:00	0	0	0	0	0	0	1	0	0	0	0	0	1
3:00	0	0	0	0	0	0	2	1	0	0	0	0	3
4:00	0	0	0	0	0	0	3	0	1	1	0	0	5
5:00	0	0	0	0	0	1	0	4	2	0	1	0	8
6:00	0	0	0	0	0	2	7	13	7	2	0	1	32
7:00	0	1	1	0	0	6	20	21	14	4	0	0	68
8:00	0	1	0	0	4	6	20	37	20	5	0	0	93
9:00	0	0	1	3	1	10	38	56	24	9	0	0	142
10:00	0	2	2	0	1	19	43	64	22	2	0	0	155
11:00	3	1	2	0	3	17	42	42	16	2	0	0	128
12:00 PM	2	6	2	0	5	19	60	56	25	3	0	0	178
1:00	3	2	1	0	3	16	58	60	27	3	0	0	173
2:00	2	5	3	0	5	22	52	47	19	3	0	0	158
3:00	0	1	1	2	1	17	49	55	18	4	1	1	151
4:00	1	1	3	0	3	14	63	65	16	4	1	0	171
5:00	0	3	0	1	2	24	39	67	27	1	0	1	165
6:00	0	0	1	1	2	12	43	47	13	7	1	1	128
7:00	1	0	1	0	1	8	30	33	7	0	0	0	81
8:00	0	1	0	0	3	11	32	23	5	0	0	0	75
9:00	0	0	0	0	4	14	27	15	3	0	0	0	63
10:00	0	0	0	0	2	2	11	5	2	0	1	0	23
11:00	0	0	0	0	1	0	2	3	0	0	0	0	6
Total	12	24	18	7	41	221	646	715	272	50	5	3	2017

# Chittenden County RPC

110 W Canal St  
Winooski, VT 05404

Site Code: RICH20  
Station ID:  
Location 1: Hinesburg Rd, Richmond VT  
Location 2: Between Wild Apple Ln and Lilac Knoll  
Direction: Combined

File Name: RICH20  
Date Printed: 6/22/2021  
Start Date: 6/10/2021  
End Date: 6/15/2021

6/13/2021	> 15 - 20	> 20 - 25	> 25 - 30	> 30 - 35	> 35 - 40	> 40 - 45	> 45 - 50	> 50 - 55	> 55 - 60	> 60 - 65	> 65 - 70	> 70 MPH	Total
Time	0 - 15 MPH	MPH	MPH	MPH	MPH	MPH	MPH	MPH	MPH	MPH	MPH	MPH	
12:00 AM	0	0	0	0	1	2	5	3	1	0	0	0	12
1:00	0	0	0	0	0	0	1	4	1	0	0	0	6
2:00	0	0	0	0	0	0	1	0	0	0	0	0	1
3:00	0	0	0	0	0	0	4	2	0	0	0	0	6
4:00	0	0	0	0	1	0	0	0	0	0	0	0	1
5:00	0	0	0	0	0	2	4	3	0	0	0	0	9
6:00	0	0	0	0	1	0	8	12	2	1	0	0	24
7:00	1	1	0	0	0	4	15	13	6	1	0	0	41
8:00	0	1	0	0	2	5	20	32	12	1	1	0	74
9:00	4	2	2	5	3	11	33	29	10	1	1	0	101
10:00	0	5	1	1	1	14	47	47	19	5	0	1	141
11:00	1	3	1	1	1	23	36	58	15	5	2	0	146
12:00 PM	2	4	5	3	11	22	58	37	20	4	1	0	167
1:00	1	0	2	3	6	17	60	47	10	1	0	0	148
2:00	3	2	0	2	2	24	58	52	17	2	0	0	162
3:00	0	5	1	1	4	24	57	69	12	6	1	0	180
4:00	1	5	1	1	6	12	54	58	16	3	1	0	158
5:00	1	1	0	1	4	9	51	64	17	3	1	0	152
6:00	0	0	1	1	2	14	45	38	17	2	0	1	121
7:00	0	1	0	1	0	7	38	29	12	1	0	1	90
8:00	0	0	0	0	0	7	25	22	6	2	0	0	62
9:00	0	0	0	2	2	9	14	3	3	0	0	0	33
10:00	0	0	0	1	0	1	7	2	2	0	0	0	13
11:00	0	0	0	0	0	2	2	0	1	0	0	0	5
Total	14	30	14	23	47	209	643	624	199	38	8	3	1853

# Chittenden County RPC

110 W Canal St  
Winooski, VT 05404

Site Code: RICH20  
Station ID:  
Location 1: Hinesburg Rd, Richmond VT  
Location 2: Between Wild Apple Ln and Lilac Knoll  
Direction: Combined

File Name: RICH20  
Date Printed: 6/22/2021  
Start Date: 6/10/2021  
End Date: 6/15/2021

6/14/2021	> 15 - 20	> 20 - 25	> 25 - 30	> 30 - 35	> 35 - 40	> 40 - 45	> 45 - 50	> 50 - 55	> 55 - 60	> 60 - 65	> 65 - 70	> 70 MPH	Total
Time	0 - 15 MPH	MPH	MPH	MPH	MPH	MPH	MPH	MPH	MPH	MPH	MPH	MPH	
12:00 AM	0	0	0	0	0	2	0	0	0	0	0	0	2
1:00	0	0	0	0	0	0	0	0	0	0	0	0	0
2:00	0	0	0	0	0	0	1	0	0	1	0	0	2
3:00	0	0	0	0	1	1	2	1	0	0	0	0	5
4:00	0	0	0	1	0	1	1	0	0	0	0	0	3
5:00	0	0	0	0	0	5	10	4	5	0	1	0	25
6:00	1	0	1	1	0	1	7	21	6	3	3	0	44
7:00	0	0	0	1	4	21	60	56	25	5	1	0	173
8:00	0	0	0	0	1	9	38	47	26	6	0	0	127
9:00	0	0	0	0	2	12	34	35	15	1	2	0	101
10:00	0	0	0	1	2	9	36	25	15	3	0	0	91
11:00	0	0	0	0	6	10	42	26	6	2	1	0	93
12:00 PM	0	0	0	0	1	14	55	34	10	3	0	0	117
1:00	0	0	1	1	5	23	22	7	4	0	0	0	63
2:00	0	0	0	2	14	33	17	0	0	0	0	0	66
3:00	0	0	0	0	13	46	9	0	0	0	0	0	68
4:00	0	0	0	5	35	42	13	0	0	0	0	0	95
5:00	0	0	0	1	18	31	10	0	0	0	0	0	60
6:00	0	0	0	1	11	28	4	0	0	0	0	0	44
7:00	0	0	0	0	4	14	2	1	0	0	0	0	21
8:00	0	0	0	1	1	0	0	0	0	0	0	0	2
9:00	0	0	0	0	0	1	0	0	0	0	0	0	1
10:00	0	0	0	0	0	1	0	0	0	0	0	0	1
11:00	0	0	0	0	0	0	0	0	0	0	0	0	0
<b>Total</b>	<b>1</b>	<b>0</b>	<b>2</b>	<b>15</b>	<b>118</b>	<b>304</b>	<b>363</b>	<b>257</b>	<b>112</b>	<b>24</b>	<b>8</b>	<b>0</b>	<b>1204</b>
<b>Grand Total</b>	<b>46</b>	<b>84</b>	<b>71</b>	<b>57</b>	<b>290</b>	<b>1176</b>	<b>3088</b>	<b>3218</b>	<b>1174</b>	<b>211</b>	<b>38</b>	<b>16</b>	<b>9475</b>

Stats	Percentile	15th	50th	85th	95th
Speed		44.6	49.9	53.3	
Mean Speed (Average)		44.6			
10 MPH Pace Speed		41-50			
Number in Pace		7137			
Percent in Pace		65.0%			
Number > 45 MPH		4663			
Percent > 45 MPH		49.5%			

# Chittenden County RPC

110 W Canal St  
Winooski, VT 05404

Site Code: RICH30  
Station ID: RICH30  
Location 1: Huntington Rd, Richmond VT  
Location 2: Between Grandview Dr & Pinetree Rd, 45 MPH  
Direction: A to B, None Specified

File Name: RICH30  
Date Printed: 7/22/2021  
Start Date: 7/15/2021  
End Date: 7/21/2021

7/15/2021		> 15 - 20	> 20 - 25	> 25 - 30	> 30 - 35	> 35 - 40	> 40 - 45	> 45 - 50	> 50 - 55	> 55 - 60	> 60 - 65	> 65 - 70	> 70 MPH	Total
Time	0 - 15 MPH	MPH	MPH	MPH	MPH	MPH	MPH	MPH	MPH	MPH	MPH	MPH		
12:00 AM	0	0	0	0	0	0	3	2	2	1	0	0	0	8
1:00	0	0	0	0	0	1	0	0	0	0	1	0	0	2
2:00	0	0	0	0	0	0	0	1	1	0	0	0	0	2
3:00	0	0	0	0	0	0	0	1	0	0	0	0	0	1
4:00	0	0	0	0	0	0	0	0	0	1	0	0	0	1
5:00	0	0	0	1	0	0	0	2	0	1	0	0	0	4
6:00	0	0	0	0	0	1	2	7	11	2	1	0	0	24
7:00	0	0	0	0	0	3	9	22	10	2	2	0	0	48
8:00	0	0	1	0	0	2	7	31	20	6	1	0	0	68
9:00	0	0	0	0	1	2	12	26	20	3	1	0	0	65
10:00	0	0	0	0	1	1	19	39	14	8	0	0	0	82
11:00	0	0	0	0	2	4	19	28	15	4	2	0	0	74
12:00 PM	1	1	0	1	1	2	14	38	18	4	0	0	0	80
1:00	0	1	0	0	1	6	39	45	22	7	0	0	1	122
2:00	0	0	0	0	2	9	19	36	20	4	0	1	0	91
3:00	0	0	0	0	1	5	30	66	29	6	0	1	0	138
4:00	0	0	0	0	1	6	42	86	72	7	3	0	0	217
5:00	0	1	0	0	0	6	32	97	47	6	2	0	1	192
6:00	0	0	0	0	0	3	16	57	29	7	4	0	0	116
7:00	0	0	0	0	0	1	10	33	15	5	0	0	0	64
8:00	0	1	0	0	0	2	16	29	15	7	1	0	0	71
9:00	0	0	0	0	0	0	13	25	17	2	0	0	0	57
10:00	0	0	0	0	0	0	10	11	7	1	0	0	0	29
11:00	0	0	0	0	0	1	2	3	4	1	2	0	1	14
<b>Total</b>	<b>1</b>	<b>4</b>	<b>1</b>	<b>2</b>	<b>10</b>	<b>55</b>	<b>314</b>	<b>685</b>	<b>388</b>	<b>85</b>	<b>20</b>	<b>2</b>	<b>3</b>	<b>1570</b>

# Chittenden County RPC

110 W Canal St  
Winooski, VT 05404

Site Code: RICH30  
Station ID: RICH30  
Location 1: Huntington Rd, Richmond VT  
Location 2: Between Grandview Dr & Pinetree Rd, 45 MPH  
Direction: A to B, None Specified

File Name: RICH30  
Date Printed: 7/22/2021  
Start Date: 7/15/2021  
End Date: 7/21/2021

7/16/2021	> 15 - 20	> 20 - 25	> 25 - 30	> 30 - 35	> 35 - 40	> 40 - 45	> 45 - 50	> 50 - 55	> 55 - 60	> 60 - 65	> 65 - 70	> 70 MPH	Total
Time 0 - 15 MPH	MPH	MPH	MPH	MPH	MPH	MPH	MPH	MPH	MPH	MPH	MPH	MPH	
12:00 AM	0	1	0	0	0	0	2	1	1	1	1	0	7
1:00	0	0	0	0	0	0	0	0	0	1	1	0	2
2:00	0	0	0	0	0	0	0	0	2	0	0	0	2
3:00	0	0	0	0	0	0	0	0	0	0	0	0	0
4:00	0	0	0	0	0	0	0	0	1	0	0	0	1
5:00	0	0	0	0	0	0	2	2	0	0	0	0	4
6:00	0	0	0	0	0	1	2	7	3	2	2	0	17
7:00	0	0	0	1	1	2	8	6	13	0	2	0	33
8:00	0	0	0	0	0	6	9	24	16	6	1	0	62
9:00	0	0	0	2	0	3	15	29	13	1	0	0	63
10:00	0	0	0	0	0	2	8	23	13	3	2	0	51
11:00	0	0	0	0	2	7	21	22	17	4	0	0	73
12:00 PM	0	0	0	0	0	5	32	31	19	3	2	0	92
1:00	0	0	0	0	4	2	18	42	17	4	1	0	88
2:00	0	1	0	0	4	6	15	31	22	8	2	0	89
3:00	0	0	0	1	0	6	33	45	35	8	1	1	131
4:00	0	0	0	1	1	4	35	73	33	9	0	0	156
5:00	0	0	1	0	0	3	26	83	50	5	4	0	173
6:00	0	0	0	0	0	5	21	58	35	7	2	0	130
7:00	0	0	0	1	1	2	13	28	22	4	3	0	74
8:00	0	0	0	0	0	1	10	16	16	6	0	2	51
9:00	0	0	1	0	0	0	16	31	17	2	1	0	68
10:00	0	0	0	0	0	0	7	10	9	6	1	0	33
11:00	0	0	0	0	0	0	7	11	11	1	0	0	30
Total	0	2	2	6	13	55	300	573	365	81	26	3	1430



# Chittenden County RPC

110 W Canal St  
Winooski, VT 05404

Site Code: RICH30  
Station ID: RICH30  
Location 1: Huntington Rd, Richmond VT  
Location 2: Between Grandview Dr & Pinetree Rd, 45 MPH  
Direction: A to B, None Specified

File Name: RICH30  
Date Printed: 7/22/2021  
Start Date: 7/15/2021  
End Date: 7/21/2021

7/17/2021		> 15 - 20	> 20 - 25	> 25 - 30	> 30 - 35	> 35 - 40	> 40 - 45	> 45 - 50	> 50 - 55	> 55 - 60	> 60 - 65	> 65 - 70	> 70 MPH	Total
Time	0 - 15 MPH	MPH	MPH	MPH	MPH	MPH	MPH	MPH	MPH	MPH	MPH	MPH		
12:00 AM	0	0	0	0	0	0	0	0	3	2	1	0	0	6
1:00	0	0	0	0	0	0	1	0	0	0	0	0	0	1
2:00	0	0	0	0	0	0	1	0	3	0	0	0	0	4
3:00	0	0	0	0	0	1	1	0	0	0	0	0	1	3
4:00	0	0	0	0	0	0	0	0	1	2	0	0	0	3
5:00	0	0	0	0	0	0	0	0	1	0	0	0	0	1
6:00	0	0	0	0	0	0	2	6	4	0	0	0	0	12
7:00	0	0	0	0	0	1	3	9	3	0	0	0	0	16
8:00	0	0	0	0	0	1	7	14	13	3	0	2	0	40
9:00	0	0	0	0	1	2	15	37	12	3	0	0	0	70
10:00	1	0	0	0	0	3	19	31	14	2	3	0	0	73
11:00	0	0	0	0	0	5	16	43	24	8	0	0	0	96
12:00 PM	0	0	0	0	0	11	20	50	21	3	0	0	0	105
1:00	1	0	0	1	1	10	29	47	26	7	1	1	0	124
2:00	0	0	0	0	0	4	19	48	27	7	1	0	1	107
3:00	0	0	0	0	0	2	25	49	31	6	2	0	0	115
4:00	0	0	1	2	0	2	11	44	33	7	2	0	0	102
5:00	0	0	0	0	1	4	11	32	15	2	1	0	0	66
6:00	0	0	0	1	0	1	7	25	15	2	0	0	1	52
7:00	0	0	0	0	0	2	12	17	13	4	1	0	0	49
8:00	0	0	0	0	0	1	16	27	7	4	0	0	0	55
9:00	0	0	0	0	0	6	10	12	8	1	1	0	1	39
10:00	0	0	0	0	0	1	4	8	5	4	0	0	0	22
11:00	0	0	0	0	0	1	2	2	0	1	0	0	0	6
<b>Total</b>	<b>2</b>	<b>0</b>	<b>1</b>	<b>4</b>	<b>3</b>	<b>58</b>	<b>231</b>	<b>501</b>	<b>279</b>	<b>68</b>	<b>13</b>	<b>3</b>	<b>4</b>	<b>1167</b>

# Chittenden County RPC

110 W Canal St  
Winooski, VT 05404

Site Code: RICH30  
Station ID: RICH30  
Location 1: Huntington Rd, Richmond VT  
Location 2: Between Grandview Dr & Pinetree Rd, 45 MPH  
Direction: A to B, None Specified

File Name: RICH30  
Date Printed: 7/22/2021  
Start Date: 7/15/2021  
End Date: 7/21/2021

7/18/2021	> 15 - 20	> 20 - 25	> 25 - 30	> 30 - 35	> 35 - 40	> 40 - 45	> 45 - 50	> 50 - 55	> 55 - 60	> 60 - 65	> 65 - 70	> 70 MPH	Total
Time	0 - 15 MPH	MPH	MPH	MPH	MPH	MPH	MPH	MPH	MPH	MPH	MPH	MPH	
12:00 AM	0	0	0	0	1	0	2	1	1	0	0	0	5
1:00	0	1	0	0	0	0	0	1	2	1	0	0	6
2:00	0	0	0	0	0	1	1	0	0	2	0	0	4
3:00	0	0	0	0	0	0	0	0	1	0	0	0	1
4:00	0	0	0	0	0	0	0	0	1	0	0	0	1
5:00	0	0	0	0	0	0	0	0	0	0	0	0	0
6:00	0	0	0	0	0	0	2	1	1	0	0	0	4
7:00	0	0	0	0	0	0	2	4	2	0	0	0	8
8:00	0	0	0	0	0	2	2	7	8	0	0	0	19
9:00	0	0	0	0	0	1	5	14	9	1	0	0	30
10:00	0	0	0	0	0	1	8	18	10	3	1	1	42
11:00	0	0	0	0	2	0	11	28	19	2	0	0	62
12:00 PM	0	0	0	1	0	3	11	38	26	6	0	1	86
1:00	0	0	0	0	0	1	6	32	24	5	2	0	70
2:00	0	0	0	0	0	4	11	36	21	8	0	0	80
3:00	0	0	0	0	0	2	8	26	22	4	0	0	62
4:00	0	0	0	1	0	1	20	29	33	6	0	0	91
5:00	0	0	0	0	0	1	10	28	26	12	1	1	79
6:00	0	0	2	0	0	1	8	29	12	5	0	1	58
7:00	0	0	0	0	0	1	18	34	16	3	3	1	76
8:00	0	0	0	0	0	0	12	11	11	4	1	0	39
9:00	0	0	0	0	0	1	6	11	6	2	2	0	28
10:00	0	0	0	0	0	0	2	4	3	1	0	0	10
11:00	0	0	0	0	0	0	0	1	4	1	1	0	7
<b>Total</b>	<b>0</b>	<b>1</b>	<b>2</b>	<b>2</b>	<b>3</b>	<b>20</b>	<b>145</b>	<b>353</b>	<b>258</b>	<b>66</b>	<b>11</b>	<b>5</b>	<b>868</b>

# Chittenden County RPC

110 W Canal St  
Winooski, VT 05404

Site Code: RICH30  
Station ID: RICH30  
Location 1: Huntington Rd, Richmond VT  
Location 2: Between Grandview Dr & Pinetree Rd, 45 MPH  
Direction: A to B, None Specified

File Name: RICH30  
Date Printed: 7/22/2021  
Start Date: 7/15/2021  
End Date: 7/21/2021

7/19/2021	> 15 - 20	> 20 - 25	> 25 - 30	> 30 - 35	> 35 - 40	> 40 - 45	> 45 - 50	> 50 - 55	> 55 - 60	> 60 - 65	> 65 - 70	> 70 MPH	Total
Time 0 - 15 MPH	MPH	MPH	MPH	MPH	MPH	MPH	MPH	MPH	MPH	MPH	MPH	MPH	
12:00 AM	0	0	1	0	0	0	1	0	0	0	0	0	2
1:00	0	0	0	0	0	0	0	2	1	0	1	1	5
2:00	0	0	0	0	0	0	0	0	1	0	0	0	1
3:00	0	0	0	0	0	0	0	0	0	0	0	0	0
4:00	0	0	0	0	0	1	1	0	1	0	0	0	3
5:00	0	0	0	0	0	0	1	1	2	0	1	0	5
6:00	0	0	0	0	0	0	2	8	9	2	0	0	21
7:00	0	0	1	1	0	0	5	11	8	3	0	0	29
8:00	0	0	0	0	1	1	18	31	16	1	0	0	69
9:00	0	0	0	0	0	7	10	15	7	0	0	0	39
10:00	0	0	0	0	0	1	17	18	7	1	2	0	46
11:00	0	0	0	0	0	11	23	30	8	2	0	0	74
12:00 PM	0	0	0	1	4	7	22	18	13	1	0	0	66
1:00	0	0	0	0	1	7	34	40	14	2	0	0	98
2:00	0	1	0	0	1	8	33	30	12	3	0	0	88
3:00	0	2	0	3	3	9	29	48	23	4	2	1	125
4:00	0	0	0	0	1	6	43	61	26	3	3	0	143
5:00	0	0	0	0	1	8	39	76	36	4	2	0	167
6:00	0	0	0	0	0	6	28	41	27	7	1	0	110
7:00	0	0	0	0	0	0	6	28	25	6	0	0	65
8:00	0	0	0	0	0	3	9	24	9	2	1	0	48
9:00	0	0	0	0	0	3	18	21	12	4	0	1	59
10:00	0	0	0	0	0	2	5	10	5	3	0	0	25
11:00	0	0	0	0	0	0	2	4	2	2	0	0	10
Total	0	3	2	5	12	80	346	517	264	50	13	3	1298

# Chittenden County RPC

110 W Canal St  
Winooski, VT 05404

Site Code: RICH30  
Station ID: RICH30  
Location 1: Huntington Rd, Richmond VT  
Location 2: Between Grandview Dr & Pinetree Rd, 45 MPH  
Direction: A to B, None Specified

File Name: RICH30  
Date Printed: 7/22/2021  
Start Date: 7/15/2021  
End Date: 7/21/2021

7/20/2021	> 15 - 20	> 20 - 25	> 25 - 30	> 30 - 35	> 35 - 40	> 40 - 45	> 45 - 50	> 50 - 55	> 55 - 60	> 60 - 65	> 65 - 70	> 70 MPH	Total	
Time	0 - 15 MPH	MPH	MPH	MPH	MPH	MPH	MPH	MPH	MPH	MPH	MPH	MPH		
12:00 AM	0	0	0	0	0	0	2	1	2	2	1	0	0	8
1:00	0	0	0	0	0	0	0	2	0	1	0	0	0	3
2:00	0	0	0	0	0	0	0	0	1	0	0	0	0	1
3:00	0	0	0	0	0	0	0	2	0	0	0	0	0	2
4:00	0	0	0	0	0	0	0	0	1	0	0	0	0	1
5:00	0	0	0	0	0	2	0	2	0	0	0	0	0	4
6:00	0	0	0	0	0	1	6	11	4	1	3	0	0	26
7:00	0	0	0	0	0	2	11	14	14	4	0	0	0	45
8:00	0	1	0	0	0	6	18	40	11	2	0	0	1	79
9:00	0	0	1	0	3	7	14	15	12	3	0	1	0	56
10:00	1	0	2	3	0	2	18	19	6	0	0	0	0	51
11:00	0	0	0	0	0	7	23	29	7	1	0	0	0	67
12:00 PM	0	0	0	0	1	4	13	28	23	3	0	0	0	72
1:00	0	0	0	1	3	8	20	33	24	2	0	0	1	92
2:00	0	1	0	0	1	7	21	31	19	7	0	0	0	87
3:00	0	0	1	0	2	3	39	48	21	3	2	0	0	119
4:00	0	0	0	1	1	5	35	71	43	5	1	0	1	163
5:00	0	0	0	1	1	4	46	58	43	6	1	0	0	160
6:00	0	0	0	0	2	3	18	47	23	12	2	0	0	107
7:00	0	2	1	0	0	9	39	22	7	3	0	0	0	83
8:00	0	0	0	0	0	0	4	27	10	4	0	0	0	45
9:00	0	0	0	0	0	2	7	7	2	0	1	1	0	20
10:00	0	0	0	0	0	7	5	8	2	1	0	0	0	23
11:00	0	0	0	0	0	1	0	3	6	2	1	0	0	13
Total	1	4	5	6	14	80	339	518	281	62	12	2	3	1327

# Chittenden County RPC

110 W Canal St  
Winooski, VT 05404

Site Code: RICH30  
Station ID: RICH30  
Location 1: Huntington Rd, Richmond VT  
Location 2: Between Grandview Dr & Pinetree Rd, 45 MPH  
Direction: A to B, None Specified

File Name: RICH30  
Date Printed: 7/22/2021  
Start Date: 7/15/2021  
End Date: 7/21/2021

7/21/2021	> 15 - 20	> 20 - 25	> 25 - 30	> 30 - 35	> 35 - 40	> 40 - 45	> 45 - 50	> 50 - 55	> 55 - 60	> 60 - 65	> 65 - 70	> 70 MPH	Total
Time	0 - 15 MPH	MPH	MPH	MPH	MPH	MPH	MPH	MPH	MPH	MPH	MPH	MPH	
12:00 AM	0	0	0	0	0	0	0	1	1	0	1	0	3
1:00	0	0	0	0	0	0	0	0	1	0	0	0	1
2:00	0	0	0	0	0	0	0	0	0	0	1	0	1
3:00	0	0	0	0	0	0	0	0	0	0	0	0	0
4:00	0	0	0	0	0	0	0	0	0	0	0	0	0
5:00	0	0	0	0	0	0	0	2	0	1	0	0	3
6:00	0	0	0	0	0	0	0	1	0	0	0	0	1
7:00	0	0	0	0	0	0	0	0	0	0	0	0	0
8:00	0	0	0	0	0	0	0	0	0	0	0	0	0
9:00	0	0	0	0	0	0	0	0	0	0	0	0	0
10:00	0	0	0	0	0	0	0	0	0	0	0	0	0
11:00	0	0	0	0	0	0	0	0	0	0	0	0	0
12:00 PM	0	0	0	0	0	0	0	0	0	0	0	0	0
1:00	0	0	0	0	0	0	0	0	0	0	0	0	0
2:00	0	0	0	0	0	0	0	0	0	0	0	0	0
3:00	0	0	0	0	0	0	0	0	0	0	0	0	0
4:00	0	0	0	0	0	0	0	0	0	0	0	0	0
5:00	0	0	0	0	0	0	0	0	0	0	0	0	0
6:00	0	0	0	0	0	0	0	0	0	0	0	0	0
7:00	0	0	0	0	0	0	0	0	0	0	0	0	0
8:00	0	0	0	0	0	0	0	0	0	0	0	0	0
9:00	0	0	0	0	0	0	0	0	0	0	0	0	0
10:00	0	0	0	0	0	0	0	0	0	0	0	0	0
11:00	0	0	0	0	0	0	0	0	0	0	0	0	0
Total	0	0	0	0	0	0	0	4	2	1	2	0	9
Grand Total	4	14	13	25	55	348	1675	3151	1837	413	97	18	7669

Stats	Percentile	15th	50th	85th	95th
	Speed	42.7	47.6	52.4	56.2
	Mean Speed (Average)	48.0			
	10 MPH Pace Speed	45-54			
	Number in Pace	4985			
	Percent in Pace	65.0%			
	Number > 45 MPH	5535			
	Percent > 45 MPH	72.2%			

# Chittenden County RPC

110 W Canal St  
Winooski, VT 05404

Site Code: RICH30  
Station ID: RICH30  
Location 1: Huntington Rd, Richmond VT  
Location 2: Between Grandview Dr & Pinetree Rd, 45 MPH  
Direction: B to A, None Specified

File Name: RICH30  
Date Printed: 7/22/2021  
Start Date: 7/15/2021  
End Date: 7/21/2021

7/15/2021	> 15 - 20	> 20 - 25	> 25 - 30	> 30 - 35	> 35 - 40	> 40 - 45	> 45 - 50	> 50 - 55	> 55 - 60	> 60 - 65	> 65 - 70	> 70 MPH	Total
Time 0 - 15 MPH	MPH	MPH	MPH	MPH	MPH	MPH	MPH	MPH	MPH	MPH	MPH	MPH	
12:00 AM	0	0	0	0	0	0	0	0	0	0	0	0	0
1:00	0	0	0	0	0	1	0	0	0	1	0	0	2
2:00	0	0	0	0	0	2	0	1	1	0	0	0	4
3:00	0	0	0	0	0	0	1	1	0	0	0	0	2
4:00	0	0	0	0	0	2	2	1	1	4	1	0	11
5:00	0	0	0	0	0	4	8	21	5	4	0	0	42
6:00	0	0	0	1	1	2	19	38	17	1	1	0	80
7:00	0	0	1	0	2	6	33	67	21	2	0	0	133
8:00	0	0	0	1	0	3	44	53	22	1	1	0	125
9:00	0	0	1	1	1	8	40	38	18	2	0	1	110
10:00	0	0	0	0	1	7	33	34	10	1	0	1	87
11:00	0	0	0	1	0	11	43	26	3	2	0	0	86
12:00 PM	0	3	0	1	1	13	25	36	13	2	1	0	95
1:00	0	0	0	0	2	8	39	36	6	0	0	0	91
2:00	0	0	2	0	0	7	39	26	9	2	0	0	85
3:00	0	1	0	0	0	2	42	48	17	3	1	0	115
4:00	0	0	0	0	1	3	34	62	11	5	0	0	116
5:00	0	0	0	0	0	18	36	35	6	2	0	0	97
6:00	0	0	0	0	0	16	39	41	11	1	1	0	109
7:00	0	0	1	0	0	10	30	29	10	0	0	0	80
8:00	0	0	0	0	2	12	17	16	1	1	0	0	49
9:00	0	0	0	1	0	7	22	13	2	1	0	0	46
10:00	0	0	0	0	0	1	4	4	0	0	0	0	9
11:00	0	0	0	0	0	0	2	2	0	1	0	0	5
Total	0	4	5	6	11	143	552	628	184	36	6	2	1579

# Chittenden County RPC

110 W Canal St  
Winooski, VT 05404

Site Code: RICH30  
Station ID: RICH30  
Location 1: Huntington Rd, Richmond VT  
Location 2: Between Grandview Dr & Pinetree Rd, 45 MPH  
Direction: B to A, None Specified

File Name: RICH30  
Date Printed: 7/22/2021  
Start Date: 7/15/2021  
End Date: 7/21/2021

7/16/2021	> 15 - 20	> 20 - 25	> 25 - 30	> 30 - 35	> 35 - 40	> 40 - 45	> 45 - 50	> 50 - 55	> 55 - 60	> 60 - 65	> 65 - 70	> 70 MPH	Total
Time 0 - 15 MPH	MPH	MPH	MPH	MPH	MPH	MPH	MPH	MPH	MPH	MPH	MPH	MPH	
12:00 AM	0	0	0	0	0	0	0	0	1	0	0	0	1
1:00	0	0	0	0	0	0	1	1	0	0	0	0	2
2:00	0	0	0	0	1	0	1	0	1	0	0	0	3
3:00	0	0	0	0	0	0	1	2	0	0	0	0	3
4:00	0	0	0	0	0	1	5	4	0	1	1	0	12
5:00	0	0	0	0	1	3	13	10	2	2	0	1	32
6:00	0	0	0	0	0	6	33	35	15	1	0	0	90
7:00	0	0	0	1	3	13	38	43	13	3	0	0	114
8:00	0	0	1	0	2	16	45	42	14	2	0	0	122
9:00	0	0	0	0	2	7	36	36	7	1	1	0	90
10:00	0	0	0	0	1	3	43	42	5	0	0	0	94
11:00	0	0	0	0	1	16	40	32	11	1	0	0	101
12:00 PM	0	0	0	0	3	15	38	26	7	1	0	0	91
1:00	0	0	0	1	0	9	41	26	4	0	0	0	81
2:00	0	0	1	1	1	13	33	25	5	2	0	0	81
3:00	0	0	0	0	1	10	52	42	12	1	0	0	119
4:00	0	0	2	1	0	10	42	38	11	4	0	0	108
5:00	0	0	0	0	3	6	28	30	13	2	1	0	84
6:00	0	0	1	1	1	6	24	26	10	3	0	0	72
7:00	0	0	0	0	1	2	15	16	2	0	0	0	36
8:00	0	0	0	0	0	4	12	13	2	0	0	0	33
9:00	0	0	0	0	1	8	16	12	0	0	0	0	37
10:00	0	0	0	0	1	7	8	2	0	0	0	0	18
11:00	0	0	0	0	0	0	2	4	3	3	0	0	12
<b>Total</b>	<b>0</b>	<b>0</b>	<b>5</b>	<b>5</b>	<b>23</b>	<b>155</b>	<b>567</b>	<b>507</b>	<b>137</b>	<b>28</b>	<b>3</b>	<b>1</b>	<b>1436</b>

# Chittenden County RPC

110 W Canal St  
Winooski, VT 05404

Site Code: RICH30  
Station ID: RICH30  
Location 1: Huntington Rd, Richmond VT  
Location 2: Between Grandview Dr & Pinetree Rd, 45 MPH  
Direction: B to A, None Specified

File Name: RICH30  
Date Printed: 7/22/2021  
Start Date: 7/15/2021  
End Date: 7/21/2021

7/17/2021		> 15 - 20	> 20 - 25	> 25 - 30	> 30 - 35	> 35 - 40	> 40 - 45	> 45 - 50	> 50 - 55	> 55 - 60	> 60 - 65	> 65 - 70	> 70 MPH	Total
Time	0 - 15 MPH	MPH	MPH	MPH	MPH	MPH	MPH	MPH	MPH	MPH	MPH	MPH		
12:00 AM	0	0	0	0	0	0	0	1	0	1	1	1	0	4
1:00	0	0	0	0	0	0	1	2	1	3	0	1	0	9
2:00	0	0	0	0	0	0	1	1	1	0	0	0	0	3
3:00	0	0	0	0	1	0	2	0	0	0	0	0	1	4
4:00	0	0	0	0	0	1	3	2	1	0	1	0	0	8
5:00	0	0	0	0	0	1	2	11	2	0	0	0	0	16
6:00	0	0	0	0	0	1	8	9	5	2	0	0	0	25
7:00	0	0	0	0	2	8	16	16	10	1	1	0	0	54
8:00	0	1	0	0	0	2	33	38	11	1	1	0	0	87
9:00	0	0	0	1	2	8	31	36	8	2	0	0	0	88
10:00	0	0	1	1	0	12	41	30	12	4	0	0	0	101
11:00	0	0	0	0	0	8	42	31	16	4	0	1	0	102
12:00 PM	0	0	0	1	10	12	57	44	6	0	0	0	0	130
1:00	0	0	1	1	1	8	35	26	8	0	1	0	0	81
2:00	0	1	0	0	4	14	31	21	7	1	0	0	0	79
3:00	0	0	1	0	1	11	37	22	3	2	2	0	0	79
4:00	0	0	0	1	1	2	35	35	10	3	0	0	0	87
5:00	0	0	0	0	1	7	27	15	6	1	0	0	0	57
6:00	0	0	0	0	0	3	20	23	4	1	0	0	0	51
7:00	0	0	0	0	0	10	12	17	3	2	0	0	0	44
8:00	0	0	0	0	0	6	11	4	2	1	0	0	0	24
9:00	0	0	0	0	1	6	11	3	4	2	2	0	0	29
10:00	0	0	0	1	3	8	5	4	4	0	0	0	0	25
11:00	0	0	0	0	2	5	4	3	0	0	0	0	0	14
<b>Total</b>	<b>0</b>	<b>2</b>	<b>3</b>	<b>6</b>	<b>29</b>	<b>135</b>	<b>466</b>	<b>393</b>	<b>125</b>	<b>28</b>	<b>10</b>	<b>2</b>	<b>2</b>	<b>1201</b>



# Chittenden County RPC

110 W Canal St  
Winooski, VT 05404

Site Code: RICH30  
Station ID: RICH30  
Location 1: Huntington Rd, Richmond VT  
Location 2: Between Grandview Dr & Pinetree Rd, 45 MPH  
Direction: B to A, None Specified

File Name: RICH30  
Date Printed: 7/22/2021  
Start Date: 7/15/2021  
End Date: 7/21/2021

7/18/2021	> 15 - 20	> 20 - 25	> 25 - 30	> 30 - 35	> 35 - 40	> 40 - 45	> 45 - 50	> 50 - 55	> 55 - 60	> 60 - 65	> 65 - 70	> 70 MPH	Total
Time 0 - 15 MPH	MPH	MPH	MPH	MPH	MPH	MPH	MPH	MPH	MPH	MPH	MPH	MPH	
12:00 AM	0	0	0	0	0	1	3	1	0	0	0	0	5
1:00	0	0	0	0	0	0	2	0	0	1	0	0	3
2:00	0	0	0	0	0	0	0	0	0	0	0	0	0
3:00	0	0	0	0	1	1	1	0	0	0	0	0	3
4:00	0	0	0	0	0	0	3	1	0	0	0	1	5
5:00	0	0	0	0	0	3	1	2	1	0	0	0	7
6:00	0	0	0	0	0	3	4	12	2	0	0	0	21
7:00	0	0	0	0	0	3	14	12	5	0	0	0	34
8:00	0	0	0	0	0	4	19	19	2	1	1	0	46
9:00	0	0	1	0	1	4	28	24	9	0	0	0	67
10:00	0	0	0	1	1	3	34	27	10	1	1	0	78
11:00	0	0	0	0	0	2	38	39	7	0	0	0	86
12:00 PM	0	0	0	0	1	1	22	31	7	0	0	0	62
1:00	0	0	0	0	0	13	23	23	3	3	0	0	65
2:00	0	0	1	0	0	2	31	31	7	0	0	0	72
3:00	0	0	0	0	2	5	34	17	9	1	0	0	68
4:00	0	1	0	0	2	7	43	23	5	2	1	0	84
5:00	0	0	0	0	0	2	17	19	11	2	0	0	51
6:00	0	0	0	0	1	2	17	21	6	0	0	0	47
7:00	0	0	0	1	2	4	5	9	3	1	0	0	25
8:00	0	0	0	0	1	5	6	7	2	0	0	0	21
9:00	0	0	0	0	0	2	1	1	2	0	0	0	6
10:00	0	0	0	0	0	0	0	0	1	1	0	0	2
11:00	0	0	0	0	0	0	0	2	0	1	0	0	3
Total	0	1	2	2	12	67	346	321	92	14	3	1	861

# Chittenden County RPC

110 W Canal St  
Winooski, VT 05404

Site Code: RICH30  
Station ID: RICH30  
Location 1: Huntington Rd, Richmond VT  
Location 2: Between Grandview Dr & Pinetree Rd, 45 MPH  
Direction: B to A, None Specified

File Name: RICH30  
Date Printed: 7/22/2021  
Start Date: 7/15/2021  
End Date: 7/21/2021

7/19/2021	> 15 - 20	> 20 - 25	> 25 - 30	> 30 - 35	> 35 - 40	> 40 - 45	> 45 - 50	> 50 - 55	> 55 - 60	> 60 - 65	> 65 - 70	> 70 MPH	Total
Time 0 - 15 MPH	MPH	MPH	MPH	MPH	MPH	MPH	MPH	MPH	MPH	MPH	MPH	MPH	
12:00 AM	0	0	0	0	0	1	0	1	0	1	0	0	3
1:00	0	0	0	0	0	0	1	0	0	0	0	0	1
2:00	0	0	0	0	0	2	0	2	0	0	0	0	4
3:00	0	0	0	0	0	0	1	1	1	0	0	0	3
4:00	0	0	0	0	0	2	4	3	2	0	0	0	11
5:00	0	0	0	0	1	6	14	14	4	2	1	0	42
6:00	0	0	0	1	1	3	17	31	22	1	0	0	76
7:00	0	0	0	0	2	16	62	50	9	2	0	0	141
8:00	0	1	0	0	0	10	46	33	14	4	1	0	109
9:00	0	0	0	0	6	15	43	33	5	1	0	0	103
10:00	0	0	0	0	1	10	30	28	4	0	1	0	74
11:00	0	0	0	1	1	3	25	33	2	2	0	1	68
12:00 PM	0	1	0	0	2	18	30	30	7	0	0	0	88
1:00	0	0	0	0	1	6	28	34	10	2	0	0	81
2:00	0	0	0	0	0	8	30	29	7	0	1	0	75
3:00	0	0	0	1	1	5	25	38	8	3	0	0	81
4:00	0	0	0	0	2	13	46	35	8	3	1	0	108
5:00	0	0	0	0	0	9	29	30	15	1	0	0	85
6:00	0	0	0	0	0	6	15	28	12	1	0	0	62
7:00	0	0	0	0	0	4	13	6	5	1	0	0	29
8:00	0	0	0	2	0	3	7	12	1	1	0	0	26
9:00	0	0	0	0	1	1	3	7	0	0	0	0	12
10:00	0	0	0	1	1	2	4	2	0	1	0	0	11
11:00	0	0	0	0	0	0	0	1	1	0	0	0	2
Total	0	2	0	6	20	143	473	481	137	26	5	1	1295

# Chittenden County RPC

110 W Canal St  
Winooski, VT 05404

Site Code: RICH30  
Station ID: RICH30  
Location 1: Huntington Rd, Richmond VT  
Location 2: Between Grandview Dr & Pinetree Rd, 45 MPH  
Direction: B to A, None Specified

File Name: RICH30  
Date Printed: 7/22/2021  
Start Date: 7/15/2021  
End Date: 7/21/2021

7/20/2021	> 15 - 20	> 20 - 25	> 25 - 30	> 30 - 35	> 35 - 40	> 40 - 45	> 45 - 50	> 50 - 55	> 55 - 60	> 60 - 65	> 65 - 70	> 70 MPH	Total
Time	0 - 15 MPH	MPH	MPH	MPH	MPH	MPH	MPH	MPH	MPH	MPH	MPH	MPH	
12:00 AM	0	0	0	0	0	0	2	0	1	0	1	0	4
1:00	0	0	0	0	0	0	0	0	0	0	0	0	0
2:00	0	0	0	0	1	1	1	0	1	0	0	0	4
3:00	0	0	0	0	0	0	0	2	0	0	0	0	2
4:00	0	0	0	0	0	3	1	3	4	1	1	1	14
5:00	0	0	0	0	0	4	14	19	4	2	1	0	44
6:00	0	0	0	2	0	1	23	47	16	1	2	0	92
7:00	0	0	0	0	1	12	56	64	17	2	0	0	152
8:00	0	0	1	0	1	8	54	48	12	3	0	0	127
9:00	0	1	1	0	1	9	54	43	6	0	0	0	115
10:00	0	0	0	0	2	14	39	23	4	1	0	1	84
11:00	0	0	0	0	1	11	36	25	7	1	0	0	81
12:00 PM	0	0	0	1	0	9	30	39	8	2	0	0	89
1:00	0	0	0	0	0	9	28	28	7	2	0	0	74
2:00	0	0	0	0	1	7	39	32	5	0	0	0	85
3:00	0	0	0	0	1	10	37	42	12	0	0	0	103
4:00	0	2	0	0	1	7	46	26	16	2	1	0	101
5:00	0	0	0	0	2	3	43	32	11	1	0	0	92
6:00	0	0	0	0	3	9	18	27	8	0	1	0	66
7:00	0	0	0	2	10	10	15	10	0	0	0	0	47
8:00	0	0	0	0	0	2	3	1	0	0	0	0	6
9:00	0	0	0	0	0	0	2	0	1	1	0	0	4
10:00	0	0	0	0	0	1	4	1	0	1	0	0	7
11:00	0	0	0	0	0	0	0	1	0	0	0	0	1
Total	0	3	2	5	25	130	545	513	140	20	7	2	1394

# Chittenden County RPC

110 W Canal St  
Winooski, VT 05404

Site Code: RICH30  
Station ID: RICH30  
Location 1: Huntington Rd, Richmond VT  
Location 2: Between Grandview Dr & Pinetree Rd, 45 MPH  
Direction: B to A, None Specified

File Name: RICH30  
Date Printed: 7/22/2021  
Start Date: 7/15/2021  
End Date: 7/21/2021

7/21/2021	> 15 - 20	> 20 - 25	> 25 - 30	> 30 - 35	> 35 - 40	> 40 - 45	> 45 - 50	> 50 - 55	> 55 - 60	> 60 - 65	> 65 - 70	> 70 MPH	Total
Time	0 - 15 MPH	MPH	MPH	MPH	MPH	MPH	MPH	MPH	MPH	MPH	MPH	MPH	
12:00 AM	0	0	0	0	0	0	0	0	0	0	0	0	0
1:00	0	0	0	0	0	0	0	0	0	0	0	0	0
2:00	0	0	0	0	0	0	0	0	0	0	0	0	0
3:00	0	0	0	0	0	0	0	0	0	0	0	0	0
4:00	0	0	0	0	0	0	0	0	0	0	0	0	0
5:00	1	0	0	0	0	0	0	2	0	0	0	0	3
6:00	0	0	0	0	0	0	1	0	0	0	0	0	1
7:00	0	0	0	0	0	0	0	0	0	0	0	0	0
8:00	0	0	0	0	0	0	0	0	0	0	0	0	0
9:00	0	0	0	0	0	0	0	0	0	0	0	0	0
10:00	0	0	0	0	0	0	0	0	0	0	0	0	0
11:00	0	0	0	0	0	0	0	0	0	0	0	0	0
12:00 PM	0	0	0	0	0	0	0	0	0	0	0	0	0
1:00	0	0	0	0	0	0	0	0	0	0	0	0	0
2:00	0	0	0	0	0	0	0	0	0	0	0	0	0
3:00	0	0	0	0	0	0	0	0	0	0	0	0	0
4:00	0	0	0	0	0	0	0	0	0	0	0	0	0
5:00	0	0	0	0	0	0	0	0	0	0	0	0	0
6:00	0	0	0	0	0	0	0	0	0	0	0	0	0
7:00	0	0	0	0	0	0	0	0	0	0	0	0	0
8:00	0	0	0	0	0	0	0	0	0	0	0	0	0
9:00	0	0	0	0	0	0	0	0	0	0	0	0	0
10:00	0	0	0	0	0	0	0	0	0	0	0	0	0
11:00	0	0	0	0	0	0	0	0	0	0	0	0	0
Total	1	0	0	0	0	0	1	2	0	0	0	0	4
Grand Total	1	12	17	30	120	773	2950	2845	815	152	34	9	7770

Stats	Percentile	15th	50th	85th	95th
	Speed	40.5	44.9	49.5	53
	Mean Speed (Average)	45.2			
	10 MPH Pace Speed	40-49			
	Number in Pace	5754			
	Percent in Pace	74.1%			
	Number > 45 MPH	3867			
	Percent > 45 MPH	49.8%			

# Chittenden County RPC

110 W Canal St  
Winooski, VT 05404

Site Code: RICH30  
Station ID: RICH30  
Location 1: Huntington Rd, Richmond VT  
Location 2: Between Grandview Dr & Pinetree Rd, 45 MPH  
Direction: Combined

File Name: RICH30  
Date Printed: 7/22/2021  
Start Date: 7/15/2021  
End Date: 7/21/2021

7/15/2021	> 15 - 20	> 20 - 25	> 25 - 30	> 30 - 35	> 35 - 40	> 40 - 45	> 45 - 50	> 50 - 55	> 55 - 60	> 60 - 65	> 65 - 70	> 70 MPH	Total
Time 0 - 15 MPH	MPH	MPH	MPH	MPH	MPH	MPH	MPH	MPH	MPH	MPH	MPH	MPH	
12:00 AM	0	0	0	0	0	0	3	2	2	1	0	0	8
1:00	0	0	0	0	0	2	0	0	0	1	1	0	4
2:00	0	0	0	0	0	2	0	2	2	0	0	0	6
3:00	0	0	0	0	0	0	1	2	0	0	0	0	3
4:00	0	0	0	0	0	2	2	1	1	5	1	0	12
5:00	0	0	0	1	0	4	8	23	5	5	0	0	46
6:00	0	0	0	1	1	3	21	45	28	3	2	0	104
7:00	0	0	1	0	2	9	42	89	31	4	2	0	181
8:00	0	0	1	1	0	5	51	84	42	7	2	0	193
9:00	0	0	1	1	2	10	52	64	38	5	1	1	175
10:00	0	0	0	0	2	8	52	73	24	9	0	1	169
11:00	0	0	0	1	2	15	62	54	18	6	2	0	160
12:00 PM	1	4	0	2	2	15	39	74	31	6	1	0	175
1:00	0	1	0	0	3	14	78	81	28	7	0	0	213
2:00	0	0	2	0	2	16	58	62	29	6	0	1	176
3:00	0	1	0	0	1	7	72	114	46	9	1	1	253
4:00	0	0	0	0	2	9	76	148	83	12	3	0	333
5:00	0	1	0	0	0	24	68	132	53	8	2	0	289
6:00	0	0	0	0	0	19	55	98	40	8	5	0	225
7:00	0	0	1	0	0	11	40	62	25	5	0	0	144
8:00	0	1	0	0	2	14	33	45	16	8	1	0	120
9:00	0	0	0	1	0	7	35	38	19	3	0	0	103
10:00	0	0	0	0	0	1	14	15	7	1	0	0	38
11:00	0	0	0	0	0	1	4	5	4	2	2	0	19
Total	1	8	6	8	21	198	866	1313	572	121	26	4	3149

# Chittenden County RPC

110 W Canal St  
Winooski, VT 05404

Site Code: RICH30  
Station ID: RICH30  
Location 1: Huntington Rd, Richmond VT  
Location 2: Between Grandview Dr & Pinetree Rd, 45 MPH  
Direction: Combined

File Name: RICH30  
Date Printed: 7/22/2021  
Start Date: 7/15/2021  
End Date: 7/21/2021

7/16/2021	> 15 - 20	> 20 - 25	> 25 - 30	> 30 - 35	> 35 - 40	> 40 - 45	> 45 - 50	> 50 - 55	> 55 - 60	> 60 - 65	> 65 - 70	> 70 MPH	Total
Time	0 - 15 MPH	MPH	MPH	MPH	MPH	MPH	MPH	MPH	MPH	MPH	MPH	MPH	
12:00 AM	0	1	0	0	0	0	2	1	1	2	1	0	8
1:00	0	0	0	0	0	0	1	1	0	1	1	0	4
2:00	0	0	0	0	1	0	1	0	3	0	0	0	5
3:00	0	0	0	0	0	0	1	2	0	0	0	0	3
4:00	0	0	0	0	0	1	5	4	1	1	1	0	13
5:00	0	0	0	0	1	3	15	12	2	2	0	1	36
6:00	0	0	0	0	0	7	35	42	18	3	2	0	107
7:00	0	0	0	2	4	15	46	49	26	3	2	0	147
8:00	0	0	1	0	2	22	54	66	30	8	1	0	184
9:00	0	0	0	2	2	10	51	65	20	2	1	0	153
10:00	0	0	0	0	1	5	51	65	18	3	2	0	145
11:00	0	0	0	0	3	23	61	54	28	5	0	0	174
12:00 PM	0	0	0	0	3	20	70	57	26	4	2	0	183
1:00	0	0	0	1	4	11	59	68	21	4	1	0	169
2:00	0	1	1	1	5	19	48	56	27	10	2	0	170
3:00	0	0	0	1	1	16	85	87	47	9	1	1	250
4:00	0	0	2	2	1	14	77	111	44	13	0	0	264
5:00	0	0	1	0	3	9	54	113	63	7	5	0	257
6:00	0	0	1	1	1	11	45	84	45	10	2	0	202
7:00	0	0	0	1	2	4	28	44	24	4	3	0	110
8:00	0	0	0	0	0	5	22	29	18	6	0	2	84
9:00	0	0	1	0	1	8	32	43	17	2	1	0	105
10:00	0	0	0	0	1	7	15	12	9	6	1	0	51
11:00	0	0	0	0	0	0	9	15	14	4	0	0	42
Total	0	2	7	11	36	210	867	1080	502	109	29	4	2866

# Chittenden County RPC

110 W Canal St  
Winooski, VT 05404

Site Code: RICH30  
Station ID: RICH30  
Location 1: Huntington Rd, Richmond VT  
Location 2: Between Grandview Dr & Pinetree Rd, 45 MPH  
Direction: Combined

File Name: RICH30  
Date Printed: 7/22/2021  
Start Date: 7/15/2021  
End Date: 7/21/2021

7/17/2021	> 15 - 20	> 20 - 25	> 25 - 30	> 30 - 35	> 35 - 40	> 40 - 45	> 45 - 50	> 50 - 55	> 55 - 60	> 60 - 65	> 65 - 70	> 70 MPH	Total
Time 0 - 15 MPH	MPH	MPH	MPH	MPH	MPH	MPH	MPH	MPH	MPH	MPH	MPH	MPH	
12:00 AM	0	0	0	0	0	0	1	3	3	2	1	0	10
1:00	0	0	0	0	0	1	3	1	3	0	1	0	10
2:00	0	0	0	0	0	1	2	1	3	0	0	0	7
3:00	0	0	0	0	1	1	3	0	0	0	0	0	7
4:00	0	0	0	0	0	1	3	2	2	2	1	0	11
5:00	0	0	0	0	0	1	2	11	3	0	0	0	17
6:00	0	0	0	0	0	1	10	15	9	2	0	0	37
7:00	0	0	0	0	2	9	19	25	13	1	1	0	70
8:00	0	1	0	0	0	3	40	52	24	4	1	2	127
9:00	0	0	0	1	3	10	46	73	20	5	0	0	158
10:00	1	0	1	1	0	15	60	61	26	6	3	0	174
11:00	0	0	0	0	0	13	58	74	40	12	0	1	198
12:00 PM	0	0	0	1	10	23	77	94	27	3	0	0	235
1:00	1	0	1	2	2	18	64	73	34	7	2	1	205
2:00	0	1	0	0	4	18	50	69	34	8	1	0	186
3:00	0	0	1	0	1	13	62	71	34	8	4	0	194
4:00	0	0	1	3	1	4	46	79	43	10	2	0	189
5:00	0	0	0	0	2	11	38	47	21	3	1	0	123
6:00	0	0	0	1	0	4	27	48	19	3	0	0	103
7:00	0	0	0	0	0	12	24	34	16	6	1	0	93
8:00	0	0	0	0	0	7	27	31	9	5	0	0	79
9:00	0	0	0	0	1	12	21	15	12	3	3	0	68
10:00	0	0	0	1	3	9	9	12	9	4	0	0	47
11:00	0	0	0	0	2	6	6	5	0	1	0	0	20
Total	2	2	4	10	32	193	697	894	404	96	23	5	2368

# Chittenden County RPC

110 W Canal St  
Winooski, VT 05404

Site Code: RICH30  
Station ID: RICH30  
Location 1: Huntington Rd, Richmond VT  
Location 2: Between Grandview Dr & Pinetree Rd, 45 MPH  
Direction: Combined

File Name: RICH30  
Date Printed: 7/22/2021  
Start Date: 7/15/2021  
End Date: 7/21/2021

7/18/2021	> 15 - 20	> 20 - 25	> 25 - 30	> 30 - 35	> 35 - 40	> 40 - 45	> 45 - 50	> 50 - 55	> 55 - 60	> 60 - 65	> 65 - 70	> 70 MPH	Total
Time	0 - 15 MPH	MPH	MPH	MPH	MPH	MPH	MPH	MPH	MPH	MPH	MPH	MPH	
12:00 AM	0	0	0	0	1	1	5	2	1	0	0	0	10
1:00	0	1	0	0	0	0	2	1	2	2	0	0	9
2:00	0	0	0	0	0	1	1	0	0	2	0	0	4
3:00	0	0	0	0	1	1	1	0	1	0	0	0	4
4:00	0	0	0	0	0	0	3	1	1	0	0	1	6
5:00	0	0	0	0	0	3	1	2	1	0	0	0	7
6:00	0	0	0	0	0	3	6	13	3	0	0	0	25
7:00	0	0	0	0	0	3	16	16	7	0	0	0	42
8:00	0	0	0	0	0	6	21	26	10	1	1	0	65
9:00	0	0	1	0	1	5	33	38	18	1	0	0	97
10:00	0	0	0	1	1	4	42	45	20	4	2	1	120
11:00	0	0	0	0	2	2	49	67	26	2	0	0	148
12:00 PM	0	0	0	1	1	4	33	69	33	6	0	1	148
1:00	0	0	0	0	0	14	29	55	27	8	2	0	135
2:00	0	0	1	0	0	6	42	67	28	8	0	0	152
3:00	0	0	0	0	2	7	42	43	31	5	0	0	130
4:00	0	1	0	1	2	8	63	52	38	8	1	0	175
5:00	0	0	0	0	0	3	27	47	37	14	1	1	130
6:00	0	0	2	0	1	3	25	50	18	5	0	1	105
7:00	0	0	0	1	2	5	23	43	19	4	3	1	101
8:00	0	0	0	0	1	5	18	18	13	4	1	0	60
9:00	0	0	0	0	0	3	7	12	8	2	2	0	34
10:00	0	0	0	0	0	0	2	4	4	2	0	0	12
11:00	0	0	0	0	0	0	0	3	4	2	1	0	10
Total	0	2	4	4	15	87	491	674	350	80	14	6	1729



# Chittenden County RPC

110 W Canal St  
Winooski, VT 05404

Site Code: RICH30  
Station ID: RICH30  
Location 1: Huntington Rd, Richmond VT  
Location 2: Between Grandview Dr & Pinetree Rd, 45 MPH  
Direction: Combined

File Name: RICH30  
Date Printed: 7/22/2021  
Start Date: 7/15/2021  
End Date: 7/21/2021

7/19/2021	> 15 - 20	> 20 - 25	> 25 - 30	> 30 - 35	> 35 - 40	> 40 - 45	> 45 - 50	> 50 - 55	> 55 - 60	> 60 - 65	> 65 - 70	> 70 MPH	Total
Time 0 - 15 MPH	MPH	MPH	MPH	MPH	MPH	MPH	MPH	MPH	MPH	MPH	MPH		
12:00 AM	0	0	1	0	0	1	1	1	0	1	0	0	5
1:00	0	0	0	0	0	0	1	2	1	0	1	1	6
2:00	0	0	0	0	0	2	0	2	1	0	0	0	5
3:00	0	0	0	0	0	0	1	1	1	0	0	0	3
4:00	0	0	0	0	0	3	5	3	3	0	0	0	14
5:00	0	0	0	0	1	6	15	15	6	2	2	0	47
6:00	0	0	0	1	1	3	19	39	31	3	0	0	97
7:00	0	0	1	1	2	16	67	61	17	5	0	0	170
8:00	0	1	0	0	1	11	64	64	30	5	1	0	178
9:00	0	0	0	0	6	22	53	48	12	1	0	0	142
10:00	0	0	0	0	1	11	47	46	11	1	3	0	120
11:00	0	0	0	1	1	14	48	63	10	4	0	1	142
12:00 PM	0	1	0	1	6	25	52	48	20	1	0	0	154
1:00	0	0	0	0	2	13	62	74	24	4	0	0	179
2:00	0	1	0	0	1	16	63	59	19	3	1	0	163
3:00	0	2	0	4	4	14	54	86	31	7	2	1	206
4:00	0	0	0	0	3	19	89	96	34	6	4	0	251
5:00	0	0	0	0	1	17	68	106	51	5	2	0	252
6:00	0	0	0	0	0	12	43	69	39	8	1	0	172
7:00	0	0	0	0	0	4	19	34	30	7	0	0	94
8:00	0	0	0	2	0	6	16	36	10	3	1	0	74
9:00	0	0	0	0	1	4	21	28	12	4	0	1	71
10:00	0	0	0	1	1	4	9	12	5	4	0	0	36
11:00	0	0	0	0	0	0	2	5	3	2	0	0	12
Total	0	5	2	11	32	223	819	998	401	76	18	4	2593

# Chittenden County RPC

110 W Canal St  
Winooski, VT 05404

Site Code: RICH30  
Station ID: RICH30  
Location 1: Huntington Rd, Richmond VT  
Location 2: Between Grandview Dr & Pinetree Rd, 45 MPH  
Direction: Combined

File Name: RICH30  
Date Printed: 7/22/2021  
Start Date: 7/15/2021  
End Date: 7/21/2021

7/20/2021	> 15 - 20	> 20 - 25	> 25 - 30	> 30 - 35	> 35 - 40	> 40 - 45	> 45 - 50	> 50 - 55	> 55 - 60	> 60 - 65	> 65 - 70	> 70 MPH	Total
Time 0 - 15 MPH	MPH	MPH	MPH	MPH	MPH	MPH	MPH	MPH	MPH	MPH	MPH	MPH	
12:00 AM	0	0	0	0	0	4	1	3	2	2	0	0	12
1:00	0	0	0	0	0	0	2	0	1	0	0	0	3
2:00	0	0	0	1	1	1	0	2	0	0	0	0	5
3:00	0	0	0	0	0	0	4	0	0	0	0	0	4
4:00	0	0	0	0	3	1	3	5	1	1	1	0	15
5:00	0	0	0	0	6	14	21	4	2	1	0	0	48
6:00	0	0	2	0	2	29	58	20	2	5	0	0	118
7:00	0	0	0	1	14	67	78	31	6	0	0	0	197
8:00	0	1	1	0	14	72	88	23	5	0	0	1	206
9:00	0	1	2	0	4	16	68	58	18	3	0	1	171
10:00	1	0	2	3	2	16	57	42	10	1	0	1	135
11:00	0	0	0	0	1	18	59	54	14	2	0	0	148
12:00 PM	0	0	0	1	1	13	43	67	31	5	0	0	161
1:00	0	0	0	1	3	17	48	61	31	4	0	0	166
2:00	0	1	0	0	2	14	60	63	24	7	0	0	172
3:00	0	0	1	0	3	13	76	90	33	3	2	0	222
4:00	0	2	0	1	2	12	81	97	59	7	2	0	264
5:00	0	0	0	1	3	7	89	90	54	7	1	0	252
6:00	0	0	0	0	5	12	36	74	31	12	3	0	173
7:00	0	2	1	2	10	19	54	32	7	3	0	0	130
8:00	0	0	0	0	0	2	7	28	10	4	0	0	51
9:00	0	0	0	0	0	2	9	7	3	1	1	0	24
10:00	0	0	0	0	0	8	9	9	2	2	0	0	30
11:00	0	0	0	0	0	1	0	4	6	2	1	0	14
<b>Total</b>	<b>1</b>	<b>7</b>	<b>7</b>	<b>11</b>	<b>39</b>	<b>210</b>	<b>884</b>	<b>1031</b>	<b>421</b>	<b>82</b>	<b>19</b>	<b>4</b>	<b>2721</b>

# Chittenden County RPC

110 W Canal St  
Winooski, VT 05404

Site Code: RICH30  
Station ID: RICH30  
Location 1: Huntington Rd, Richmond VT  
Location 2: Between Grandview Dr & Pinetree Rd, 45 MPH  
Direction: Combined

File Name: RICH30  
Date Printed: 7/22/2021  
Start Date: 7/15/2021  
End Date: 7/21/2021

7/21/2021	> 15 - 20	> 20 - 25	> 25 - 30	> 30 - 35	> 35 - 40	> 40 - 45	> 45 - 50	> 50 - 55	> 55 - 60	> 60 - 65	> 65 - 70	> 70 MPH	Total	
Time	0 - 15 MPH	MPH	MPH	MPH	MPH	MPH	MPH	MPH	MPH	MPH	MPH	MPH		
12:00 AM	0	0	0	0	0	0	0	1	1	0	1	0	3	
1:00	0	0	0	0	0	0	0	0	1	0	0	0	1	
2:00	0	0	0	0	0	0	0	0	0	0	1	0	1	
3:00	0	0	0	0	0	0	0	0	0	0	0	0	0	
4:00	0	0	0	0	0	0	0	0	0	0	0	0	0	
5:00	1	0	0	0	0	0	0	4	0	1	0	0	6	
6:00	0	0	0	0	0	0	1	1	0	0	0	0	2	
7:00	0	0	0	0	0	0	0	0	0	0	0	0	0	
8:00	0	0	0	0	0	0	0	0	0	0	0	0	0	
9:00	0	0	0	0	0	0	0	0	0	0	0	0	0	
10:00	0	0	0	0	0	0	0	0	0	0	0	0	0	
11:00	0	0	0	0	0	0	0	0	0	0	0	0	0	
12:00 PM	0	0	0	0	0	0	0	0	0	0	0	0	0	
1:00	0	0	0	0	0	0	0	0	0	0	0	0	0	
2:00	0	0	0	0	0	0	0	0	0	0	0	0	0	
3:00	0	0	0	0	0	0	0	0	0	0	0	0	0	
4:00	0	0	0	0	0	0	0	0	0	0	0	0	0	
5:00	0	0	0	0	0	0	0	0	0	0	0	0	0	
6:00	0	0	0	0	0	0	0	0	0	0	0	0	0	
7:00	0	0	0	0	0	0	0	0	0	0	0	0	0	
8:00	0	0	0	0	0	0	0	0	0	0	0	0	0	
9:00	0	0	0	0	0	0	0	0	0	0	0	0	0	
10:00	0	0	0	0	0	0	0	0	0	0	0	0	0	
11:00	0	0	0	0	0	0	0	0	0	0	0	0	0	
Total	1	0	0	0	0	0	1	6	2	1	2	0	13	
Grand Total	5	26	30	55	175	1121	4625	5996	2652	565	131	27	31	15439

Stats	Percentile	15th	50th	85th	95th
	Speed	41.4	46.2	51.2	54.8
	Mean Speed (Average)	46.6			
	10 MPH Pace Speed	40-49			
	Number in Pace	10524			
	Percent in Pace	68.2%			
	Number > 45 MPH	9402			
	Percent > 45 MPH	60.9%			

# Chittenden County RPC

110 W Canal St  
Winooski, VT 05404

Site Code: RICH21  
Station ID:  
Location 1: Kenyon Rd, Richmond VT  
Location 2: On Utility pole, 35 MPH  
Direction: South, A to B

File Name: RICH21\_TRAX  
Date Printed: 6/28/2021  
Start Date: 6/17/2021  
End Date: 6/21/2021

6/17/2021	> 15 - 20	> 20 - 25	> 25 - 30	> 30 - 35	> 35 - 40	> 40 - 45	> 45 - 50	> 50 - 55	> 55 - 60	> 60 - 65	> 65 - 70	> 70 MPH	Total
Time	0 - 15 MPH	MPH	MPH	MPH	MPH	MPH	MPH	MPH	MPH	MPH	MPH	MPH	
12:00 AM	*	*	*	*	*	*	*	*	*	*	*	*	0
1:00	*	*	*	*	*	*	*	*	*	*	*	*	0
2:00	*	*	*	*	*	*	*	*	*	*	*	*	0
3:00	*	*	*	*	*	*	*	*	*	*	*	*	0
4:00	*	*	*	*	*	*	*	*	*	*	*	*	0
5:00	*	*	*	*	*	*	*	*	*	*	*	*	0
6:00	*	*	*	*	*	*	*	*	*	*	*	*	0
7:00	*	*	*	*	*	*	*	*	*	*	*	*	0
8:00	*	*	*	*	*	*	*	*	*	*	*	*	0
9:00	*	*	*	*	*	*	*	*	*	*	*	*	0
10:00	*	*	*	*	*	*	*	*	*	*	*	*	0
11:00	*	*	*	*	*	*	*	*	*	*	*	*	0
12:00 PM	*	*	*	*	*	*	*	*	*	*	*	*	0
1:00	*	*	*	*	*	*	*	*	*	*	*	*	0
2:00	*	*	*	*	*	*	*	*	*	*	*	*	0
3:00	1	0	4	2	12	7	4	0	0	0	0	0	30
4:00	2	0	1	12	14	3	0	0	0	0	0	0	34
5:00	2	1	0	10	22	6	1	0	0	0	0	0	44
6:00	0	0	1	5	9	4	0	0	0	0	0	0	19
7:00	0	0	1	4	5	0	1	0	0	0	0	1	13
8:00	2	0	3	4	3	0	0	0	0	0	0	1	13
9:00	1	0	2	1	1	1	1	0	0	0	0	0	7
10:00	0	0	0	0	3	0	1	0	0	0	0	0	4
11:00	0	0	0	1	1	0	0	1	0	0	0	0	3
<b>Total</b>	<b>8</b>	<b>1</b>	<b>12</b>	<b>39</b>	<b>70</b>	<b>21</b>	<b>8</b>	<b>1</b>	<b>0</b>	<b>0</b>	<b>0</b>	<b>2</b>	<b>167</b>

# Chittenden County RPC

110 W Canal St  
Winooski, VT 05404

Site Code: RICH21  
Station ID:  
Location 1: Kenyon Rd, Richmond VT  
Location 2: On Utility pole, 35 MPH  
Direction: South, A to B

File Name: RICH21\_TRAX  
Date Printed: 6/28/2021  
Start Date: 6/17/2021  
End Date: 6/21/2021

6/18/2021	> 15 - 20	> 20 - 25	> 25 - 30	> 30 - 35	> 35 - 40	> 40 - 45	> 45 - 50	> 50 - 55	> 55 - 60	> 60 - 65	> 65 - 70	> 70 MPH	Total
Time	0 - 15 MPH	MPH	MPH	MPH	MPH	MPH	MPH	MPH	MPH	MPH	MPH	MPH	
12:00 AM	0	0	1	0	0	0	0	0	0	0	0	0	1
1:00	0	0	0	0	0	0	0	0	0	0	0	0	0
2:00	0	0	0	0	0	0	0	0	0	0	0	0	0
3:00	0	0	0	0	1	0	0	0	0	0	0	0	1
4:00	0	0	0	0	0	1	0	0	0	0	0	0	1
5:00	0	0	0	3	3	2	0	0	0	0	0	0	8
6:00	0	0	0	3	3	3	2	0	0	0	0	0	11
7:00	2	0	1	6	16	9	5	0	0	0	0	0	39
8:00	1	0	0	7	13	5	1	0	0	0	0	0	27
9:00	1	0	0	4	14	6	1	0	0	0	0	0	26
10:00	0	0	3	6	8	2	1	0	0	0	0	0	20
11:00	0	0	0	6	13	5	0	1	0	0	0	0	25
12:00 PM	1	1	2	7	9	3	0	0	0	0	0	0	23
1:00	0	1	3	16	14	3	0	0	0	0	0	0	37
2:00	1	1	2	11	13	2	0	0	0	0	0	0	31
3:00	0	3	2	11	17	4	3	0	0	1	0	2	43
4:00	4	4	7	13	16	5	2	0	1	0	0	1	54
5:00	1	2	0	13	10	3	2	0	0	0	0	0	31
6:00	0	0	1	5	10	7	1	0	0	0	0	0	24
7:00	0	0	0	2	3	6	2	0	0	0	0	0	13
8:00	0	0	1	4	2	3	1	0	0	0	0	0	11
9:00	1	0	2	5	4	1	1	0	0	0	0	0	14
10:00	0	0	0	2	1	0	0	0	0	0	0	0	3
11:00	1	1	1	0	1	1	0	0	0	0	0	0	5
<b>Total</b>	<b>13</b>	<b>13</b>	<b>26</b>	<b>124</b>	<b>171</b>	<b>71</b>	<b>22</b>	<b>1</b>	<b>1</b>	<b>1</b>	<b>0</b>	<b>1</b>	<b>448</b>

# Chittenden County RPC

110 W Canal St  
Winooski, VT 05404

Site Code: RICH21  
Station ID:  
Location 1: Kenyon Rd, Richmond VT  
Location 2: On Utility pole, 35 MPH  
Direction: South, A to B

File Name: RICH21\_TRAX  
Date Printed: 6/28/2021  
Start Date: 6/17/2021  
End Date: 6/21/2021

6/19/2021	> 15 - 20	> 20 - 25	> 25 - 30	> 30 - 35	> 35 - 40	> 40 - 45	> 45 - 50	> 50 - 55	> 55 - 60	> 60 - 65	> 65 - 70	> 70 MPH	Total
Time	0 - 15 MPH	MPH	MPH	MPH	MPH	MPH	MPH	MPH	MPH	MPH	MPH	MPH	
12:00 AM	0	0	0	0	1	0	0	0	0	0	0	0	1
1:00	0	0	0	0	0	0	0	0	0	0	0	0	0
2:00	0	0	0	0	0	0	0	0	0	0	0	0	0
3:00	0	0	0	1	0	0	0	0	0	0	0	0	1
4:00	0	0	0	0	0	0	0	0	0	0	0	0	0
5:00	0	0	0	0	1	1	0	0	0	0	0	0	2
6:00	0	0	0	1	4	5	2	0	0	0	0	0	12
7:00	0	0	0	2	6	4	0	0	0	0	0	0	12
8:00	0	1	0	10	5	7	1	0	0	0	0	0	24
9:00	0	0	1	10	10	7	2	0	0	0	0	0	30
10:00	1	0	3	9	8	3	0	1	0	0	0	0	25
11:00	0	0	4	6	9	3	0	1	0	0	0	0	23
12:00 PM	4	0	1	11	11	1	0	0	0	0	0	0	28
1:00	2	0	4	10	12	3	1	1	0	0	0	0	33
2:00	3	0	6	12	12	5	0	1	0	0	0	0	39
3:00	0	2	4	15	9	2	1	0	0	0	0	1	34
4:00	2	0	3	6	5	1	1	0	1	0	0	0	20
5:00	2	4	3	4	11	2	0	1	0	1	0	0	28
6:00	0	0	3	10	3	2	1	0	0	0	0	0	19
7:00	0	0	2	6	3	3	0	0	0	0	0	0	14
8:00	0	0	1	4	5	3	1	0	0	0	0	0	14
9:00	0	0	1	4	2	1	0	0	0	0	0	0	8
10:00	0	0	0	2	3	1	1	0	0	0	0	0	7
11:00	0	0	0	1	0	0	0	0	0	0	0	0	1
<b>Total</b>	<b>14</b>	<b>7</b>	<b>36</b>	<b>124</b>	<b>120</b>	<b>54</b>	<b>11</b>	<b>5</b>	<b>1</b>	<b>1</b>	<b>1</b>	<b>0</b>	<b>375</b>

# Chittenden County RPC

110 W Canal St  
Winooski, VT 05404

Site Code: RICH21  
Station ID:  
Location 1: Kenyon Rd, Richmond VT  
Location 2: On Utility pole, 35 MPH  
Direction: South, A to B

File Name: RICH21\_TRAX  
Date Printed: 6/28/2021  
Start Date: 6/17/2021  
End Date: 6/21/2021

6/20/2021	> 15 - 20	> 20 - 25	> 25 - 30	> 30 - 35	> 35 - 40	> 40 - 45	> 45 - 50	> 50 - 55	> 55 - 60	> 60 - 65	> 65 - 70	> 70 MPH	Total
Time	0 - 15 MPH	MPH	MPH	MPH	MPH	MPH	MPH	MPH	MPH	MPH	MPH	MPH	
12:00 AM	0	0	0	1	1	0	0	1	0	0	0	0	3
1:00	0	0	0	0	0	1	0	0	0	0	0	0	1
2:00	0	0	0	0	0	0	0	0	0	0	0	0	0
3:00	0	0	0	1	1	0	0	0	0	0	0	0	2
4:00	0	0	0	0	0	0	0	0	0	0	0	0	0
5:00	0	0	0	0	2	0	0	0	0	0	0	0	2
6:00	0	0	0	0	6	1	1	0	0	0	0	0	8
7:00	1	0	0	4	3	2	0	1	0	0	0	0	11
8:00	0	0	0	5	10	1	0	0	0	0	0	0	16
9:00	0	1	5	5	7	1	0	0	0	0	0	0	19
10:00	2	0	2	17	7	2	0	0	0	0	0	0	30
11:00	1	0	4	15	7	1	0	0	0	0	0	0	28
12:00 PM	0	1	2	16	9	2	0	0	0	0	0	0	30
1:00	0	0	1	12	10	3	2	0	1	0	0	1	30
2:00	1	2	0	14	10	3	0	0	0	0	0	0	30
3:00	2	1	3	10	6	4	1	2	0	0	0	0	29
4:00	0	1	0	11	9	5	0	0	0	0	0	0	26
5:00	1	0	1	8	14	3	1	0	0	0	0	0	28
6:00	1	0	4	2	5	3	2	1	0	0	0	0	18
7:00	1	0	2	2	7	1	0	0	0	0	0	0	13
8:00	0	1	4	7	3	2	0	0	0	0	0	0	17
9:00	0	0	0	6	3	2	0	0	0	0	0	0	11
10:00	0	0	0	2	0	0	0	0	0	0	0	0	2
11:00	0	0	0	0	1	0	0	0	0	0	0	0	1
<b>Total</b>	<b>10</b>	<b>7</b>	<b>28</b>	<b>138</b>	<b>121</b>	<b>37</b>	<b>7</b>	<b>5</b>	<b>1</b>	<b>0</b>	<b>0</b>	<b>0</b>	<b>355</b>

# Chittenden County RPC

110 W Canal St  
Winooski, VT 05404

Site Code: RICH21  
Station ID:  
Location 1: Kenyon Rd, Richmond VT  
Location 2: On Utility pole, 35 MPH  
Direction: South, A to B

File Name: RICH21\_TRAX  
Date Printed: 6/28/2021  
Start Date: 6/17/2021  
End Date: 6/21/2021

6/21/2021	> 15 - 20	> 20 - 25	> 25 - 30	> 30 - 35	> 35 - 40	> 40 - 45	> 45 - 50	> 50 - 55	> 55 - 60	> 60 - 65	> 65 - 70	> 70 MPH	Total
Time	0 - 15 MPH	MPH	MPH	MPH	MPH	MPH	MPH	MPH	MPH	MPH	MPH	MPH	
12:00 AM	0	0	0	0	0	0	0	0	0	0	0	0	0
1:00	0	0	0	0	0	0	0	0	0	0	0	0	0
2:00	0	0	0	1	0	0	0	0	0	0	0	0	1
3:00	0	0	0	0	1	0	0	0	0	0	0	0	1
4:00	0	0	0	0	0	0	0	0	0	0	0	0	0
5:00	0	0	0	2	2	2	0	1	0	0	0	0	7
6:00	0	0	1	6	12	4	2	0	0	0	0	0	25
7:00	1	0	3	9	14	2	0	0	0	0	0	0	29
8:00	0	1	4	14	12	4	1	0	0	0	0	0	36
9:00	0	0	1	9	9	3	0	0	0	0	0	0	22
10:00	0	0	8	11	6	4	0	0	0	0	0	0	29
11:00	1	1	3	9	7	2	1	0	0	0	0	0	24
12:00 PM	0	0	3	7	4	1	0	0	0	0	0	0	15
1:00	0	0	0	0	0	0	0	0	0	0	0	0	0
2:00	*	*	*	*	*	*	*	*	*	*	*	*	0
3:00	*	*	*	*	*	*	*	*	*	*	*	*	0
4:00	*	*	*	*	*	*	*	*	*	*	*	*	0
5:00	*	*	*	*	*	*	*	*	*	*	*	*	0
6:00	*	*	*	*	*	*	*	*	*	*	*	*	0
7:00	*	*	*	*	*	*	*	*	*	*	*	*	0
8:00	*	*	*	*	*	*	*	*	*	*	*	*	0
9:00	*	*	*	*	*	*	*	*	*	*	*	*	0
10:00	*	*	*	*	*	*	*	*	*	*	*	*	0
11:00	*	*	*	*	*	*	*	*	*	*	*	*	0
<b>Total</b>	<b>2</b>	<b>2</b>	<b>23</b>	<b>68</b>	<b>67</b>	<b>22</b>	<b>4</b>	<b>1</b>	<b>0</b>	<b>0</b>	<b>0</b>	<b>0</b>	<b>189</b>
<b>Grand Total</b>	<b>47</b>	<b>30</b>	<b>125</b>	<b>493</b>	<b>549</b>	<b>205</b>	<b>52</b>	<b>13</b>	<b>3</b>	<b>2</b>	<b>1</b>	<b>3</b>	<b>1534</b>

Stats	Percentile	15th	50th	85th	95th
Speed		31.2	36.5	40.2	
Mean Speed (Average)		32.0			
10 MPH Pace Speed		27-36			
Number in Pace		1089			
Percent in Pace		69.0%			
Number > 35 MPH		290			
Percent > 35 MPH		19.5%			



# Chittenden County RPC

110 W Canal St  
Winooski, VT 05404

Site Code: RICH21  
Station ID:  
Location 1: Kenyon Rd, Richmond VT  
Location 2: On Utility pole, 35 MPH  
Direction: North, B to A

File Name: RICH21\_TRAX  
Date Printed: 6/28/2021  
Start Date: 6/17/2021  
End Date: 6/21/2021

6/17/2021	> 15 - 20	> 20 - 25	> 25 - 30	> 30 - 35	> 35 - 40	> 40 - 45	> 45 - 50	> 50 - 55	> 55 - 60	> 60 - 65	> 65 - 70	> 70 MPH	Total
Time	0 - 15 MPH	MPH	MPH	MPH	MPH	MPH	MPH	MPH	MPH	MPH	MPH	MPH	
12:00 AM	*	*	*	*	*	*	*	*	*	*	*	*	0
1:00	*	*	*	*	*	*	*	*	*	*	*	*	0
2:00	*	*	*	*	*	*	*	*	*	*	*	*	0
3:00	*	*	*	*	*	*	*	*	*	*	*	*	0
4:00	*	*	*	*	*	*	*	*	*	*	*	*	0
5:00	*	*	*	*	*	*	*	*	*	*	*	*	0
6:00	*	*	*	*	*	*	*	*	*	*	*	*	0
7:00	*	*	*	*	*	*	*	*	*	*	*	*	0
8:00	*	*	*	*	*	*	*	*	*	*	*	*	0
9:00	*	*	*	*	*	*	*	*	*	*	*	*	0
10:00	*	*	*	*	*	*	*	*	*	*	*	*	0
11:00	*	*	*	*	*	*	*	*	*	*	*	*	0
12:00 PM	*	*	*	*	*	*	*	*	*	*	*	*	0
1:00	*	*	*	*	*	*	*	*	*	*	*	*	0
2:00	*	*	*	*	*	*	*	*	*	*	*	*	0
3:00	1	0	2	6	8	4	3	1	0	0	0	0	25
4:00	1	0	2	7	9	8	3	0	0	0	0	0	30
5:00	0	2	2	6	12	12	0	1	0	0	0	0	35
6:00	0	0	1	2	9	4	1	0	0	1	0	0	18
7:00	4	2	2	3	2	1	1	0	1	1	0	0	20
8:00	2	1	3	1	1	1	0	0	0	0	0	0	9
9:00	3	2	2	5	2	0	0	1	0	0	0	0	15
10:00	2	1	1	0	0	5	0	0	0	0	0	0	9
11:00	1	1	1	2	1	3	0	0	0	0	0	0	9
<b>Total</b>	<b>14</b>	<b>9</b>	<b>16</b>	<b>32</b>	<b>44</b>	<b>38</b>	<b>8</b>	<b>3</b>	<b>1</b>	<b>2</b>	<b>0</b>	<b>0</b>	<b>170</b>



# Chittenden County RPC

110 W Canal St  
Winooski, VT 05404

Site Code: RICH21  
Station ID:  
Location 1: Kenyon Rd, Richmond VT  
Location 2: On Utility pole, 35 MPH  
Direction: North, B to A

File Name: RICH21\_TRAX  
Date Printed: 6/28/2021  
Start Date: 6/17/2021  
End Date: 6/21/2021

6/19/2021	> 15 - 20	> 20 - 25	> 25 - 30	> 30 - 35	> 35 - 40	> 40 - 45	> 45 - 50	> 50 - 55	> 55 - 60	> 60 - 65	> 65 - 70	> 70 MPH	Total
Time	0 - 15 MPH	MPH	MPH	MPH	MPH	MPH	MPH	MPH	MPH	MPH	MPH	MPH	
12:00 AM	0	0	0	0	0	1	0	0	0	0	0	0	1
1:00	0	0	0	0	0	0	1	0	0	0	0	0	1
2:00	0	0	0	0	0	0	0	0	0	0	0	0	0
3:00	0	0	0	0	0	0	0	0	0	0	0	0	0
4:00	0	0	0	0	0	2	0	0	0	0	0	0	2
5:00	0	0	0	0	0	0	0	0	0	0	0	0	0
6:00	0	1	0	1	1	2	0	0	0	0	0	0	5
7:00	0	0	0	1	0	2	0	0	0	0	0	0	3
8:00	0	0	2	5	3	3	2	1	0	0	0	0	16
9:00	0	0	1	5	7	5	1	0	0	0	0	0	19
10:00	1	0	3	4	9	11	1	0	0	0	0	0	29
11:00	2	0	5	10	15	9	2	0	0	0	0	0	43
12:00 PM	0	1	4	12	7	7	0	0	0	0	0	1	32
1:00	1	1	3	6	10	7	1	1	1	0	0	0	31
2:00	0	0	2	5	5	5	0	0	0	0	0	0	17
3:00	1	1	3	7	7	7	1	0	0	1	0	0	28
4:00	3	0	3	6	8	5	0	0	0	0	0	0	25
5:00	2	2	4	4	4	4	2	0	0	0	0	0	22
6:00	0	0	1	10	6	6	1	0	0	0	0	0	24
7:00	0	1	1	4	8	3	1	0	0	0	0	0	18
8:00	0	0	0	0	7	2	1	0	0	0	0	0	10
9:00	0	0	1	0	9	2	1	0	0	0	0	0	13
10:00	0	0	0	3	5	3	2	0	0	0	0	0	13
11:00	0	0	0	4	1	3	0	0	0	0	0	0	8
<b>Total</b>	<b>10</b>	<b>7</b>	<b>33</b>	<b>87</b>	<b>112</b>	<b>89</b>	<b>17</b>	<b>2</b>	<b>1</b>	<b>0</b>	<b>1</b>	<b>0</b>	<b>360</b>

# Chittenden County RPC

110 W Canal St  
Winooski, VT 05404

Site Code: RICH21  
Station ID:  
Location 1: Kenyon Rd, Richmond VT  
Location 2: On Utility pole, 35 MPH  
Direction: North, B to A

File Name: RICH21\_TRAX  
Date Printed: 6/28/2021  
Start Date: 6/17/2021  
End Date: 6/21/2021

6/20/2021	> 15 - 20	> 20 - 25	> 25 - 30	> 30 - 35	> 35 - 40	> 40 - 45	> 45 - 50	> 50 - 55	> 55 - 60	> 60 - 65	> 65 - 70	> 70 MPH	Total
Time	0 - 15 MPH	MPH	MPH	MPH	MPH	MPH	MPH	MPH	MPH	MPH	MPH	MPH	
12:00 AM	0	0	0	1	2	1	0	0	0	0	0	0	4
1:00	0	0	0	0	0	0	0	0	0	0	0	0	0
2:00	0	0	0	0	1	0	0	0	0	0	0	0	1
3:00	0	0	0	0	0	0	0	0	0	0	0	0	0
4:00	0	0	0	0	0	0	0	0	0	0	0	0	0
5:00	0	0	0	0	0	0	0	0	0	0	0	0	0
6:00	0	0	0	0	1	0	1	0	0	0	0	0	2
7:00	0	0	0	2	2	2	1	0	0	0	0	0	7
8:00	0	2	0	3	2	2	1	0	0	0	0	0	10
9:00	1	0	3	2	7	2	0	0	0	0	0	0	15
10:00	0	0	0	8	15	6	1	0	0	0	0	0	30
11:00	0	1	4	7	14	8	0	0	0	0	0	0	34
12:00 PM	1	0	3	4	15	2	0	0	0	0	0	0	25
1:00	0	0	2	0	9	3	3	0	0	0	0	0	17
2:00	0	4	3	10	16	2	0	0	0	0	0	0	35
3:00	0	1	2	14	12	4	1	0	0	0	0	0	34
4:00	0	1	1	8	12	5	1	0	1	0	0	0	29
5:00	0	2	2	4	15	2	0	0	0	0	0	0	25
6:00	1	0	0	4	6	4	1	1	0	0	0	0	17
7:00	0	1	2	5	11	4	0	0	0	0	0	0	23
8:00	1	1	4	5	15	4	0	0	0	0	0	0	30
9:00	0	0	2	4	9	2	1	0	0	0	0	0	18
10:00	0	0	0	0	3	1	0	1	0	0	0	0	5
11:00	0	0	0	0	0	0	0	0	0	0	0	0	0
<b>Total</b>	<b>4</b>	<b>13</b>	<b>28</b>	<b>81</b>	<b>167</b>	<b>54</b>	<b>11</b>	<b>2</b>	<b>1</b>	<b>0</b>	<b>0</b>	<b>0</b>	<b>361</b>

# Chittenden County RPC

110 W Canal St  
Winooski, VT 05404

Site Code: RICH21  
Station ID:  
Location 1: Kenyon Rd, Richmond VT  
Location 2: On Utility pole, 35 MPH  
Direction: North, B to A

File Name: RICH21\_TRAX  
Date Printed: 6/28/2021  
Start Date: 6/17/2021  
End Date: 6/21/2021

6/21/2021	> 15 - 20	> 20 - 25	> 25 - 30	> 30 - 35	> 35 - 40	> 40 - 45	> 45 - 50	> 50 - 55	> 55 - 60	> 60 - 65	> 65 - 70	> 70 MPH	Total
Time	0 - 15 MPH	MPH	MPH	MPH	MPH	MPH	MPH	MPH	MPH	MPH	MPH	MPH	
12:00 AM	0	0	0	0	0	2	0	0	0	0	0	0	2
1:00	0	0	0	1	1	1	0	0	0	0	0	0	3
2:00	0	0	0	0	0	0	0	0	0	0	0	0	0
3:00	0	0	0	0	0	0	0	0	0	0	0	0	0
4:00	0	0	0	0	0	1	0	0	0	0	0	0	1
5:00	0	0	0	1	0	1	1	0	0	0	0	0	3
6:00	0	0	0	1	5	3	1	0	0	0	0	0	10
7:00	0	0	0	4	5	5	1	0	0	0	0	0	15
8:00	0	0	2	4	7	5	1	0	0	0	0	0	19
9:00	0	0	0	4	12	5	0	0	0	0	0	0	21
10:00	0	1	1	2	5	3	0	0	1	0	0	0	13
11:00	1	0	1	4	7	3	1	0	0	0	0	0	17
12:00 PM	1	0	2	7	12	4	0	0	0	0	0	0	26
1:00	0	0	0	0	0	0	0	0	0	0	0	0	0
2:00	*	*	*	*	*	*	*	*	*	*	*	*	0
3:00	*	*	*	*	*	*	*	*	*	*	*	*	0
4:00	*	*	*	*	*	*	*	*	*	*	*	*	0
5:00	*	*	*	*	*	*	*	*	*	*	*	*	0
6:00	*	*	*	*	*	*	*	*	*	*	*	*	0
7:00	*	*	*	*	*	*	*	*	*	*	*	*	0
8:00	*	*	*	*	*	*	*	*	*	*	*	*	0
9:00	*	*	*	*	*	*	*	*	*	*	*	*	0
10:00	*	*	*	*	*	*	*	*	*	*	*	*	0
11:00	*	*	*	*	*	*	*	*	*	*	*	*	0
<b>Total</b>	<b>2</b>	<b>1</b>	<b>6</b>	<b>28</b>	<b>54</b>	<b>33</b>	<b>5</b>	<b>0</b>	<b>1</b>	<b>0</b>	<b>0</b>	<b>0</b>	<b>130</b>
<b>Grand Total</b>	<b>40</b>	<b>38</b>	<b>103</b>	<b>287</b>	<b>517</b>	<b>326</b>	<b>69</b>	<b>7</b>	<b>4</b>	<b>2</b>	<b>1</b>	<b>0</b>	<b>1399</b>

Stats	Percentile	15th	50th	85th	95th
Speed		31.2	36.5	40.2	
Mean Speed (Average)		32.7			
10 MPH Pace Speed		28-37			
Number in Pace		930			
Percent in Pace		64.0%			
Number > 35 MPH		414			
Percent > 35 MPH		30.5%			

# Chittenden County RPC

110 W Canal St  
Winooski, VT 05404

Site Code: RICH21  
Station ID:  
Location 1: Kenyon Rd, Richmond VT  
Location 2: On Utility pole, 35 MPH  
Direction: Combined

File Name: RICH21\_TRAX  
Date Printed: 6/28/2021  
Start Date: 6/17/2021  
End Date: 6/21/2021

6/17/2021	> 15 - 20	> 20 - 25	> 25 - 30	> 30 - 35	> 35 - 40	> 40 - 45	> 45 - 50	> 50 - 55	> 55 - 60	> 60 - 65	> 65 - 70	> 70 MPH	Total
Time	0 - 15 MPH	MPH	MPH	MPH	MPH	MPH	MPH	MPH	MPH	MPH	MPH	MPH	
12:00 AM	*	*	*	*	*	*	*	*	*	*	*	*	0
1:00	*	*	*	*	*	*	*	*	*	*	*	*	0
2:00	*	*	*	*	*	*	*	*	*	*	*	*	0
3:00	*	*	*	*	*	*	*	*	*	*	*	*	0
4:00	*	*	*	*	*	*	*	*	*	*	*	*	0
5:00	*	*	*	*	*	*	*	*	*	*	*	*	0
6:00	*	*	*	*	*	*	*	*	*	*	*	*	0
7:00	*	*	*	*	*	*	*	*	*	*	*	*	0
8:00	*	*	*	*	*	*	*	*	*	*	*	*	0
9:00	*	*	*	*	*	*	*	*	*	*	*	*	0
10:00	*	*	*	*	*	*	*	*	*	*	*	*	0
11:00	*	*	*	*	*	*	*	*	*	*	*	*	0
12:00 PM	*	*	*	*	*	*	*	*	*	*	*	*	0
1:00	*	*	*	*	*	*	*	*	*	*	*	*	0
2:00	*	*	*	*	*	*	*	*	*	*	*	*	0
3:00	2	0	6	8	20	11	7	1	0	0	0	0	55
4:00	3	0	3	19	23	11	3	0	0	0	0	0	64
5:00	2	3	2	16	34	18	1	1	0	0	0	0	79
6:00	0	0	2	7	18	8	1	0	0	1	0	0	37
7:00	4	2	3	7	7	1	2	0	1	1	0	1	33
8:00	4	1	6	5	4	1	0	0	0	0	0	1	22
9:00	4	2	4	6	3	1	1	1	0	0	0	0	22
10:00	2	1	1	0	3	5	1	0	0	0	0	0	13
11:00	1	1	1	3	2	3	0	1	0	0	0	0	12
<b>Total</b>	<b>22</b>	<b>10</b>	<b>28</b>	<b>71</b>	<b>114</b>	<b>59</b>	<b>16</b>	<b>4</b>	<b>1</b>	<b>2</b>	<b>0</b>	<b>2</b>	<b>337</b>

# Chittenden County RPC

110 W Canal St  
Winooski, VT 05404

Site Code: RICH21  
Station ID:  
Location 1: Kenyon Rd, Richmond VT  
Location 2: On Utility pole, 35 MPH  
Direction: Combined

File Name: RICH21\_TRAX  
Date Printed: 6/28/2021  
Start Date: 6/17/2021  
End Date: 6/21/2021

6/18/2021	> 15 - 20	> 20 - 25	> 25 - 30	> 30 - 35	> 35 - 40	> 40 - 45	> 45 - 50	> 50 - 55	> 55 - 60	> 60 - 65	> 65 - 70	> 70 MPH	Total
Time	0 - 15 MPH	MPH	MPH	MPH	MPH	MPH	MPH	MPH	MPH	MPH	MPH	MPH	
12:00 AM	0	0	1	0	0	0	0	0	0	0	0	0	1
1:00	0	0	0	0	0	0	0	0	0	0	0	0	0
2:00	0	0	0	0	0	0	0	0	0	0	0	0	0
3:00	0	0	0	0	1	0	0	0	0	0	0	0	1
4:00	0	0	0	0	0	1	0	0	0	0	0	0	1
5:00	0	0	0	3	4	3	1	0	0	0	0	0	11
6:00	1	0	0	3	8	10	2	0	0	0	0	0	24
7:00	3	0	2	6	20	14	10	0	0	0	0	0	55
8:00	2	0	1	10	21	8	2	0	0	0	0	0	44
9:00	2	0	1	5	20	14	4	0	0	0	0	0	46
10:00	0	0	4	16	13	8	2	0	0	0	0	0	43
11:00	0	1	0	9	22	8	0	1	0	0	0	0	41
12:00 PM	2	1	6	14	23	13	1	0	0	0	0	0	60
1:00	1	2	4	16	22	14	0	0	0	0	0	0	59
2:00	2	2	3	16	18	6	4	0	0	0	0	0	52
3:00	0	5	3	19	27	10	5	0	0	1	0	2	72
4:00	5	6	9	15	28	10	2	0	1	0	0	1	78
5:00	1	3	3	14	23	14	4	0	0	0	0	0	62
6:00	0	0	3	8	22	19	4	0	0	0	0	0	56
7:00	0	0	1	4	14	15	4	0	0	0	0	0	38
8:00	1	0	2	9	7	8	2	0	0	0	0	0	29
9:00	1	0	2	11	10	3	1	0	0	0	0	0	29
10:00	0	0	0	4	3	2	1	0	0	0	0	0	10
11:00	2	1	1	1	5	3	1	0	0	0	0	0	14
<b>Total</b>	<b>23</b>	<b>21</b>	<b>46</b>	<b>183</b>	<b>311</b>	<b>183</b>	<b>50</b>	<b>1</b>	<b>1</b>	<b>1</b>	<b>0</b>	<b>1</b>	<b>826</b>

# Chittenden County RPC

110 W Canal St  
Winooski, VT 05404

Site Code: RICH21  
Station ID:  
Location 1: Kenyon Rd, Richmond VT  
Location 2: On Utility pole, 35 MPH  
Direction: Combined

File Name: RICH21\_TRAX  
Date Printed: 6/28/2021  
Start Date: 6/17/2021  
End Date: 6/21/2021

6/19/2021	> 15 - 20	> 20 - 25	> 25 - 30	> 30 - 35	> 35 - 40	> 40 - 45	> 45 - 50	> 50 - 55	> 55 - 60	> 60 - 65	> 65 - 70	> 70 MPH	Total
Time	0 - 15 MPH	MPH	MPH	MPH	MPH	MPH	MPH	MPH	MPH	MPH	MPH	MPH	
12:00 AM	0	0	0	0	1	1	0	0	0	0	0	0	2
1:00	0	0	0	0	0	0	1	0	0	0	0	0	1
2:00	0	0	0	0	0	0	0	0	0	0	0	0	0
3:00	0	0	0	1	0	0	0	0	0	0	0	0	1
4:00	0	0	0	0	0	2	0	0	0	0	0	0	2
5:00	0	0	0	0	1	1	0	0	0	0	0	0	2
6:00	0	1	0	2	5	7	2	0	0	0	0	0	17
7:00	0	0	0	3	6	6	0	0	0	0	0	0	15
8:00	0	1	2	15	8	10	3	1	0	0	0	0	40
9:00	0	0	2	15	17	12	3	0	0	0	0	0	49
10:00	2	0	6	13	17	14	1	1	0	0	0	0	54
11:00	2	0	9	16	24	12	2	1	0	0	0	0	66
12:00 PM	4	1	5	23	18	8	0	0	0	0	0	1	60
1:00	3	1	7	16	22	10	2	2	1	0	0	0	64
2:00	3	0	8	17	17	10	0	1	0	0	0	0	56
3:00	1	3	7	22	16	9	2	0	0	1	0	1	62
4:00	5	0	6	12	13	6	1	1	0	1	0	0	45
5:00	4	6	7	8	15	6	2	0	1	0	1	0	50
6:00	0	0	4	20	9	8	2	0	0	0	0	0	43
7:00	0	1	3	10	11	6	1	0	0	0	0	0	32
8:00	0	0	1	4	12	5	2	0	0	0	0	0	24
9:00	0	0	2	4	11	3	1	0	0	0	0	0	21
10:00	0	0	0	5	8	4	3	0	0	0	0	0	20
11:00	0	0	0	5	1	3	0	0	0	0	0	0	9
<b>Total</b>	<b>24</b>	<b>14</b>	<b>69</b>	<b>211</b>	<b>232</b>	<b>143</b>	<b>28</b>	<b>7</b>	<b>2</b>	<b>1</b>	<b>2</b>	<b>0</b>	<b>735</b>



# Chittenden County RPC

110 W Canal St  
Winooski, VT 05404

Site Code: RICH21  
Station ID:  
Location 1: Kenyon Rd, Richmond VT  
Location 2: On Utility pole, 35 MPH  
Direction: Combined

File Name: RICH21\_TRAX  
Date Printed: 6/28/2021  
Start Date: 6/17/2021  
End Date: 6/21/2021

6/20/2021	> 15 - 20	> 20 - 25	> 25 - 30	> 30 - 35	> 35 - 40	> 40 - 45	> 45 - 50	> 50 - 55	> 55 - 60	> 60 - 65	> 65 - 70	> 70 MPH	Total
Time	0 - 15 MPH	MPH	MPH	MPH	MPH	MPH	MPH	MPH	MPH	MPH	MPH	MPH	
12:00 AM	0	0	0	2	3	1	0	1	0	0	0	0	7
1:00	0	0	0	0	0	1	0	0	0	0	0	0	1
2:00	0	0	0	0	1	0	0	0	0	0	0	0	1
3:00	0	0	0	1	1	0	0	0	0	0	0	0	2
4:00	0	0	0	0	0	0	0	0	0	0	0	0	0
5:00	0	0	0	0	2	0	0	0	0	0	0	0	2
6:00	0	0	0	0	7	1	2	0	0	0	0	0	10
7:00	1	0	0	6	5	4	1	1	0	0	0	0	18
8:00	0	2	0	8	12	3	1	0	0	0	0	0	26
9:00	1	1	8	7	14	3	0	0	0	0	0	0	34
10:00	2	0	2	25	22	8	1	0	0	0	0	0	60
11:00	1	1	8	22	21	9	0	0	0	0	0	0	62
12:00 PM	1	1	5	20	24	4	0	0	0	0	0	0	55
1:00	0	0	3	12	19	6	5	0	1	0	0	1	47
2:00	1	6	3	24	26	5	0	0	0	0	0	0	65
3:00	2	2	5	24	18	8	2	2	0	0	0	0	63
4:00	0	2	1	19	21	10	1	0	1	0	0	0	55
5:00	1	2	3	12	29	5	1	0	0	0	0	0	53
6:00	2	0	4	6	11	7	3	2	0	0	0	0	35
7:00	1	1	4	7	18	5	0	0	0	0	0	0	36
8:00	1	2	8	12	18	6	0	0	0	0	0	0	47
9:00	0	0	2	10	12	4	1	0	0	0	0	0	29
10:00	0	0	0	2	3	1	0	1	0	0	0	0	7
11:00	0	0	0	0	1	0	0	0	0	0	0	0	1
Total	14	20	56	219	288	91	18	7	2	0	0	0	716



**Ball-Banking Data Sheet**

---

