

# Vermont Conservation Design

Andrews  
Community Forest

## Vermont Conservation Design

### The Forest at Landscape Scale


#### **Identifies and ranks features needed to:**

- Maintain an ecologically functional landscape
- Conserve current biological diversity
- Allow species movement in response to climate and land-use changes
- Show locations of highest priority
- Inform better development and conservation decision-making

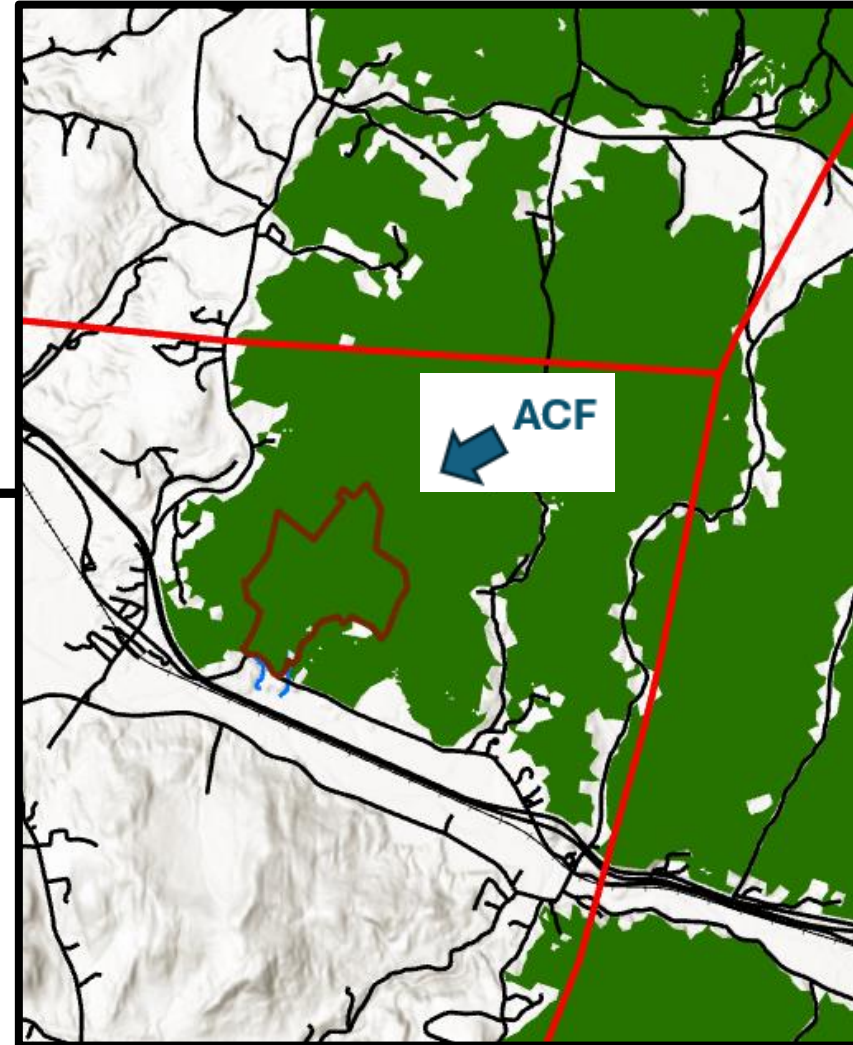
[More information:](http://www.anr.vermont.gov/node/1182) [www.anr.vermont.gov/node/1182](http://www.anr.vermont.gov/node/1182)

# Interior Forest Rank: “Highest Priority”

Highest Priority Interior Forest Blocks



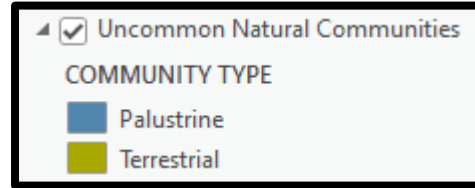
The ACF sits inside the southern end of a Highest Priority Interior Forest Block



**Vermont  
Conservation  
Design**

**Andrews  
Community Forest**

# Uncommon Natural Community Distribution

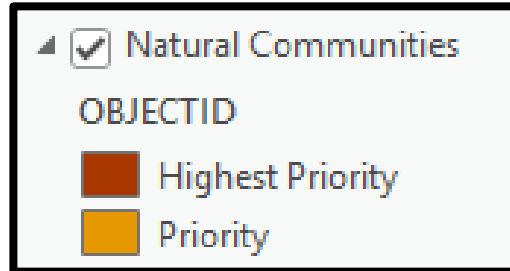


**Within the ACF are large areas composed of Uncommon Natural Communities, particularly in the northern part of the Forest.**

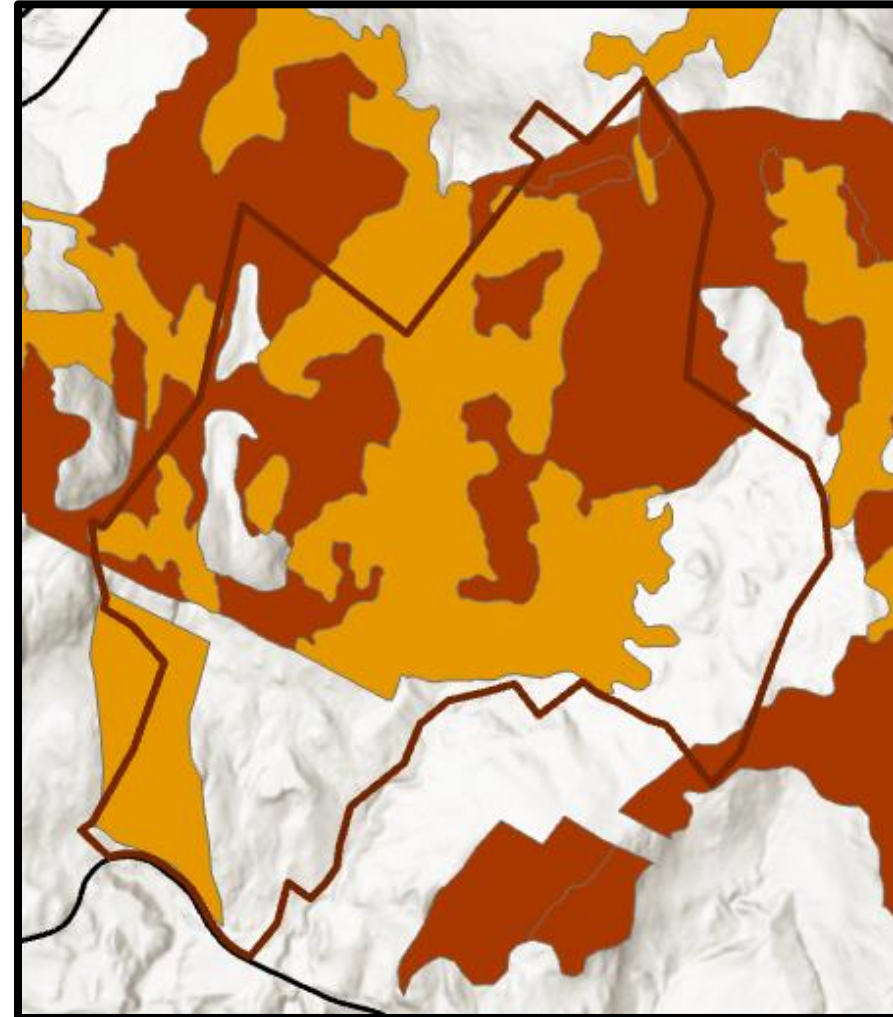
Vermont  
Conservation  
Design

Andrews  
Community Forest

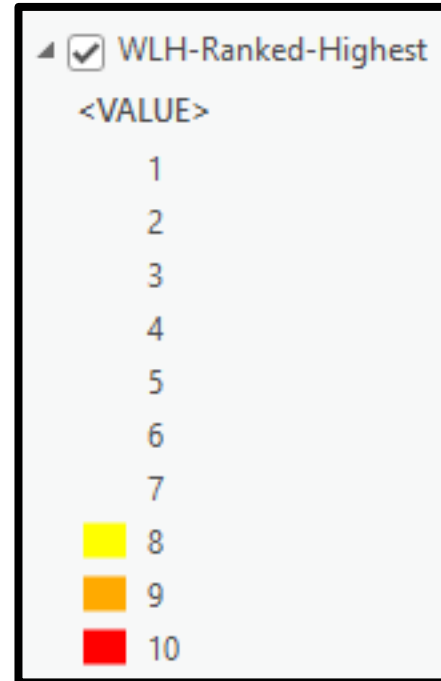
## Natural Communities Rank: “Priority to Highest Priority”



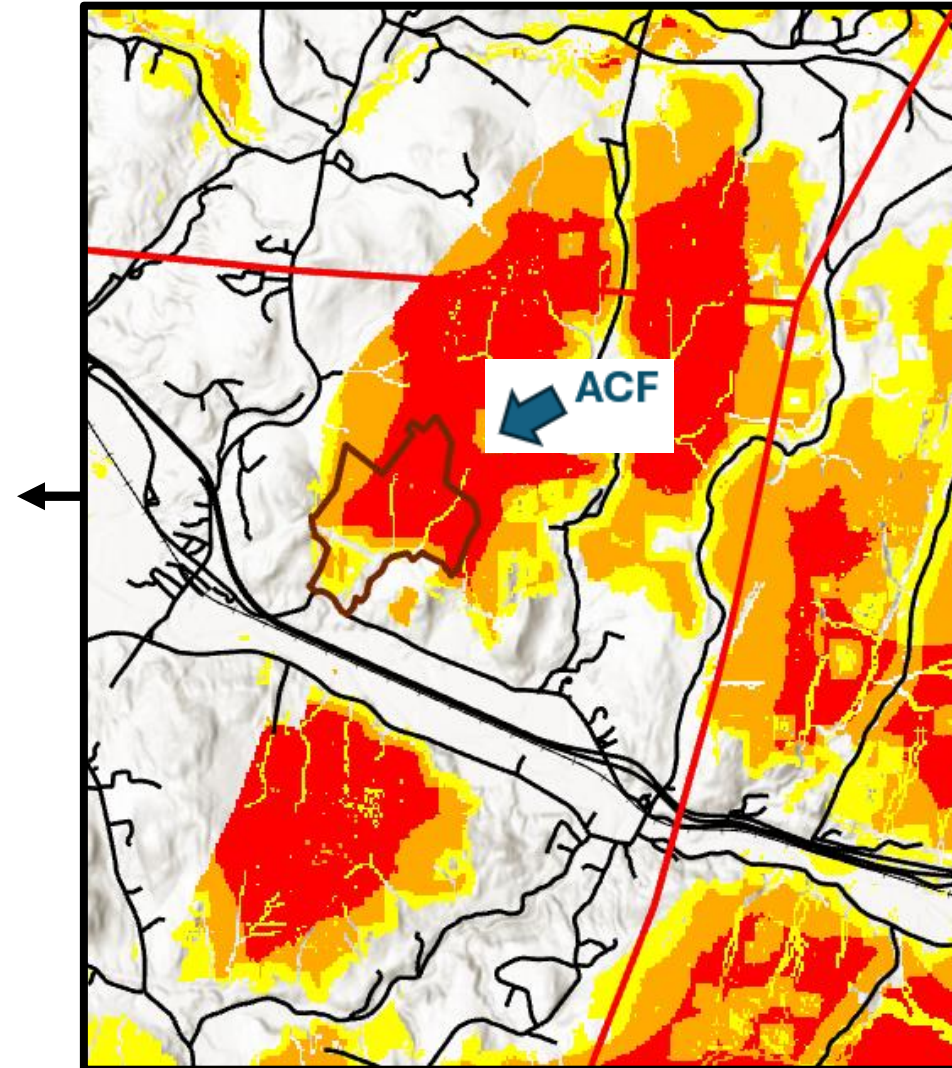
**ANR’s Conservation Design prioritizes these Uncommon Natural Communities as highest, including nearly all of the northern part of the Forest and parts of the southwestern area as well.**



## Wildlife Habitat Rank “High to Highest”



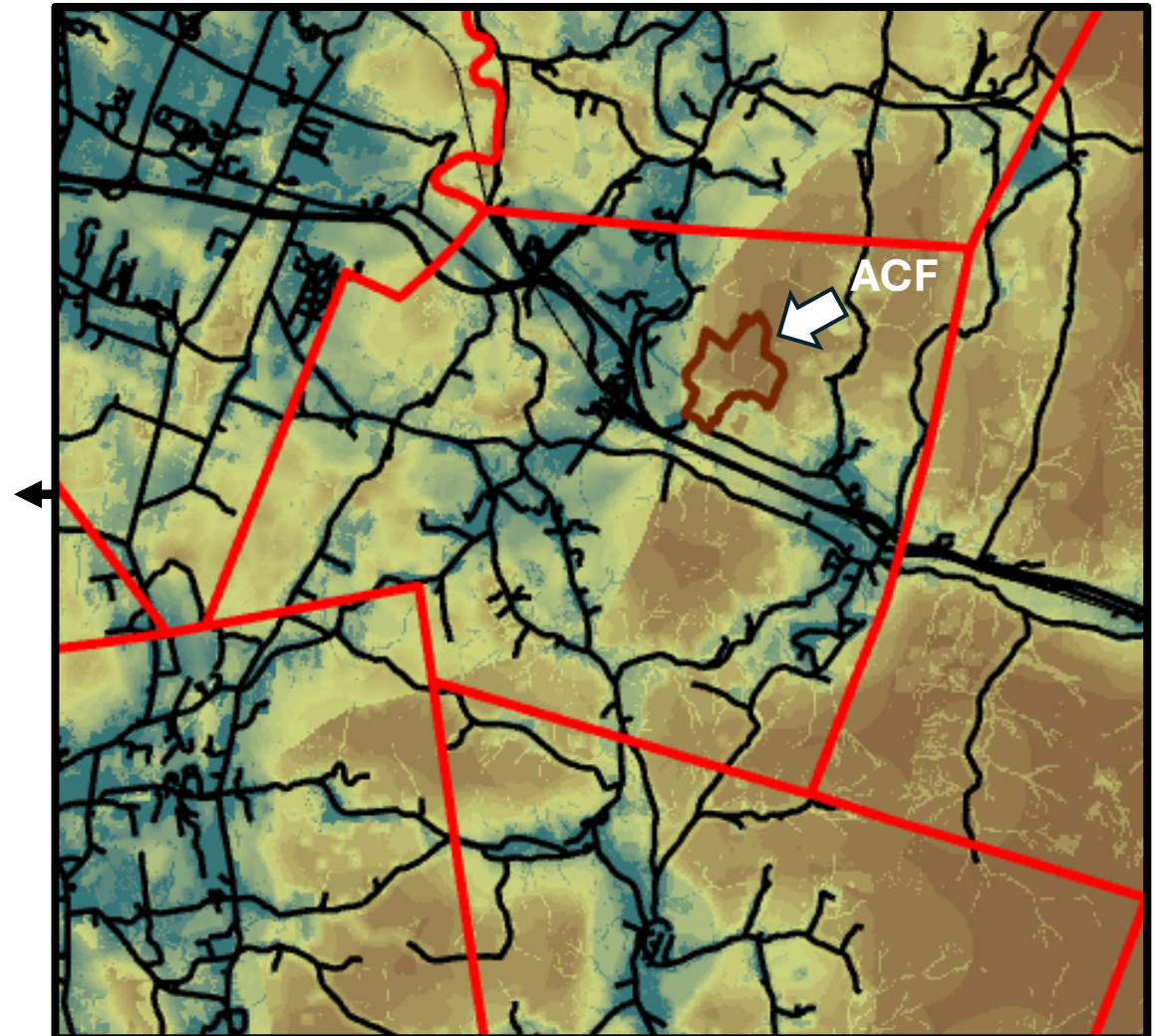
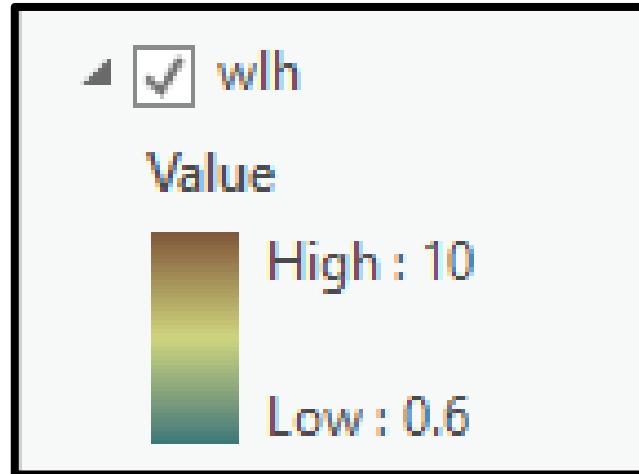
The Forest Block's highest habitat ranking includes the northern part of the ACF.



Vermont  
Conservation  
Design

Andrews  
Community Forest

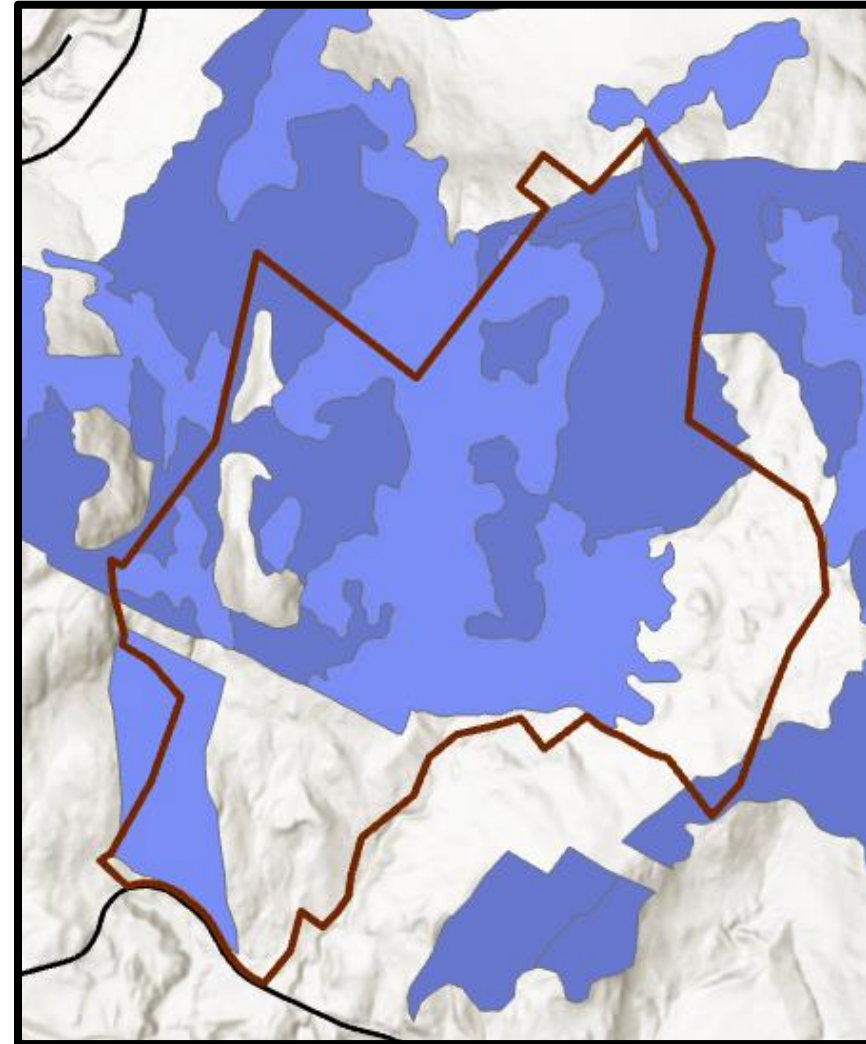
# Wildlife Habitat Rank: "High"



## Wildlife Habitat Rank: “Priority to Highest Priority”



**ANR’s Conservation Design Habitat Priorities closely match those of the natural communities ranking.**



## Habitat Connectivity Rank: "Priority"

▲  Priority Connectivity Blocks



There is a general North-South connectivity corridor. In addition is East-West connectivity into the Champlain Valley.

